



Adam Tas Corridor Energy

Cable trays can be installed at wall height





Cable trays can be installed at wall height



Best Fixing and Mounting Options for Cable Trays , CMW

Regarding cable management, the fixing and mounting you choose for your cable trays can make or break your setup. Whether you're managing voice, data, or electrical cables, ensuring

Cable Tray Width, Dimensions and Specifications as per

Cable Tray Width, Dimensions and Specifications as per NEC Learn about cable tray width dimensions and specifications as per NEC standards. Understand types,



Best Practice Guide to Cable Ladder and Cable Tray Systems

Cable ladders and cable trays should be mounted far enough off the floor or roof to allow the cables to exit through the bottom of the cable ladder or cable tray.

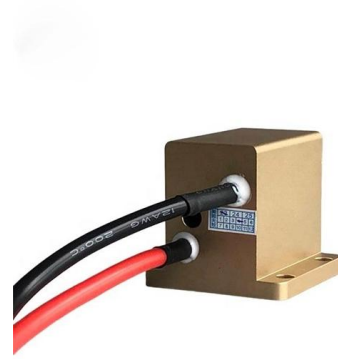


Beama Best Practice Guide , Installation Of The System , Cable

The following recommendations are intended to be a practical guide to ensure the safe and



proper installation of cable ladder and cable tray systems and channel support and other support systems.



CABLE TRAY SYSTEMS GUIDE

Hubbell's NEXTFRAME® Ladder Tray is the effective and widely used cable runway that supports and delivers bundles of cable between cabinets, racks, and closets, along walls, and suspended from



CABLE TRAYS GENERAL INFORMATION AND

In order to install the cable tray supports, first find the required elevation from the floor to the bottom of the cable tray and establish a level line with a laser or a



Technical Guidelines for Cable Tray Installation and

Cable tray installation must comply with specific technical standards to ensure electrical safety, system reliability, and long-term maintainability. This document

Motor protection controller





Precautions for Cable Tray Installation

Cable Tray Installation Guide The correct installation of cable trays is crucial for establishing a reliable and efficient cable system. It ensures that cables are



FAQ , Cable Tray Institute

Question: Is it necessary to provide tie-down cables installed in a cable tray? Answer: Yes; cables are tied down in cable trays to keep the cables in the cable tray, to maintain spacing between cables, or

A Guide to Installing and Supporting Electrical Cable Trays

A professional guide to installing electrical cable tray systems per NEC Article 392. Covers support, securing cables, and fill calculations.



Important design considerations for cable ladder and

Consequently, only cables where mechanical protection is provided by a suitable sheath, for example, PVC sheathing or steel wire armouring, can be



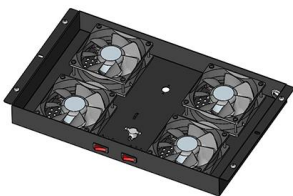
Cable Tray Technical Guide A practical guide to product selection and

Cable tray length is selected based on the load to be supported, the distance between the supports (also referred to as the span), and handling and installation constraints.



B-Line series Cable Tray Design Considerations

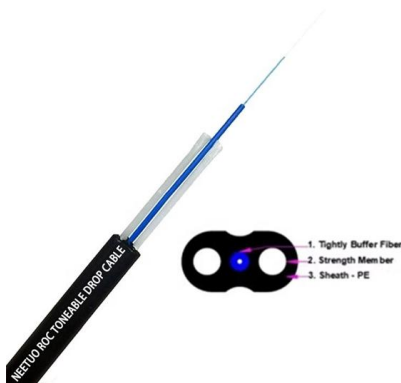
Our wind certification report provides you with list of acceptable B-Line series cable tray supports, fittings and covers based off of the environmental conditions, cable loading, and type of cable tray in your



Best Practice Guide to Cable Ladder and Cable Tray Systems

Cable ladder systems and cable tray systems are designed for use as supports for cables and not as enclosures giving full mechanical protection. They are not intended to be used as ladders, walk ways





GUIDE CABLE TRAYS TECHNICAL

If it has excellent electrical continuity and is integrated in the installation's equipotential bonding system, a metal cable tray reduces the coupling's impact and thus contributes to good EMC of the electrical

Guide to cable support systems

The mesh cable trays are suitable for the installation of power cables and cables in various areas of application. The grid spacings mean that cables can be inserted and run out in various directions.



Best practice guide to cable ladder and cable tray

Cable ladder and cable tray systems The following recommendations are intended to be a practical guide to ensure the safe and proper installation of

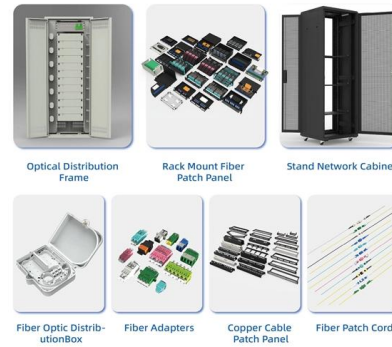


Cable Tray Technical Guide A practical guide to product selection and

A practical guide to product selection and installation This guide for engineers and installers has been developed by ABB as a practical reference regarding cable tray characteristics, installation, and



An Extensive Library of Self-Developed Products



How to install Cable Trays - Best Guide in 2026

In this post, we will see together how to install cable tray on-site. Firstly, we need an approved shop drawing that shows the cable tray route, its dimensions,



A Guide to Installing and Supporting Electrical Cable Trays

This guide covers the critical steps, from selecting the right electrical cable tray and performing accurate cable fill calculations to managing a safe cable pull through



Cable Tray Types and Sizes

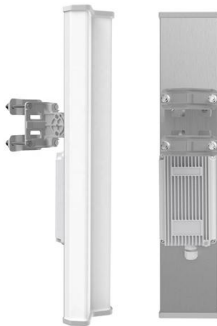
Explore various cable tray types and sizes for electrical installations. Learn about ladder, perforated, solid-bottom, wire mesh, and channel trays in this complete





Cable Tray Capabilities

The EzyStrut range of trays offers you multiple side wall heights to choose from to support different cabling depths: From 20mm perforated bottom CT Tray, through



Cable Tray Dimensions and Specifications as per NEC

Many electrical systems employ cable trays. They route cables safely & efficiently. NEC defines minimum cable tray size & electrical installation

Method Statement installation of Cable Trays and Ladders

This method statement covers the site installation of the cable tray & ladders and the requirements of checks to be carried out.



GENERAL INFORMATION

Cable trays or raceways often provide a convenient, safe and efficient method of fiber optic cable installation. Trays can be installed in ceilings, below floors and in riser shafts. When installing fiber



Guide to cable support systems

The cable support lengths and fittings can basically be designed as cable trays, cable ladders or mesh cable trays, in which cables are routed. Fittings can, on the one hand, be used for horizontal or



Mastering Cable Tray Installation , Step-by-Step Guide for a Seamless

Learn how to install cable trays correctly. Get the ultimate step-by-step guide on setting up a seamless and reliable cable management system.

Cable Tray Systems: Requirements and Best Practices

Comprehensive guide to cable tray systems requirements: tray types, materials, loading, supports, bonding, routing, and best practices for safe electrical cable management.





Contact Us

For datasheets, pricing, or custom telecom energy solutions, please visit:
<https://www.koskolong.co.za>