



**Adam Tas Corridor Energy**

# **Can a 2 5G optical module be used together with a 1 25G optical module**





## Can a 2 5G optical module be used together with a 1 25G optical module

---



### 1.25G SFP Module Application Guide

Need reliable 1.25G SFP module deployment? Learn expert selection, installation, and troubleshooting techniques for optimal network

### Understanding SFP to SFP+ Compatibility: A

Since 10G ports can take 1G modules and yield the same result, it would be more economical to use 1G modules instead of 10G modules. Can



### What Are The Types Of Gigabit Optical Modules

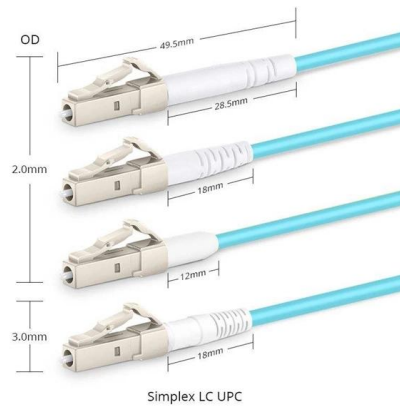
The Gigabit single-mode optical module can be used together with OS2 single-mode optical fiber patch cord, and the maximum transmission distance can reach 160km.

### 1.25G/2.5G SFP DWDM Optical Transceiver Modules , FiberMall

1.25G/2.5G SFP Optical Modules are compatible with the Multi-Source Agreement and SFF-8472



with LC connectors at DWDM wavelengths range from CH17 to CH61.



## 25G SFP28 Transceiver Modules: A Comprehensive Guide

In the realm of high-speed data transmission, 25G SFP28 transceiver modules have emerged as a cornerstone of modern networking infrastructure. These compact, pluggable modules

## 25G SFP28 Transceiver Module - FAQs

The 25G DWDM SFP28 optical module is mainly used to meet the requirements of 5G pretransmission services. The device adopts the EML+APD



## SFP28 25G SR Optical Modules: High-Performance Network Solution

Explore the benefits of SFP28 25G SR optical modules for fast, cost-effective connectivity in data centers, enterprise networks, and 5G. Upgrade your network with FS.



## Understanding the SFP28-25G-SR Transceiver and Its

What is an SFP28-25G-SR Module? The SFP28-25G-SR is a hot-pluggable, compact optical transceiver designed for short-range data communication and



## SFP28 25G SR vs 10/25G SR: Choose the Right

Compare SFP28 25G SR and 10/25G dual-rate modules in speed, compatibility, and use cases to choose the right fit for your evolving network needs.

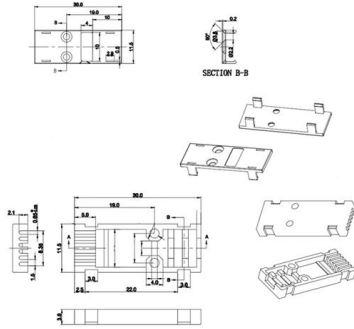
## Classification and basic principles of optical modules

The integrated optical transceiver module is the core device of optical communication, which completes the optical-electrical/electrical-optical conversion of optical signals.



## Exploring the LINK-PP 2.5G SFP Transceiver: Your Ultimate Guide to

2.5G optical modules boost network speed, simplify upgrades, and cut costs with easy installation and broad compatibility for modern networks.



## What Are The Differences Between 25G SFP28 SR and 10/25G Dual

10/25G dual-rate optical modules can be used with 10G SFP+ ports and 25G SFP28 ports, providing flexibility for network upgrades. The 25G SFP28 SR module is only compatible with



## Everything You Need to Know about 25G Optics

The 25G SFP28 optical module is an optical module with a transmission rate of 25Gbps. It is a new Ethernet standard with many

## What is an SFP Optical Module? The Complete Guide to

The complete technical guide to SFP optical modules (SFP, SFP+, SFP28). Understand the core function, compare data rates (1G to 25G), learn





**PRODUCT CATEGORY**

Open rack Series	Space Saving rack	12U Space Saving rack	18" Deepen Wall rack	Adjustable Depth Open rack
Wall mount rack Series	Glass door wall mount rack	Mesh door wall mount rack	Double door wall mount rack	Compact low wall mount rack
Floor standing server rack	Glass door with casters	Mesh door with casters	42U Standard Server rack	Double door 42U Server rack
Outdoor cabinet	A/C conditioner Outdoor cabinet	Outdoor cabinet with panel	Outdoor cabinet with fan cooling	Double Wall Outdoor cabinet
Splitter series	Bare Fiber Splitters	Blackless Fiber Splitters	ABS Splitter	Plastic Splitters
Splitter series	LCR Splitters	Back Mount Splitters	Mini Plug-in Type Splitter	Tray Splitters
Patch cord series	LC	SC	FC	LC
FTTH product series				

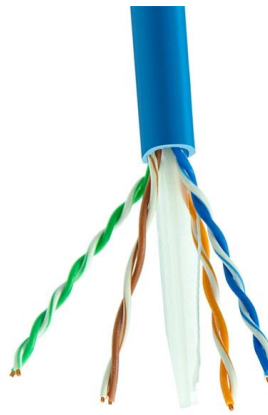
<http://www.hiptec-ensilitec.com>

## 6COM 25G Transceivers and Cables FAQs

A: 6COM provides 25G optical modules and high-speed cable products that comply with IEEE standards, including standard 25G SFP28 (include SR, LR, LH, ER,

## 25G SFP28 Transceiver Module Types and Applications

25G CWDM SFP28 transceiver is a single mode CWDM transceiver for duplex optical data communications at a nominal wavelength of CWDM (1271~1331nm). CWDM transceiver is designed

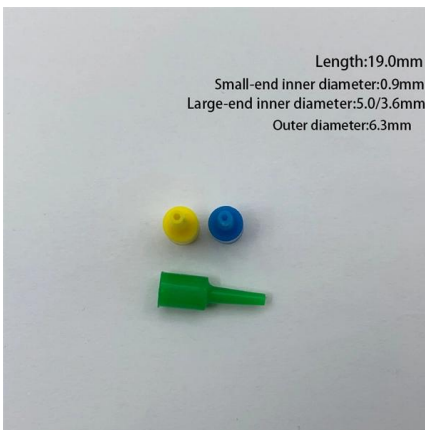


## The Most Comprehensive Guide Of Optical Modules

In mobile communication base stations, optical modules facilitate interconnections among different devices. 1.25G, 2.5G, 6G, and 10G optical modules are predominantly utilized for

## ITPro Today, Network Computing, IoT World Today combine with

ITPro Today, Network Computing and IoT World Today have combined with TechTarget . The page you are looking for may no longer exist.



## What is an SFP Optical Module? The Complete Guide to

Understand the core function, compare data rates (1G to 25G), learn critical compatibility rules, and follow our 5-step checklist for selecting the perfect

## A Deep-dive into 1.25G Duplex SFP Optical Transceivers

What Are 1.25G Duplex SFP Optical Transceivers? 1.25G Duplex SFP transceivers are compact optical modules designed for dual-fiber communication,



## Dual-Rate 10/25G Transceiver Module Overview

The 10/25G dual rate module is an optical transceiver that can operate at two different data rates, 10 Gbps and 25 Gbps. This versatility allows



## Is SFP single or multimode?

In fact, these two is a thing, 1.25g optical module is 1g optical module. First of all, we need to understand that g on behalf of the optical module transmission rate of gigabit, optical module



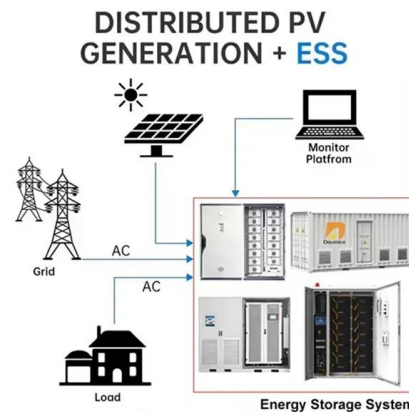
## A Deep-dive into 1.25G Duplex SFP Optical Transceivers

1.25G Duplex SFP transceivers are compact optical modules designed for dual-fiber communication, where one fiber is used for transmitting data and



## 25G optical modules for your network

25G optical module is an optical fiber communication module with a transmission rate of 25Gbps, which is widely used in high-bandwidth scenarios



## 25G Multimode Optical Module: SFP-25G-SR and SFP-25G-ESR

SFP -25G-SR optical module adopts the hot-swappable SFP28 package, with an operating wavelength of 850nm. It is a full-duplex transceiver module. It is designed for short-distance data



### Understanding SFP to SFP+ Compatibility: A

Can a 10G SFP+ module in one switch communicate with a 1G module in another and negotiate? The answer depends on the type of wiring and



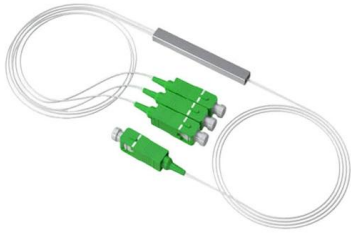
### How to Choose the Ideal 25G Optical Transceiver?

As the demand for data continues to surge in scenarios such as data centers, cloud computing, and 5G base stations, selecting the right optical module becomes critical for ensuring

### An In-depth Guide to 25G SFP28 Optical Transceiver

The 25G optical transceiver, particularly the 25G SFP28 optical transceiver module, represents a versatile, future-ready solution for scaling bandwidth in data centers,





## **10G vs 25G SFP: Unraveling the Differences Between**

One of the main differences between the two is bandwidth availability, where 25G SFP28 modules, in contrast to 10G SFP transceivers, offer 2.5 more

## **Contact Us**

---

For datasheets, pricing, or custom telecom energy solutions, please visit:  
<https://www.koskolong.co.za>