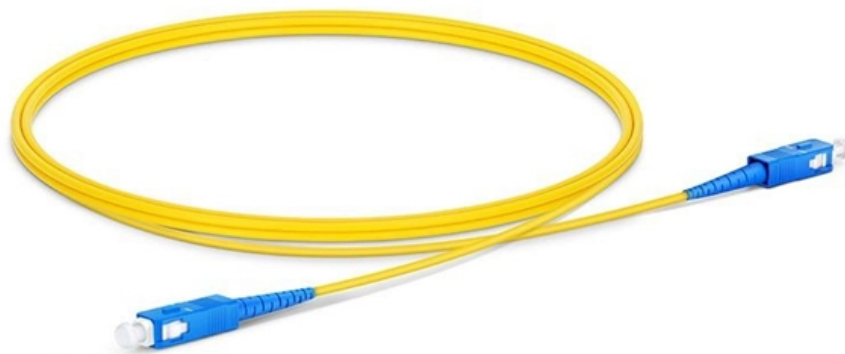




Adam Tas Corridor Energy

Can an LC adapter be used for 10 Gigabit Ethernet



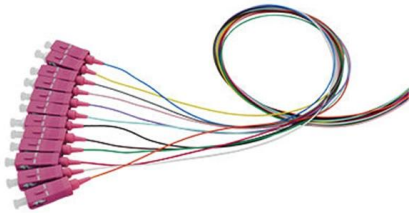


Overview

10 Gigabit Ethernet (10GE, 10GbE, or 10 GigE) is a group of technologies for transmitting at a rate of 10. Unlike previous Ethernet standards, 10GbE defines only point-to-point links which are generally connected by ; shared-medium operation has not been carried over fro.



Can an LC adapter be used for 10 Gigabit Ethernet



StarTech ST1000SPEXD4 Dual Port Gigabit PCI Express Server

The ST1000SPEXD4 PCI Express Dual-Port Gigabit Network Card lets you add two gigabit Ethernet ports to a client, server or workstation through a single PCIe slot. Each port provides 10/100/1000

Intel® Network Adapter Driver for Windows 7*

This download contains the Intel® Ethernet network drivers and software for Windows 7*. Which file should you download? Note: 10GbE adapters



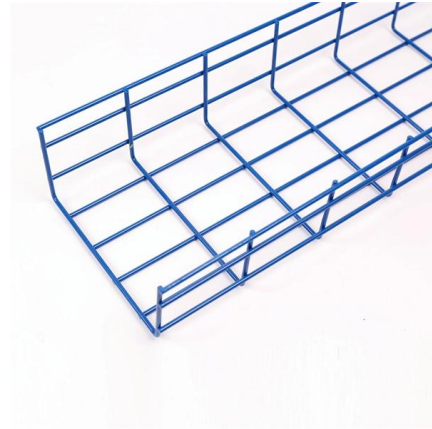
10G Fiber to Ethernet Media Converter Kit LC Single

Designed to deliver a self-healing network that always works as



Support Documents and Downloads

Search technical documentation and downloads including firmware and drivers.



10 Gigabit Fiber Media Converter

Our LC multimode 550m 1310nm gigabit fiber media converters are designed to convert data signals between 10/100/1000Base-T and 1000Base-LX fast ethernet



Fiber Optic Cables vs. Ethernet Cables: What's the

Fiber Optic vs. Ethernet: Key Differences The key difference in the fiber optic cables vs. Ethernet cables debate is in their physical construction,



Media Converters (1000+ products) compare price now »

Media Converters are capable of supporting high-speed networks, including gigabit Ethernet and beyond, depending on the model. They ensure seamless data transfer across different media types.





Gigabit Ethernet

It came into use in 1999 and has replaced Fast Ethernet in wired local networks due to its considerable speed improvement over Fast Ethernet, as well as its use of



Everything You Need to Know About Ethernet

By 2002, 10-Gigabit Ethernet was possible. Power over Ethernet, or PoE, which enabled devices to use a single cable for power and networking,

Ethernet over twisted pair

Ethernet over twisted-pair technologies use twisted-pair cables for the physical layer of an Ethernet computer network. They are a subset of all Ethernet physical layers.



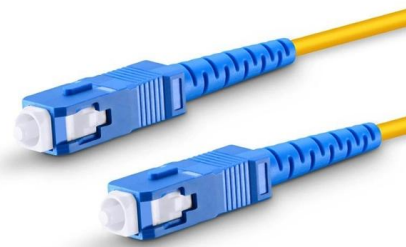
10 Gigabit SFP+ LC to RJ45 Fiber Optic to Ethernet

QuickTreX® 10G SFP+ LC to RJ45 media converters bridge fiber and Ethernet seamlessly, supporting up to 10 Gbps for demanding network environments.



Fiber Ethernet Media Converter-Single Mode 2 Gigabit Bridge, LC

Fiber Ethernet Media Converter-Single Mode 2 Gigabit Bridge, LC Transceiver SFP Module, Mini Auto Sensing Network Extender, RJ45 10-100-1000Mbps Adapter, Metal Signal , for IT



Pre-Terminated Patch Panel

Standard 19" width Max 144 fibers in 1U MPO/Fusion Dual-Purpose



Removable Cable Management Tray



Transparent Front Cover



High-Quality Matte Coated Steel

Gigabit Ethernet

In computer networking, Gigabit Ethernet (GbE or 1 GigE) is the transmission of Ethernet frames at a rate of a gigabit per second. The most popular variant,

5 Best Thunderbolt 3 Ethernet Adapters in 2026

The best Thunderbolt to Ethernet adapters available for purchase in 2026. In our review of the Thunderbolt to Ethernet adapters, we have selected the best





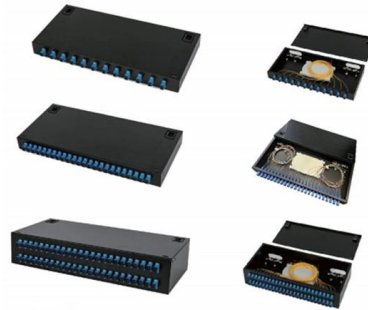
Multimode Fiber to Ethernet Media Converter, LC, 550M

Extend your 10/100/1000 Mbps Gigabit Ethernet connection up to 550 m (1,804 ft.)

10 Gigabit Ethernet

Overview Physical layer modules Optical fiber Copper WAN PHY (10GBASE-W)

10 Gigabit Ethernet (10GE, 10GbE, or 10 GigE) is a group of computer networking technologies for transmitting Ethernet frames at a rate of 10 gigabits per second. It was first defined by the IEEE 802.3ae-2002 standard. Unlike previous Ethernet standards, 10GbE defines only full-duplex point-to-point links which are generally connected by network switches; shared-medium CSMA/CD operation has not been carried over fro



Trendnet TI MGBS20, 1000Base LX Industrial SFP

Key Specs Adapter Type: Wired General Brand: Trendnet Product Name: TRENDnet TI-MGBS20, 1000Base-LX Industrial SFP Single- Mode LC Module (20km),

Connectivity 10GbE Network Adapters

For mid-range distances, use laser optimized multi-mode fiber (LOMMF) cables, either OM3 or OM4, with SFP+ connectors. For long-range

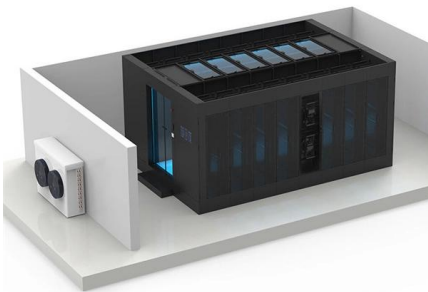


distances, use single-mode fiber-optic cables (OS1), also



Cudy 5 Port Multi Gigabit Ethernet Switch, 5 2.5Gbps

Shop Cudy 5 Port Multi Gigabit Ethernet Switch, 5 2.5Gbps Ethernet RJ45 Ports, Metal, Loop Detection, 802.3az, Fanless, Grey Gray products at Best Buy. Find



Plugable USB C to Gigabit Ethernet Adapter Black

Use the USB-C to Ethernet adapter for adding a wired gigabit network to computers, laptops, and tablets, or replacing or upgrading network adapters for your



Used 2500Mbps Type C to RJ45 Ethernet Adapter 10/100/1000M

When you click on links to various merchants on this site and make a purchase, this can result in this site earning a commission. Affiliate programs and affiliations include, but are not limited to, the eBay



10GBASE-T Ultimate Guide: Introduction, Cable, Pros

10GBASE-T is a local area network (LAN) connection technology applied in 10 Gigabit Ethernet. Using unshielded twisted pair (UTP) copper cable as



UGREEN USB to Ethernet Adapter, 1Gbps Gigabit

Shop UGREEN USB to Ethernet Adapter, 1Gbps Gigabit Network Adapter for Laptop, Nintendo Switch, and More Black products at Best Buy. Find low

Used A Pair of 1.25G/s Bidi Gigabit Multi-Mode Fiber Ethernet Media

Price: US \$97.80 Brand New A Pair of 1.25G/s offeri Gigabit Multi-Mode Fiber Ethernet Media Converter with 2PCS offeri SFP LC Dual Transceiver Module Included, 10/100/1000Base-Tx to 1000Base-SX



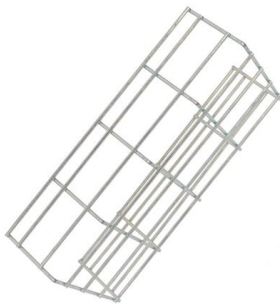
IBM i: Gigabit and 10 Gigabit Ethernet

System i® products support Gigabit and 10 Gbps Ethernet, which requires the use of a 1 Gbps or 10 Gbps input/output adapter (IOA). The support for 10 Gbps Ethernet is limited to some models.



10 Gigabit Ethernet , 10GE Types and Cable

This post discusses what 10 Gigabit Ethernet is and the different types of 10G Ethernet, along with the compatible fiber cables for each type.



SFP Optical Transceiver , SFP Optical Module , Perle

For example, by simply replacing the pluggable optical transceiver, a media converter that was originally used in a multimode network can be re-configured to

Contact Us

For datasheets, pricing, or custom telecom energy solutions, please visit:
<https://www.koskolong.co.za>