



Adam Tas Corridor Energy

Can the Xiaomi switch be connected to Mi Home





Overview

The Xiaomi Smart Wireless Switch Bluetooth is a smart remote control that can be used to control various home appliances. It works with the Gateway Mi Home App, which allows you to set schedules and timers, and monitor energy consumption. Looking for smart switch that works with xiaomi mi home app?

For some reason can't find smart switch by xiaomi that has global version or from another manufacturer that works with the mi home app. I've finally got my hands on some of these remote switches, but the Mi Home app offers quite limited capabilities - some of the devices only have a "turn on" or "turn off" option, without "turn on/off".



Can the Xiaomi switch be connected to Mi Home



Using Aqara Cube or Xiaomi Wireless Switch for more elaborate

I've finally got my hands on some of these remote switches, but the Mi Home app offers quite limited capabilities - some of the devices only have a "turn on" or "turn off" option, without "turn on/off".

How to Use Smart Home Devices with Mi Home App

Managing smart home devices can be challenging when some devices only work with specific regional settings in the Mi Home app. This guide will help you



Link Mi device with Mi Home app

Link Mi device with Mi Home app To control your Xiaomi Smart devices by your Android, iOS, or Alexa, you will need to link your Mi Device to with Mi Home app.



XIAOMI SMART HOME HUB 2 USER MANUAL Pdf

What smart home devices can connect to the Xiaomi Smart Home Hub 2 Switch? The Xiaomi



Smart Home Hub 2 can connect with Wi-Fi, Zigbee, and Bluetooth

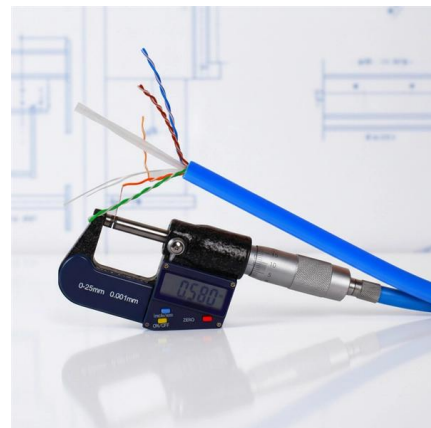


All Specs, Features of Xiaomi Bluetooth Speaker , Xiaomi

With seamless connectivity between the speaker and the Xiaomi HyperOS mobile operating system, one tap on the NFC area of the

Mi Wireless Switch

*To use the instant remote calling function, a speaker device that has been through the Xiaomi Home automatic setup process is required. Compatible devices



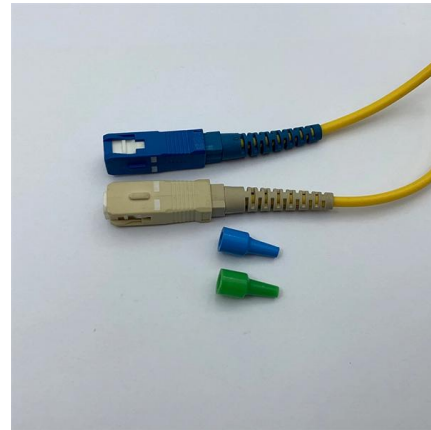
How can I use the Xiaomi Home Hub to enable local

1) When using the Mi Home/Xiaomi Home app to control devices and manual scenes, you can use the Xiaomi Home Hub to control devices on your local



The Ultimate Guide to Xiaomi Smart Switch Integration with Google Home

By connecting your Xiaomi Smart Switch to Google Home, you can control your smart devices using voice commands, schedules, and automation. Imagine effortlessly turning on your lights, adjusting



Instructions for Hub and Gateway

Xiaomi smart home devices are mainly connected via Wi-Fi and Bluetooth. Wi-Fi connection is established via the router at home, while Bluetooth connection

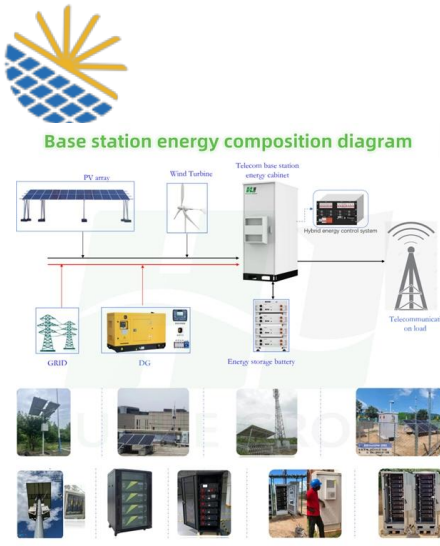
Smart Wall Switches: what the difference, and how to

The Xiaomi Smart Wireless Switch Bluetooth is a smart remote control that can be used to control various home appliances. It works with the Gateway Mi Home



Mi Wireless Switch

Mi Wireless Switch: Instant remote calling*, One-tap smart scene activation, Triple control in one device



The Ultimate Guide to Using Xiaomi Smart Wireless Switch with Home

From controlling lights and thermostats to triggering alarms and notifications, the Xiaomi Smart Wireless Switch can do it all. Advanced Tips and Tricks Discover some lesser-known features and hacks to



Instructions for Hub and Gateway

Like a router, a Bluetooth gateway can connect multiple devices. What is the local hub network? Hub devices (hereinafter referred to as the hub) and other Xiaomi



Xiaomi Electric Scooter 6 Max

Xiaomi Electric Scooter 6 Max recovers kinetic energy from each coasting phase and converts it into usable power, further extending the riding range. You can also



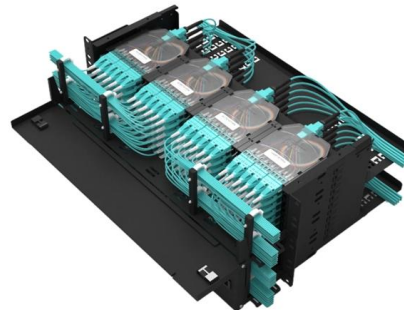


Xiaomi Smart Wireless Switch Bluetooth

The Xiaomi Smart Wireless Switch Bluetooth is a smart remote control that can be used to control various home appliances. It works with the Gateway Mi Home App, which allows you to set

Xiaomi Home

Configuration To add the Xiaomi Home hub to your Home Assistant instance, use this My button: Xiaomi Home can be auto-discovered by Home Assistant. If an



Xiaomi Smart Band 8 Review

Xiaomi has refined the design to improve both the look and functionality of the Smart Band 8, and it's a move that pays dividends.

Mi Wireless Switch FAQ

Mi Wireless Switch FAQ Q:1.What actions does this Mi Wireless Switch support? A:It supports single press, double press, and long press. It can control other smart devices with different actions.



Link Mi device with Mi Home app

To control your Xiaomi Smart devices by your Android, iOS, or Alexa, you will need to link your Mi Device to with Mi Home app. 1.Download Mi Home app from



Looking for smart switch that works with xiaomi mi home app

Looking for smart switch that works with xiaomi mi home app? For some reason can't find smart switch by xiaomi that has global version or from another manufacturer that works with the mi home app.



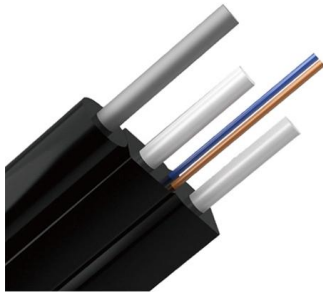
ZHA

Introduction: This Blueprint allows you to configure an Xiaomi Mijia Round Wireless Switch (WXKG01LM) paired to the ZHA integration. The Zigbee



How to Connect Xiaomi to Google Home

Connecting Xiaomi smart devices to Google Home enhances convenience, automation, and overall smart home functionality. By following this



All Specs, Features of Xiaomi Watch S4 , Xiaomi

A smart, connected lifestyle Xiaomi Smart Hub* Seamless interconnectivity Remote photo-taking, find my phone, earphone settings*, and more. It can also control Xiaomi Home devices*, making smart wearables and home life more intelligently interconnected.

The Mi Wireless switch can't be connected to Mi Home app.

Please ensure that the Mi Wireless Switch is compatible with the Mi Home app. Some devices may not be supported by certain versions of the app or may require firmware updates for compatibility;



Mi Home IOT devices (cameras, doorbells, lights, etc.) do not

If you can't find a suitable Wi-Fi, please clear the device cache (not clear data), and then connect to the corresponding Wi-Fi with your phone to rebind the device (if the device only supports connecting to



Link Mi device with Mi Home app

After your device connected your Mi Home app, to use Xiaomi Smart devices with Assistant, you need to add Mi Home service in the Assistant app. You also need to link your Mi account to Assistant.



Contact Us

For datasheets, pricing, or custom telecom energy solutions, please visit:
<https://www.koskolong.co.za>