



Adam Tas Corridor Energy

Canadian Antioxidant Cable Tray Standards





Overview

The new edition of the CSA Standard cover requirements for nonmetallic trays and associated fittings for the support of cables, insulated conductors, and raceways designed for use in accordance with the rules of the Canadian Electrical Code (CEC), Part 1 and the. This CSA Certification Informs announces the publication of the first edition of CSA Standard C22. , is a welded wire-mesh cable management system made of high-strength steel wire. All illustrations, descriptions and technical information included in this document are provided as indications and can cable trays are equivalent. standard specifies the requirements and test methods for cable trays, cable ladders, supports and their accessories to ensure complete safety of installations. The topics included are: Mechanical strength – Electrical continuity DIN 4012-12: Specifies fire resistance of electric cable systems.



Canadian Antioxidant Cable Tray Standards



Tray cables

Scope 1.1 This Standard applies to single conductor cables and multi-conductor cables, without metal sheath or armour, suitable for use in cable trays and other applications when installed in accordance

CSA C22.2 NO. 230:17 (R2021) Tray cables

CSA C22.2 NO. 230:17 (R2021) Tray cables
Preface This is the third edition of CSA C22.2 No. 230, Tray cables, one of a series of Standards issued by CSA Group under the Canadian Electrical Code,



CSA C22.2 NO. 230:17 (R2021) , Codes & Standards

This Standard specifies requirements for single conductor and multi-conductor constructions, without metal sheath or armour, suitable for use in cable trays and other applications when installed in

CSA C22.2 NO 230

scope: This Standard applies to single conductor cables and multi-conductor cables, without metal sheath or armour, suitable for use in cable trays



and other applications when installed



The Standard for Cable Trays: How to Ensure Safe

However, cable trays must comply with specific codes and standards to ensure proper design, installation, and maintenance. This article will provide an in-depth

Metal Cable Tray Systems , Standards Council of Canada

This is the common CSA and NEMA Standard for metal cable tray systems. It is the third edition of CSA C22.2 No. 126.1, superseding the previous editions published in 2002 and 1998, and



Section 27 05 36 Cable Tray for Communications Systems

3.2 Wire Mesh Cable Tray 3.2.1 Cable trays shall be sized (including 10% growth) as per the drawings and will accommodate all horizontal and/or backbone cabling within the Telecommunications Room



Tray Cable

This Standard applies to single conductor cables and multi-conductor cables, without metal sheath or armour, suitable for use in cable trays and other applications when installed in accordance

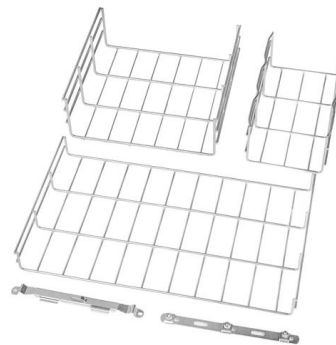


Nonmetallic Cable Tray Systems (Bi-National standard, with UL 568)

Scope This Standard specifies the requirements for nonmetallic cable trays and associated fittings designed for use in accordance with the rules of the Canadian Electrical Code (CEC) Part 1, and the

Section 27 05 36 Cable Tray for Communications Systems

The cable tray system shall accommodate the weight of the horizontal and/or backbone cabling. The rung spacing shall be between 6" (in) 152 mm to 8" (in) 203 mm.



Ref No

The new edition of the CSA Standard cover requirements for nonmetallic trays and associated fittings for the support of cables, insulated conductors, and raceways designed for use in accordance with the



CSA C22.2 No. 230-2017

This is the third edition of CSA C22.2 No. 230, Tray cables, one of a series of Standards issued by CSA Group under the Canadian Electrical Code, Part II. It supersedes the previous editions published in



Understanding Cable Tray Grounding: A

Cable tray grounding is an indispensable aspect of electrical installations that plays a pivotal role in ensuring safety, reliability, and efficiency. It

Cooper B-Line

5) Enter all cable information as directed. Will need to enter cable quantity, number of conductors, wire size, voltage and cable type. The program will then search the database to fill in the remaining info.



News , TC Tray Cables Basics , Texcan

Type TC tray cables are unarmored cables rated for use in cable trays. While Teck90 has long been the standard Canadian industrial cable, tray cables are more typically used in equivalent



Metal cable tray systems , Standards Council of Canada

This Standard specifies the requirements for metal cable trays and associated fittings designed for use in accordance with the Canadian Electrical Code (CE Code), Part I, and the



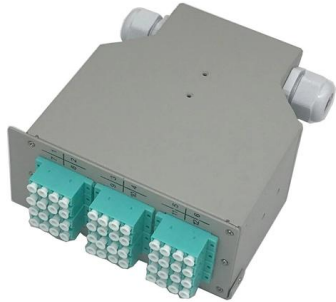
Codes and Standards , Cable Tray Institute

This standard specifies the requirements for nonmetallic cable trays and associated fittings designed for use in accordance with the rules of the Canadian Electrical Code (CEC) Part 1, and the National

GUIDE CABLE TRAYS TECHNICAL

Specifies requirements for metal cable trays and associated fittings designed for use in accordance with the rules of Canadian Electrical Code, Part I and the National Electrical Code®





Technical information

Technical information CSA and NEMA loading classes The standard classes of cable trays, as related to their maximum design loads and to the associated design support spacing based on a simple beam

The Standard for Cable Trays: How to Ensure Safe

The CEC is the Canadian counterpart to the NEC and provides requirements for the design, installation, and maintenance of electrical systems in Canada, including



Codes and Standards , Cable Tray Institute

The Cable Tray Institute is making available the current edition of this practical guide for the proper installation of aluminum or steel cable tray systems. These guidelines will be useful to engineers,

Cable Tray

This standard specifies the requirements for nonmetallic cable trays and associated fittings designed for use in accordance with the rules of the Canadian Electrical Code (CEC) Part 1, and the



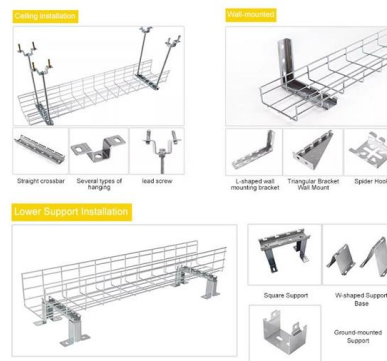
Cable Tray Technical Guide A practical guide to product selection and

This guide for engineers and installers has been developed by ABB as a practical reference regarding cable tray characteristics, installation, and requirements.

INFORMATION ON STANDARDS FOR CABLE TRAYS - K?raç Metal

NEMA VE1: Specifies requirements for metal cable trays and associated fittings designed for use in accordance with the rules of Canadian Electrical Code and the National Electrical Code.

INSTALLATION METHOD



Tray cables , Standards Council of Canada

This Standard applies to single conductor cables and multi-conductor cables, without metal sheath or armour, suitable for use in cable trays and other applications when installed in



Cable Tray Installation

This Standard applies to metal (Category A), nonmetallic (Category B) cable trays, and associated fittings greater than 100 mm wide, for the support of cables and insulated conductors



Contact Us

For datasheets, pricing, or custom telecom energy solutions, please visit:
<https://www.koskolong.co.za>