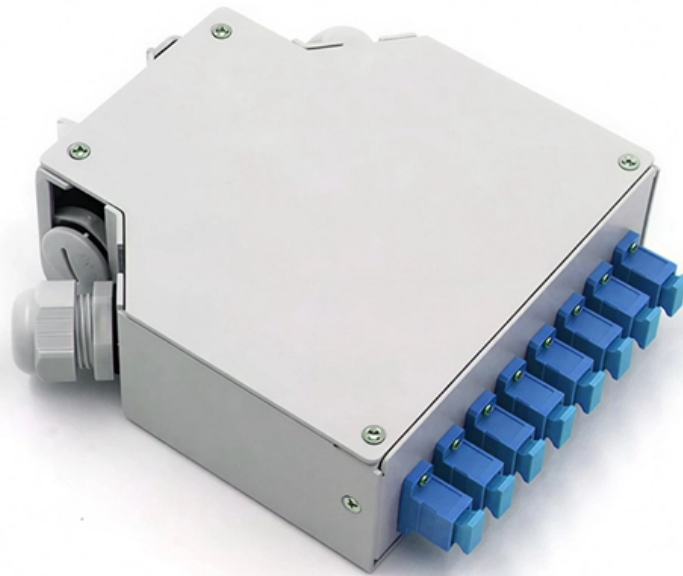




**Adam Tas Corridor Energy**

# **Cascading phenomenon exists in access switches**

---





## Overview

---

Cascade mode is one of the simplest switch network architecture methods available today. Multiple switches connected through their ports form a cascading network topology in this mode; data travels sequentially amongst them until reaching its final destination. The things to be aware of are that the more complex the network, the more likely you are to have issues, and that there is a limit on the diameter of the network - see.



## Cascading phenomenon exists in access switches

---

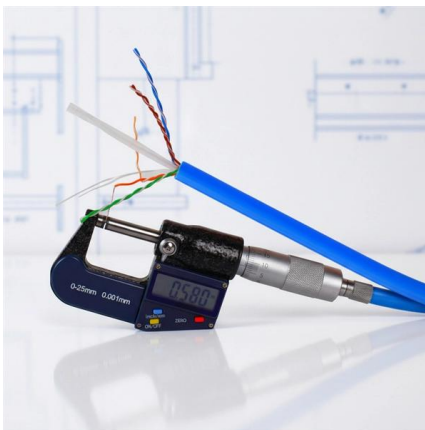


### Cascade phenomenon against subsequent failures in complex networks

Cascade phenomenon may lead to catastrophic disasters which extremely imperil the network safety or security in various complex systems such as communication networks, power

### Cascading failure

A cascading failure is a failure in a system of interconnected parts in which the failure of one or few parts leads to the failure of other parts, growing progressively as a



### Cascade effect

A cascade effect is an inevitable and sometimes unforeseen chain of events due to an act affecting a system. If there is a possibility that the cascade effect will have a negative impact on the system, it

### Problem with cascading of layer 2 switches

Hello friends, I am going to connect a five Nortel Bay stack switches which are placed one above



the other capable of 100Mbps each. i am cascading all the five switches in the 24th port



### **Cascading Effect: Unforeseen Consequences in Motion**

This phenomenon, known as the cascading effect, showcases the interconnectedness and complexity of various systems. In this article, we will

### **cascading access layer switches and prevent loop**

Do you have only one distribution switch because if you do that is your biggest single point of failure. In general cascading access-layer switches is not recommended as this just increases the



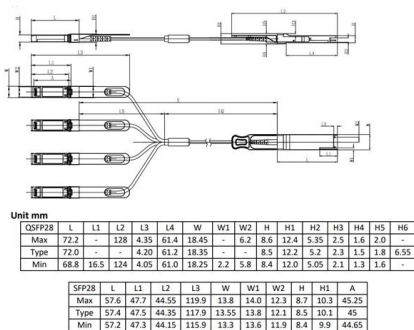
### **Cascading Failures in Agentic AI: Complete OWASP ASI08 Security**

The definitive technical guide to cascading AI failures aligned with OWASP agentic AI security guidelines: their mechanisms, manifestations, and mitigations.



## Switch/Hub Cascading

It will have a faster recovery after spanning tree events. When cascading router & switches, there are two issues to keep in mind. 1: the 3-4-5 rule for ethernet networks. You will not



## What is a cascade of switches? How many types of

The most fundamental principle for successful cascading is that the distance between any two nodes should not exceed the maximum span of the

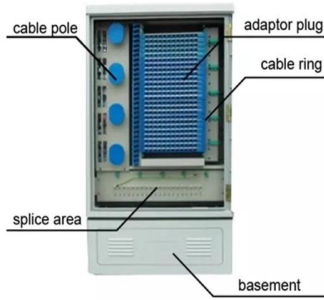
## Cascading Failure

Cascading failures refer to the phenomenon in which the failure of one node in an interconnected network causes multiple other nodes to fail. With the increasing interconnectedness of modern



## The Availability Cascade: How Information Spreads on a

An availability cascade is a self-reinforcing process where a certain stance gains prominence in public discourse, which makes people more likely to believe it and



## Cascade phenomenon in multilayer networks with

We show that a synergy exists between the failure of connectivity and dependency links that leads to an iterative process of cascading failures that has a devastating effect on the network



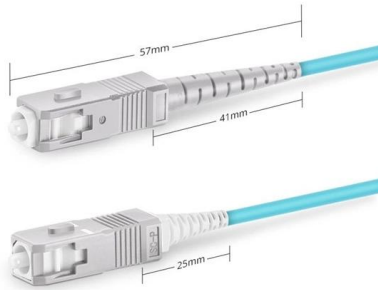
## Cascading Failures in System Dynamics

A comprehensive guide to cascading failures, their causes, and consequences in complex systems, and strategies for mitigation and prevention.

## Access Gateway Cascading

Access Gateway cascading is an advanced configuration supported in Access Gateway mode. Access Gateway cascading allows you to further increase the ratio of hosts to fabric ports to beyond what a





Simplex SC UPC

## Switch Network Structure: Cascading, Stacking,

Cascade mode is one of the simplest switch network architecture methods available today. Multiple switches connected through their ports form a

## Access Gateway Cascading Considerations

Issuing the `agshow --all` command displays details, such as Access Gateway and attached F\_Port information, for all AG core and edge switches connected to the fabric. Due to high subscription

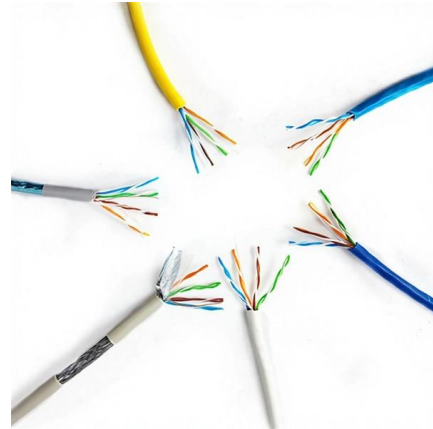


## What is switch cascading?

Switch cascading is a technique used to connect multiple Ethernet switches together to increase the number of available ports and expand the network's coverage area. This method is

## What Is The Difference Between Switch Cascading,

In large switch environments with multiple switches, the following three approaches address critical key technologies: cascading, stacking, and



### **What is the difference between switch cascading,**

In such an evolution, switches gradually replaced hubs, and interconnections between multiple switches gradually replaced a single switch



### **What is the disadvantage to cascading multiple switches?**

What you've got to weigh up against the cost of the installation is the cost of configuring, maintaining and purchasing multiple switches cascading off each other.



### **Cascading failures in large-scale distributed systems**

Conclusion Cascading failures are a dreaded and at the same time special phenomenon in distributed systems. That's because sometimes





## CASCADE FAILURE ON SDN AS INTERDEPENDENT NETWORKS

In interdependent networks, a cascade failure, which is a phenomenon in which a chain fault spreads to the entire system due to local failure and interruption has already been observed. This is a massive



### Switch cascading: Definition, functions & usage

Through cascading connections, network traffic can be dispersed among multiple switches to prevent a single switch from becoming a bottleneck of

### Cascading Switches. Will it affect performance?

The problem with cascading switches is that you are concentrating traffic on the links to upstream switches. For example, the last switch has 26 x 1G



### Cascading Failure Modeling and Resilience Analysis of

These phenomena can be abstracted as load-induced cascading failures: when a node fails due to capacity overload, logistics blockage, or



## Cascading layer 2 switches

Hi, We have a campus designed network that have a core level: 10720 routers on a ring topology, a distribution level: 3750 switches with ip routing, and an access level: 2950,2960,3550



## Cascade phenomenon in multilayer networks with dependence

This paper is organized as follows. In Section 2, we introduce the cascading model of multilayer networks with dependence groups and nested hierarchy. In Section 3, the cascading

## Access Gateway Cascading Considerations

Due to high subscription ratios that could occur when cascading AG switches, ensure there is enough bandwidth for all servers when creating such configurations.





## Contact Us

---

For datasheets, pricing, or custom telecom energy solutions, please visit:  
<https://www.koskolong.co.za>