



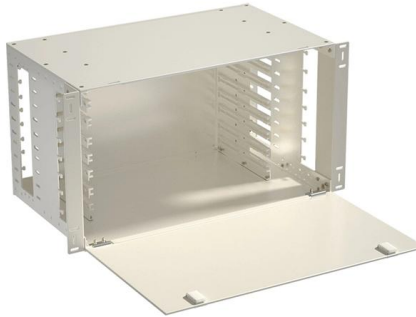
Adam Tas Corridor Energy

Certified Single-Fiber Bidirectional QSFP





Certified Single-Fiber Bidirectional QSFP



Datasheet 40GBASE-SR Bi-Directional QSFP LC Duplex Transceiver

Datasheet Description I, Pluggable, LC Duplex, Fiber-Optic QSFP+ Transceiver for 40 Gigabit Ethernet Applications. This transceiver is a high performance module for short-range duplex data

Introduction to 100G QSFP28 Bidirectional Transceivers

TARLUZ 100G QSFP28 Bidirectional transceivers are a cost saving solution for building a network or upgrading an existing network, the transceivers provide



Cisco QSFP-100G-B20U4-I and QSFP-100G-B20D4-I 100G 20km Bidirectional

Bidirectional 100Gb on a single fiber Whether it's building a network or upgrading an existing network, the Cisco® QSFP-100G-B20U4-I and QSFP-100G-B20D4-I transceivers provide 100G connectivity

100G QSFP28 BiDi : Optical Transceiver Module , NEC

NEC's 100G QSFP28 BiDi optical transceiver enables the transmission and reception of



100Gb/s high-speed data over a single optical fiber. By enabling bidirectional



Single Fiber Transceiver QSFP28-100G

The QSFP28-100G BiDi single fibre transceiver is the latest addition to DWDM.ME's portfolio of solutions The QSFP28-100G BiDi (Quad Small Form-Factor Pluggable 100G



QSFP-100G-SR1.2 vs. QSFP28-BIDI-100G: Choosing

Explore the key differences between the QSFP-100G-SR1.2 and QSFP28-BIDI-100G. Learn how to select the best module based on fiber



100G QSFP28 / SFP-DD Modules and Cables FAQ , FS

The 100G BiDi transceiver refers to the QSFP28 single-mode fiber bidirectional optical module applied to 100G Ethernet. Each optical port on the QSFP28 BiDi contains both a transmitter and receiver,





100G BiDi QSFP28 SR1.2 150m , Single Fiber , EDGEOPTIC

EDGEOPTIC 100G BiDi QSFP28 SR1.2: 150m OM5 MMF single fiber, 850/900nm, 1.9dB budget, 106.25 Gbps PAM4. LC simplex connector for fiber-efficient data centers.

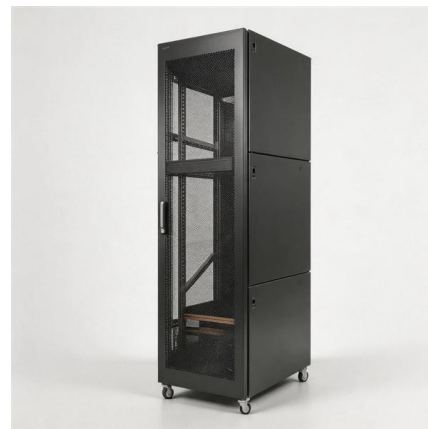


100G QSFP28 BIDI 30KM

The STC-QSFP28-BIDI-30KM is a high-performance 100G transceiver module using BiDi (Bidirectional) transmission technology, enabling simultaneous sending and receiving over a single fiber strand.

Cisco 40GBASE QSFP Modules Data Sheet

Cisco QSFP 40G BiDi The Cisco QSFP 40-Gbps BiDirectional (BiDi) transceiver (Figure 1) is a pluggable optical transceiver with a duplex LC connector interface for short-reach data



100G BiDi QSFP28 LR1 10km Side B , PAM4

Our EDGEOPTIC BIDI-100G-Q28-SL10B is a multi-vendor compatible 100G BiDi LR1 QSFP28 bidirectional optical module designed for next-generation 100



40G QSFP BIDI vs 40G QSFP SR4 vs 40G QSFP UNIV: What Is the

What Is 40G QSFP BIDI SR Optical Transceiver Module The 40GBASE-BiDi SR (Bidirectional Short Reach) module is a type of 40G optical transceiver that utilizes a single pair of



QSFP 40G SR BD: 40G QSFP+ BiDi Transceiver Explained

QSFP-40G-SR-BD achieves 40GbE full-duplex transmission over a single pair of multimode fibers by using bidirectional (BiDi) optical signaling, where two separate wavelengths carry transmit and

40G BiDi QSFP+ 150m MMF , Two-Fiber , EDGEOPTIC

EDGEOPTIC 40G BiDi QSFP+ transceiver: 150m OM4 multimode fiber, 850/900nm wavelengths, 2dB link budget, 41.25 Gbps. Two-fiber 40G solution, 0-70°C.





100G BiDi QSFP28 150m , Single Fiber MMF

EDGEOPTIC 100G BiDi QSFP28: 150m OM5 MMF single fiber, 850/900nm, 1.9dB budget, 106.25 Gbps. LC simplex connector, also supports 40G QSFP operation.

100G QSFP28 Single Fiber (BiDi) Modules: Technology, Benefits

100G QSFP28 single fiber (BiDi) modules are a practical, proven method to increase the effective capacity of existing fiber plants, reduce cabling complexity, and optimize total cost of

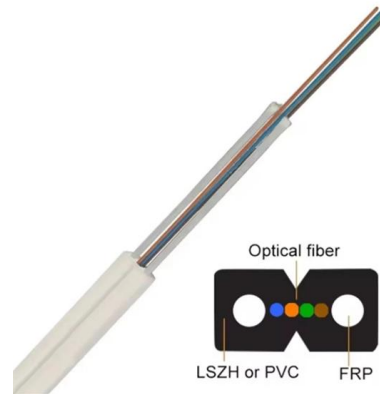


40G BiDi QSFP+: Single-fiber Bidirectional Transmission

The interfaces of optical modules are mainly divided into single-fiber bidirectional BiDi and dual-fiber bidirectional (Deplx). In the wavelength division multiplexing system, the line transmission

Understanding 100G Single Fiber QSFP28 Module for

100G single fiber QSFP28 modules enable fast, cost-effective network upgrades using one fiber strand, ideal for scalable modern data centers.



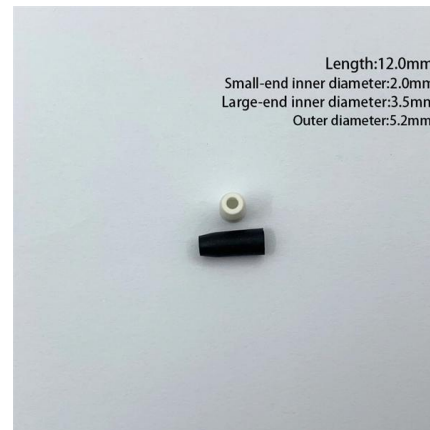
WebiTelecomms Cabling

100G QSFP28 Cable and Transceiver Modules Data Sheet , FS

It uses single-fiber bi-directional technology to transmit different wavelengths over a single fiber. Multiplexing and demultiplexing of the eight wavelengths are managed within the device.

Comprehensive Guide to 100G BIDI QSFP28

Unlike traditional transceivers that require two fibers (one for transmitting and one for receiving), the 100G BIDI QSFP28 uses bidirectional



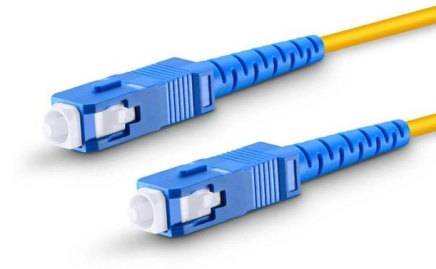
Optical Transceiver Buying Guide: SFP/QSFP Explained for

Understanding Fiber Compatibility: Single-Mode vs Multimode The choice between single-mode fiber (SMF) and multimode fiber (MMF) directly impacts the optical transceiver type: Multimode



The Ultimate Guide to QSFP Cables

For example, a QSFP-100G-LR4-S transceiver uses four 25G lanes multiplexed over single-mode fiber to achieve 100G line rate, as explained in



Cisco 400G Digital Coherent BiDi CFP2 Data Sheet

Cisco is now offering the new Cisco 400G Digital Coherent BiDi CFP2 capable of supporting single-fiber bidirectional coherent transmission.

40/100G Four-Channel Small Form (QSFP) Optical Transceivers

OptixCom's 40 Gb/s QSFP+ is a 4-lanel parallel pluggable fiber optics transceiver designed with advanced 850 nm VCSEL laser arrays and high speed electronics to achieve the optimum



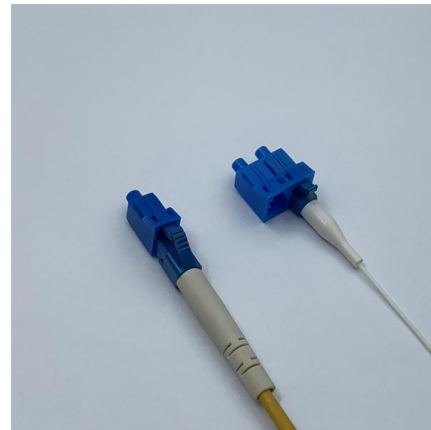
100G QSFP28 Cable and Transceiver Modules Data Sheet , FS

QSFP-DR-100G The QSFP-DR-100G Module supports link lengths of up to 500m over a standard pair of G.652 Single-Mode Fiber (SMF) with duplex LC connectors. The 100 Gigabit Ethernet signal is



100G BiDi QSFP28 SR1.2 150m , Single Fiber , EDGEOPTIC

Our products go through strict testing and follow ISO 9001:2015 certified processes to ensure reliable, consistent quality you can count on. The EDGEOPTIC BIDI-100G-QSFP28-151 is a



40G QSFP+ SR BIDI 850nm/910nm 100m Module

QSFP 40G SR BIDI is a transceiver for 40 Gigabit Ethernet Applications, supports transfer over 100m, IEEE 802.3ba-2010, 850nm/910nm, QSFP MSA - AscentOptics.

Arista 100G Transceivers and Cables: Q& A

Arista's 100G connectivity solutions include copper cables and Active Optical Cables (AOCs) to enable cost effective short reach options, as well as a wide range of optical transceivers in QSFP form





Contact Us

For datasheets, pricing, or custom telecom energy solutions, please visit:
<https://www.koskolong.co.za>