



Adam Tas Corridor Energy

Checking the optical module model in Cisco





Overview

Run the following command to view device board information and identification details of all optical modules: `show inventory` The output includes the module type, serial number, Cisco-compatible part number, and other details, which are retrieved from the pre-programmed data in the. This article provides instructions on how to view the Optical Module Status on your switch through the Command Line Interface (CLI). An SFP module is a hot-swappable transceiver that converts electrical signals into optical (or electrical, in copper variants) signals. It enables flexible connectivity between networking devices and supports different speeds, wavelengths, and distances.



Checking the optical module model in Cisco



Optical Transceiver Market Price Trends 2026: TCO & Risks

Discover the real engineering TCO behind optical transceiver market price trends in 2026. Explore 800G thermal risks, LPO failures, and hidden OPEX metrics.

Will Third-Party SFP Module Work in Cisco/Juniper/HP Switches?

You can often make non-OEM optics work in Cisco, Juniper and HPE/Aruba boxes, but there are three practical limits to accept up front: vendor enforcement (software checks and possible blocking),



QSFP Optical Module Planning for the Future: Key Trends 2026-2034

Explore the dynamic QSFP optical module market, forecast to reach \$14.7 billion by 2025 with a 4.5% CAGR. Discover key drivers, trends, and applications in high-speed networking and data

Buy Cisco 40G Optical Modules , Price, Stock & Compatibility

Shop Cisco 40G optical modules for QSFP+, BiDi, CFP, and 40G uplink deployments. Check



compatibility, stock, and request pricing for your project.



Products

The solution simplifies transport between data centers by replacing stand-alone optical transponders with the Cisco ® portfolio of standardized

How to Test Cisco Transceivers: NX-OS Compatibility

Master Cisco transceiver testing with NX-OS CLI commands. Step-by-step guide for compatibility checks, diagnostics, and troubleshooting network



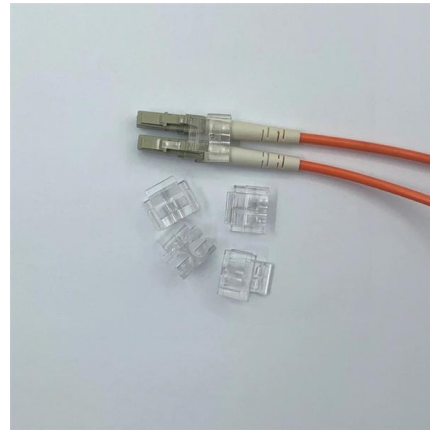
Cisco Networking Products and Solutions

Cisco Networking provides intelligent network solutions for organizations to securely connect users, devices, applications, and workloads everywhere.



Cisco SFP Commands Cheat Sheet: Check Status

Learn how to check SFP module health on Cisco switches. This guide covers essential CLI commands (show inventory, DOM), fixes for "unsupported



Cisco Products: Networking, Security, Data Center

Explore Cisco's comprehensive range of products, including networking, security, collaboration, and data center technologies

GLC-LH-SMD Cisco 1000BASE-LX/LH SFP Module - Specs

Confirm correct fiber type Verify switch compatibility Low Optical Power? Inspect connectors for dust Check for excessive fiber bending Replace damaged patch cables Buying Guide - Before You



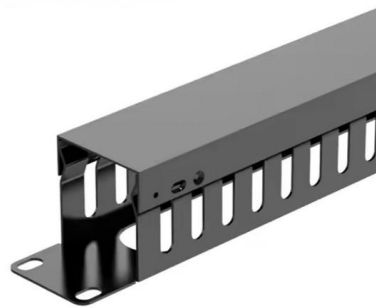
Cisco SFP käskude spikker: oleku kontrollimine ja tõrkeotsing (202

Learn how to check SFP module health on Cisco switches. This guide covers essential CLI commands (show inventory, DOM), fixes for "unsupported transceiver" errors, and interpreting optical power levels.



Cisco SFP ???????????? ?????? ?????????????: ?????????? ????????????

Learn how to check SFP module health on Cisco switches. This guide covers essential CLI commands (show inventory, DOM), fixes for "unsupported transceiver" errors, and interpreting optical power levels.



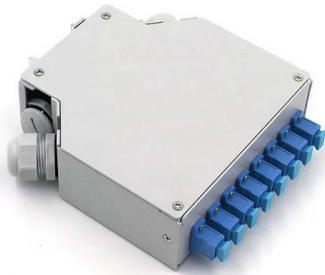
How To View Port Status And Optical Module Information On Cisco

Additionally, identifying module information helps detect coding compatibility between the module and the switch. The following introduces the specific operations to view the working status

Learn how to choose the right SFP module for your network. Avoid

Learn how to choose the right SFP module for your network and avoid common compatibility mistakes. This practical guide explains SR vs LR, singlemode vs multimode,





How to show interface transceiver details on Brand

This CLI command, "show fiber-ports optics-eeprom," allows you to check the SFP's EEPROM information, including the vendor_name, serial

How to Use Cisco Command to See SFP Module Details?

Small Form-Factor Pluggable (SFP) modules are essential transceivers used in Cisco switches and routers to connect devices via fiber or copper cables. Knowing how to view SFP module details helps



Optical Transceiver Manufacturer, How To Check Optical

This paper introduces the models of some optical modules, which is helpful for us to understand the parameter information of optical modules, so as to facilitate the

What Is an SFP Optic Module and How Does It Work

SFP optic modules convert electrical to optical signals for fast, long-distance data transfer. Hot-swappable, versatile, and compatible with various



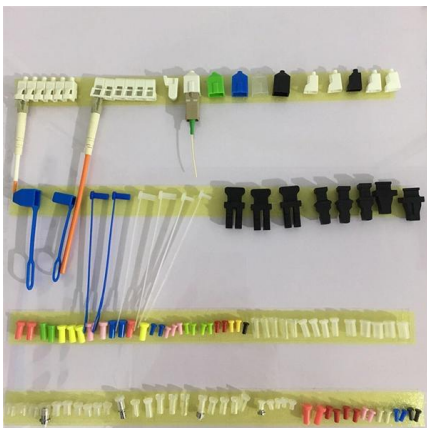
Cisco Command to Check SFP Module Details

For network engineers, knowing how to view and interpret SFP information from the Cisco command-line interface (CLI) is essential. By checking



ITPro Today, Network Computing, IoT World Today combine

ITPro Today, Network Computing and IoT World Today have combined with TechTarget . The page you are looking for may no longer exist.



How to Check SFP Module: Testing and Compatibility

Learn how to check an SFP module using Cisco commands, diagnostics, and compatibility checks. Step-by-step guide to test SFP optics and



Cisco SFP Modules for Gigabit Ethernet Applications

This data sheet describes the benefits, specifications, and ordering information for the Cisco SFP Modules for Gigabit Ethernet Applications.

Integrated Aluminum Alloy
Die Casting



Durable and Secure Metal Screws



How to View Optical Module Status on a Cisco Switch

In this Cisco Tech Talk, learn how to view the optical module status on a Cisco switch using the Command Line Interface (CLI).



Contact Us

For datasheets, pricing, or custom telecom energy solutions, please visit:
<https://www.koskolong.co.za>