



Adam Tas Corridor Energy

Chilean warranty optical cable G 654





Chilean warranty optical cable G 654

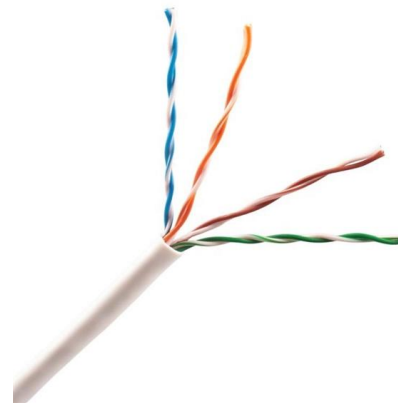


The Difference Between G652,G657A,G655 And G654

G654 fiber supports ultra-long-distance submarine and backbone transmission with minimal signal attenuation. We can see from above that their

STL G654E 125 Fibre

International Standards STL G654E 125 Fibre complies or exceeds the recommendation of ITU-T G.654.E.



ITU-T Rec. G.654 (07/2010) Characteristics of a cut-off shifted, single

Summary Recommendation ITU-T G.654 describes the geometrical, mechanical and transmission attributes of a single-mode optical fibre and cable which has the zero-dispersion wavelength around

ITU-T

Document History ITU-T G.654 March 1, 2020
Characteristics of a cut-off shifted single-mode optical fibre and cable



Optical cable with ITU-T G.654.E fibre removes barriers to delivering

A new whitepaper from fibre cable experts ACOME Group and Sumitomo Electric Industries, Ltd. says that existing optical fibre cables will only be able to meet the long-term transmission capacity needs



The Difference Between G652,G657A,G655 And G654

Optical cables are engineered to meet strict optical,mechanical,and environmental performance standards for reliable long-term operation. Optical



Optical Fiber G652, G657A, G655, G654

There are several kinds of optical fibers. When checking the goods, it is messy. After checking for a long time, I am afraid of making mistakes. In order to let customers





G.654 : Characteristics of a cut-off shifted single-mode optical

Characteristics of a cut-off shifted single-mode optical fibre and cable Superseded



GL FIBER® ITU-T G.654 Low-loss & Bend-insensitive Fiber

GL FIBER® fibre complies with or even exceeds the ITU-T G.654.B/E recommendation and IEC 60793-2-50 B1.2 Optical Fibre Specification. GL FIBER tightens many parameters of fibre products.

TXF Optical Fiber , Large Effective Area G.654.E Fiber

The superior attributes of TXF ® optical fiber, compliant to ITU-T G.654.E, allow for the provision of an additional network margin that can be leveraged to enable



ITU-T Recommendation database

Also, in this version a note has been added for cable cut-off wavelength when ITU-T G.654.E fibre is used at central frequencies for applications specified in Recommendation ITU-T G.698.2. Ed.



What Is The Difference Between G.654E and G.654C

As a leading fiber optic manufacturer with 21 years of experience, GL FIBER specializes in producing high-performance G.654 fiber, including G.654.E



ITU-T G.654.E Fiber, PureAdvance for Terrestrial Long-Haul Networks

core area G.654 fibers have been widely used in submarine cables. G.654.E was introduced in 2016 as a new category of G.654 in order to significantly improve the optical signal-to-noise ratio (OSNR)

Corning® TXF® Optical Fiber

The superior attributes of TXF® optical fiber, compliant to ITU-T G.654.E, allow for the provision of an additional network margin that can be leveraged to enable





G.654E Optical Fiber

G.654E Futong's G.654E single mode optical fiber enables customers to construct high performance optical communication networks. It meets international standards including ITU-T G.654.E, it has a considerably low

G.654 : Characteristics of a cut-off shifted single-mode optical

Recently posted - Search Recommendations
G.654 : Characteristics of a cut-off shifted single-mode optical fibre and cable



ITU-T RECOMMENDATION G.654

Characteristics of a 1550 nm wavelength loss-minimized single-mode optical fibre cable
Reedition of CCITT Recommendation G.654 published in the Blue Book, Fascicle III.3 (1988)
NOTES

ITU-T Rec. G.654 (12/2006) Characteristics of a cut-off shifted single

Summary This Recommendation describes the geometrical, mechanical and transmission attributes of a single mode optical fibre and cable which has the zero-dispersion wavelength around 1300 nm



G.654.E Fibre Cable

The cable acts as a mechanical and environmental shield, protecting the fibre from stress, moisture, temperature changes, and other hazards encountered over its service life. The longevity of an optical



Introduction to

Optic fiber is the key to fiber optic network. What is fiber optic network? There are seven kinds of optic fiber according to ITU standard: G651, G652,



Difference between G652 fiber and G654 fiber

02 G.654 optical fiber is mainly used in submarine cable communication systems. In order to meet the needs of long-distance and large



TXF® Optical Fiber , G.654.E Fiber , Corning

The superior attributes of TXF ® optical fiber, compliant to ITU-T G.654.E, allow for the provision of an additional network margin that can be leveraged to enable reliable, high-data-rate transmissions over



Ultra-low loss terrestrial long-haul fibers PureAdvance(TM) series

Ultra-low loss (ULL) optical fibers, PureAdvance(TM) series compliant with G.654.E, support high-capacity long-haul terrestrial networks. Employing pure silica core technologies, we promise to contribute to

White paper G.654.E Fibre Cable , Acome

ACOME and Sumitomo Electric have developed a new hybrid solution that allows network operators to deploy a single universal cable that supports both current and future network needs.



Low Loss Optical Fibers for Terrestrial Long-Haul Networks,

We have developed "PureAdvance," a low-loss and low-nonlinearity pure silica core fiber complying with ITU-T G.654.E, and started supplying it for terrestrial long-haul networks.



G.654 : Characteristics of a cut-off shifted single-mode optical

About ITU About ITU Home : ITU-T : Publications : Recommendations : G Series : G.654 : G.654 (08/24) Recently posted - Search Recommendations G.654 : Characteristics of a cut-off shifted



G654.E Fiber Optic Cables

The table below illustrates the differences in the characteristics of single-mode fiber optic cables based on G.654.A, G.654.B, G.654.C, G.654.D, and G.654.E

High-Speed Long-Haul Optical Fiber Solution

As the demand for high-speed and long-haul optical communication continues to grow, the selection of the right fiber optic solution becomes crucial. G.654.E single-mode fiber is specifically



Contact Us

For datasheets, pricing, or custom telecom energy solutions, please visit:
<https://www.koskolong.co.za>