



Adam Tas Corridor Energy

Cold and Hot Aisles in Micromodules





Overview

Aisle containment prevents hot exhaust air and cold supply air from mixing, improving the efficiency and consistency of data centre cooling. While advanced cooling systems like chilled water plants and CRAH units play a major role, one of the most effective strategies is much simpler: controlling how air moves through the data hall. So we look to factors other than the economics of efficiency to evaluate the relative merits of the two. ering various aspects, including energy efficiency and cooling ing effectiveness, and improve overall operational performance. Below are some key takeaways, rationale, and requirements for im date the evolving needs & configurations of colocation le containment is a crucial strategy in data center.



Cold and Hot Aisles in Micromodules



Data Center Hot and Cold Aisle: A Quick Guide

A data center hot and cold aisle is a strategic layout for organizing server racks to manage airflow and enhance cooling

What are hot and cold aisles in the data center?

In its simplest form, hot/cold aisle data center design involves lining



Hot Aisle Containment: Complete Guide to Data Center Cooling Efficiency

Learn hot aisle containment basics, benefits, and implementation. Reduce cooling costs 43% and improve data center efficiency with our complete guide.



Hot & Cold Aisle Containment Explained , AMCO Guide

Learn the science behind hot and cold aisle containment and how it improves airflow



management, cooling efficiency, and performance in modern data centers.

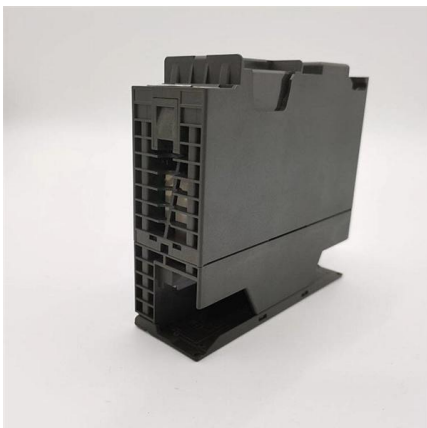


Hot/Cold Aisle Containment , AZE

Aisle containment is a cooling system that completely separates the cold supply airflow from the hot equipment exhaust air. This ultimately creates an even and

Single-Row Cold and Hot Aisle Containment

Figure 1-4 Layout of single-row cold and hot aisle containment Update Date:2025-06-30



Development of modular air containment system: Thermal

Herein, a prototype of modular air containment (MAC: full cold and hot aisle containment) system is proposed as row-based cooling to improve the thermal performance of high-density data



Cold & Hot Aisle Containment For Data Center Efficiency

Learn how cold and hot aisle containment improves airflow, reduces energy use, and boosts reliability in data centers. Backed by CFD insights from



Data Center Hot/Cold Aisle Containment Systems , Eaton

An aisle containment system is a simple way to improve cooling efficiency in hot aisle/cold aisle rack configurations. Essentially creating a room within the aisle,

FOCUSED COOLING USING COLD AISLE CONTAINMENT

While either hot aisle or cold aisle containment systems can be installed and are both capable of increasing efficiency and cooling today's high heat data centers, meaningful differences exist in how



Components of Single-Row Cold and Hot Aisle Containment

Components of Single-Row Cold and Hot Aisle Containment The components of single-row aisle containment include an enclosed framework, door components, and binding plates (or M-shaped



Hot Aisle vs Cold Aisle Containment Explained (Data Center Cooling)

Hot aisle vs cold aisle containment explained. Learn how airflow control improves data center cooling efficiency and reduces energy costs.



Explore hot and cold aisle containment for your data center

Hot and cold aisle containment can help you maintain the best air flow, temperature and humidity in the data center to keep servers running efficiently.

Hot and Cold Aisle Containment in Data Centers

Hot aisle containment encloses the hot aisles, directing hot exhaust air directly to the cooling units. Cold aisle containment, on the other hand, encloses





What is the standard distance between Hot Aisles and between Cold Aisle

When you consider current and future growth and rack dimensions what is the recommended or required distance for staff to have to work in a hot or cold aisle?

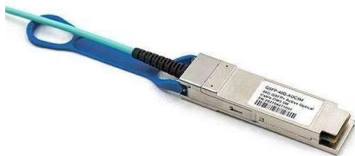
Hot vs. Cold H

best approach for aisle containment in data centers will be dictated conditions. At most sites, it is easier to implement containment solution because there are typically cable trays and other e hot aisle. It is



Hot Aisle vs. Cold Aisle Containment for Data Centers

Do you know the difference between hot and cold aisle containment systems? We will break it down for you.



A DEEP DIVE INTO THE WORLD OF HOT & COLD AISLE

OPERATIONAL ASPECTS OF HOT AND COLD AISLE CONTAINMENT ZONES Airflow Management: Utilize perforated tiles, grates, or directional vents to guide cold air to the server inlets and direct hot



Hot vs Cold Aisle Containment for Cooling , AMCO

Learn the key differences between hot and cold aisle containment and how they impact data center cooling.

Hot vs Cold Aisle Containment: 40% Cooling Savings

Discover how hot and cold aisle containment revolutionizes cooling efficiency, cuts energy costs by up to 40%, and extends equipment lifespan. |



Move to a Hot Aisle/Cold Aisle Layout

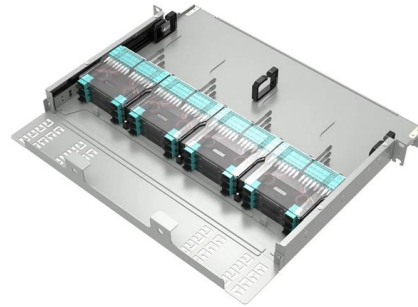
Hot aisle/cold aisle layout can still be used in server rooms without raised floors: distinct hot and cold aisles can be created by rearranging server rack locations





Aisle Containment Systems for Hot & Cold Aisle Solutions

Cool Shield Aisle containment solutions reduces server row temperatures in active data centers. Learn more about the benefits of hot and cold containment.



Hot and cold aisle in data center explained in simple terms

#datacenter #ccna #training #online
#education ? Master Cisco CCNA 200-301 with Industry expert Looking to deepen your skills in networking? Join my CCNA

Cut Cooling Costs with Hot & Cold Aisle Containment , STULZ

Discover how hot and cold aisle containment improves cooling efficiency, cuts energy costs, and supports uptime in modern data centres.



Hot and Cold Aisle , Effective Aisle Containment

Hot Aisle Containment The objective of the hot aisle containment data center is to enclose hot air masses and redirect them further to cooling systems.



What is hot/cold aisle in data centre

Hot/cold aisle is a layout design for server racks in a data center. The goal of it is to increase the effectiveness of cooling system by managing air flow



Hot and Cold Aisle Containment in Data Centers

Discover what hot and cold aisle containment is all about. Data centers are often made up of hot and cold aisles. Overall efficiency can be impacted by



Hot and cold aisle cooling containment

Hot and cold aisle cooling containment More frequently, data centers are using hot and/or cold aisle cooling containment solutions to help with managing airflow, eliminating hot spots and improving





Hot and Cold Aisle Containment: What You Need to

A cold aisle containment system is a budget-friendly option. Containing cold aisles is easy to do with an older space, whereas hot aisle

Hot Aisle Containment vs. Cold Aisle Containment:

This high rate of adoption has left a lot of people asking the same question: Is it better to contain the hot aisle or the cold aisle? A third party



Contact Us

For datasheets, pricing, or custom telecom energy solutions, please visit:
<https://www.koskolong.co.za>