



Adam Tas Corridor Energy

Columbia wall-mounted patch panel 6 cores inquiry





Columbia wall-mounted patch panel 6 cores inquiry



AMPCOM Premium Series CAT6 48 Ports Patch Panel, Rack Mount

AMPCOM Premium Series CAT6 48 Ports Patch Panel, Rack Mount - 2U, 19 inch, RJ45 Ethernet 568A 568B, 15u Gold Plated, with Rear Cable Support Bar

Populated Patch Panels

Our innovative Cat 6 flat punchdown patch panel delivers valuable performance, organization with clear labeling, and universal compatibility. Ideal for network



Legrand AV , On-Q WP246A Cat6a 24-Port Rack Mount Patch Panel

Uncover On-Q WP246A 24-port Cat6a patch panel with clear numbering and robust terminations as digital media demands grow. Explore more.

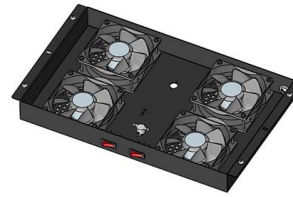


trueCABLE's 3D Cat6A Unshielded Wall-Mounted Patch

Discover trueCABLE's 3D Cat6A Unshielded Wall-Mounted Patch Panel, designed for 10Gbps

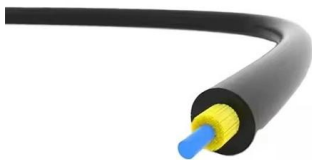


networks. Learn about its ANEXT mitigation, easy installation, and



ICC CAT6 Patch Panel, UL Listed & PoE++ Rated

HIGH-PERFORMANCE CONNECTIVITY: Wall-mounted CAT6 component-rated fixed patch panel with an 89D wall mount bracket, delivering excellent



Intellinet Cat6 Wall-mount Patch Panel (560269)

Wall-mount Patch Panel The Intellinet Network Solutions Wall-mount Patch Panel helps maintain the integrity of your data and enables you to quickly change the



SNAP Cu Compact Shielded CAT 6 Patch Panel Installation

System Description Compact DIN-Rail or surface mount shielded CAT 6 patch panel. The device's compact size allows minimum space requirements within control cabinetry. The SNAP Cu provides





Wall Mount Fiber Patch Panel, NEMA 3 Rated, Up to 6

Wall Mount Fiber Patch Panel, NEMA 3 Rated, Holds 1 Adapter Panel and 12 Splices, Up to 6 Ports. OC Series Wall Mount Fiber Patch Panels offer the same



Cat6 Patch Panels

4.5 (2) \$135.81 In stock ICC CAT 6 Front Access Patch Panel 12-PORT ICC's 12-Port Category 5e Front Access Patch Panels are designed to be wall and rack

Category 6 Patch Panels

Designed for mounting in standard EIA 19-inch racks or to hinged wall-mount brackets, their high-density, superior reliability and numerous labeling options make these patch panels a superior choice



Wall Patch Panels , Patch Panel Wall Mounts , CableWholesale

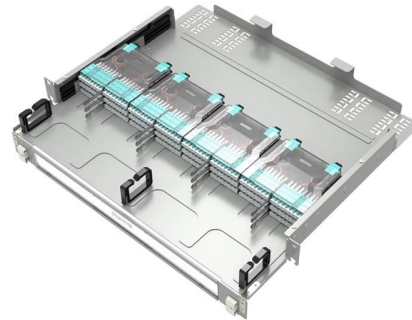
We carry a wide range of patch panel wall mounts that are compatible Cat5 and Cat6 ethernet cables and boast an excellent range of port options. Whether you need a 16- or 48-port patch panel, we're





Rack Mounted & Wall Mounted Fiber Patch Panel SC LC FC ST

We have a lot of options to fulfill your requirements, such as different adapter types, wall mounted & rack mount, 12 port, 24 port, 48 port, 72 port, 96 port and even 144 port. Let us help you maximize

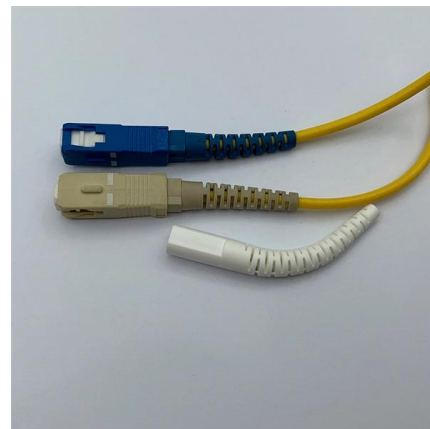


OEM 12 Cores Sc Upc ABS Fiber Patch Panel

Fiber patch panel is integrated units designed to secure and protect the cables inside the box, providing efficient fiber management solutions.

1U 24 Ports Cat 6 Patch Panels

FS 24 port Cat 6 patch panels, STP/UTP Cat 6 Patch panels, shielded or unshielded, Feed-Through or punch down, 1U rack mount patch panel, 50 micron golden



Buy Cat 5e, Cat 6a, Cat6, Networking Patch Panels , Cable Matters

Find the networking patch panels you need from Cable Matters! Check our big inventory, including [UL Listed] Rackmount or Wallmount 12-Port Cat6 RJ45 Patch Panel.



TRENDnet 8-Port Cat6A Shielded Patch Panel, Wall

TRENDnet's 8-Port Cat6A Shielded Wall Mount Patch Panel, model TC-P08C6AS, is ideal for gigabit and 10G Copper Ethernet network applications. This patch panel



iwillink 12-Port Mini Vertical Cat6 Patch Panel, 10Gbps

Broad Compatibility: Designed for heavy-duty use, this network patch panel supports Cat6 cabling and is backward compatible with Cat5e and Cat5 cables, ensuring

Cat6 Patch Panels

It offers the same Cat 6 performance as the standard panel but has been designed to present the cable termination IDCs horizontally on a tray at the rear of the panel, making termination and cable





ICC CAT6 Patch Panel, UL Listed & PoE++ Rated

Optimize your network's performance with ICC's 24-Port CAT6 Patch Panel, designed for high-speed Gigabit Ethernet applications. Built with durable 16

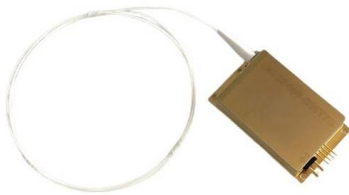
DP6(TM) Category 6 Punchdown Wall Mount Patch Panel, 12-Port

Shop DP6(TM) Category 6 Punchdown Wall Mount Patch Panel, 12-Port By Panduit (DP12688TGY) At Graybar, Your Trusted Resource For Copper Patch Panels And Other Panduit Products.



Rack Mounted & Wall Mounted Fiber Patch Panel SC

Rack Mounted & Wall Mounted Fiber Patch Panel SC LC FC ST for 12 24 48 72 96 cores Fiber Optic Patch Panels also called fiber optic termination box,can be



Category 6 24 Port TechChoice Flat Patch Panel, T568A/B, 1 RU Black

24- and 48-port TechChoice ® patch panels are available in the traditional multi-port panel format with 6-port modules for Cat6 and Cat5e. Patch panel kits are also available to support individual keystone



CAT 6 Patch Panels, Category 6 Patch Panels, 24 port CAT 6 panel,

HiPerlink 6(TM) Category 6 patch panels have been optimally designed to reduce crosstalk and maximize signal strength. ICC's HiPerlink 6(TM) patch panels have optimized spacing between port rows for

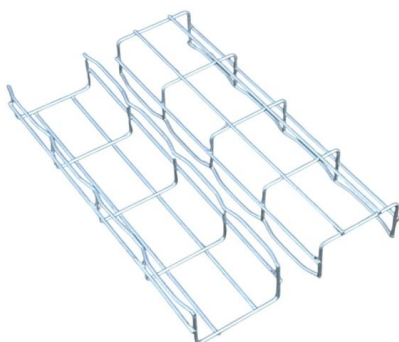
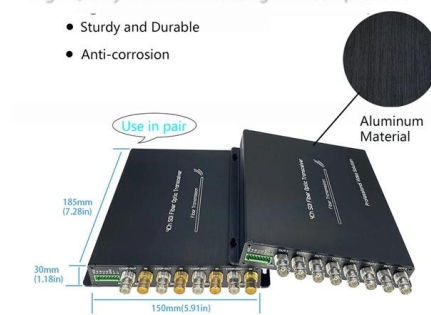


Patch Panels

Cat6, Cat5E Patch Panel Kit , 12 Port, RJ45, Wall Mount Patch Panel - includes Bracket, Termination Tool, Dry Wall Screws, Tie Wraps, Hook and Loop Strip

High Quality Aluminum Housing with Compact Size

- Sturdy and Durable
- Anti-corrosion



Wall-Mount Panel

The FX UHD and ECX modular platform of panels can be stacked vertically to create an interconnect while the patching spaces can be combined in a horizontal



Contact Us

For datasheets, pricing, or custom telecom energy solutions, please visit:
<https://www.koskolong.co.za>