



**Adam Tas Corridor Energy**

# **Common Problems with Customized Medium and Low Voltage Complete Sets of Equipment in the Dominican Republic**





## Overview

---

Voltage implications, including limited distance for power transmission and susceptibility to voltage drop, can create challenges in installation and maintenance. Generally, the useful life of power system components heavily depends upon the level of care given to them and their duty cycles. The majority of transformers at the utilities serve about 40 years if none of the. In this blog, we will explore 11 common causes of equipment failure and effective strategies to prevent them. Low voltage systems are increasingly prevalent in modern infrastructures, offering energy efficiency and safety in diverse applications.



## Common Problems with Customized Medium and Low Voltage Comp

---

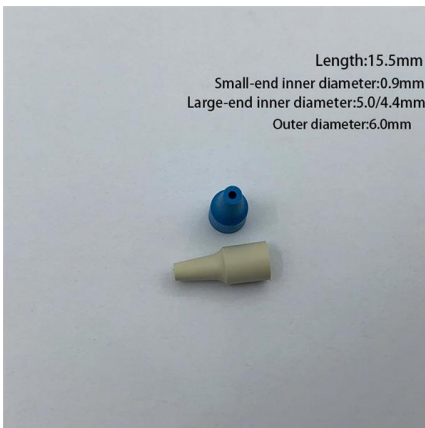
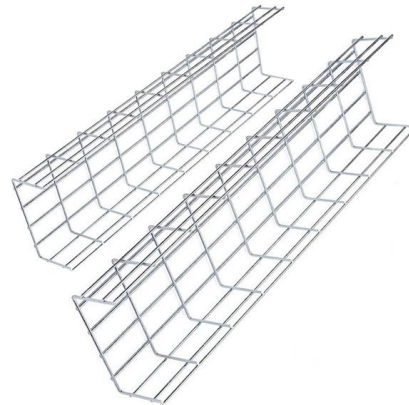
### Low Voltage Wiring: Complete Guide (Types, Costs)



Everything about low voltage wiring: types, costs, NEC code requirements, and safety tips. Updated for 2026.

### Low Voltage Electrical Installations: A Practical Guide

Whether you need guidance on equipment selection, process optimization or the implementation of new technologies, we are here to help you clear up any doubts



### Key Differences Between Low, Medium, and High

Compare low, medium-voltage switchgear components, and high voltage types by voltage range, design, safety, and typical applications for each

### The art of a low voltage switchgear design: The case

I indulged in the design field of the electrical low voltage distribution systems and have



accomplished more than 10 projects with the compliance of the



### The most common failure modes of electrical equipment

The following paragraphs in this technical article present the most common modes of failure for equipment that is most critical to distribution system

### Your questions answered: When and how to design low

Electrical system insights Electrical engineers should understand how to specify both low- and medium-voltage systems. NFPA 70: National Electrical



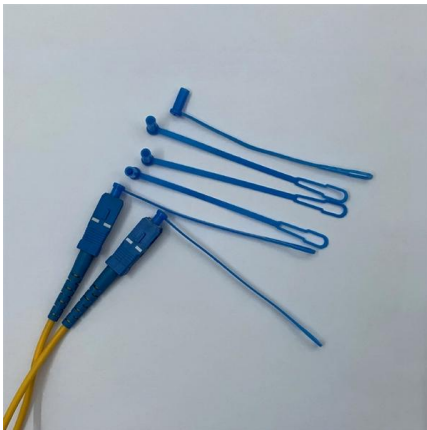
### What Are Low Voltage Systems? , VP Engineering

In this article, we share the fundamentals of low voltage systems, and help you better understand their importance, components, and applications.



## Medium Voltage: Complete Guide

Medium Voltage (MV) plays a critical role in global power distribution systems, bridging the gap between low-voltage consumer networks and high



## How to Overcome the Challenges of Manufacturing

In every industry across the board, customers are demanding customized products, and manufacturers must rise to the challenges. Regardless of how simple or

## Unlock Medium Voltage: The Definitive Guide You Need

Medium Voltage power systems, essential components within industrial facilities, operate in a voltage range above low voltage but below high voltage classifications. Understanding what is



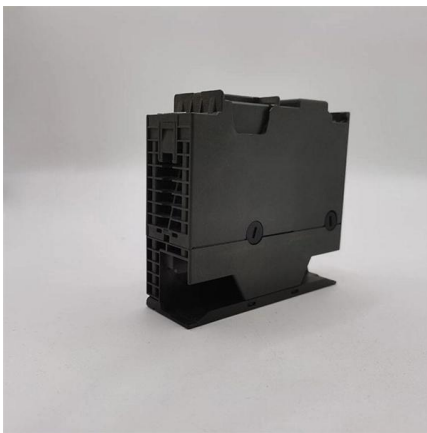
## Difference Between High, Medium, and Low Voltage

Explore voltage classifications (high, medium, low) and their impact on industrial generators. Discover how generators provide backup power at



## Avoid Common Low Voltage Wiring Mistakes in Network

To ensure successful low-voltage wiring installations, it's crucial to avoid common mistakes that professionals often encounter. In this blog, we'll



## Your questions answered: When and how to design low

Voltage is determined by the equipment requiring power. Another reason is the cost. This webcast on Dec. 8, 2022, left several questions open.

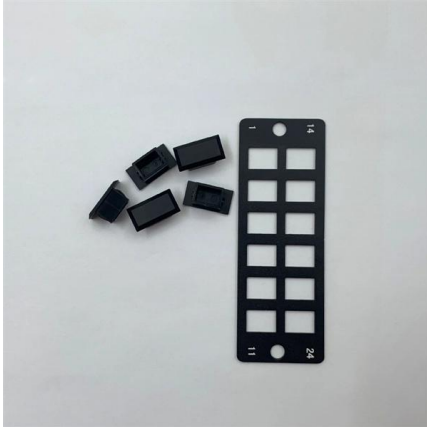
## Low Voltage Systems: What Are the Disadvantages of Low Voltage

Explore the disadvantages of low voltage systems and understand their implications. Learn about potential drawbacks such as increased risk of power loss, limited power distribution capabilities, and



## Basics in low voltage distribution equipment

Low voltage distribution equipment typically operates at less than 600 volts; in contrast, medium voltage equipment affords a wider range of 600 to 38,000 volts. This paper provides a basic overview of the



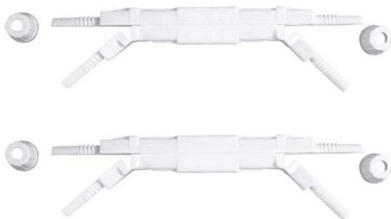
## All You Need to Know about Medium Voltage System

Key Takeaway Medium Voltage (MV) systems operate between 1kV and 69kV, bridging the gap between low and high voltage for efficient power



## Technical Management and Risk Prevention and Control of High and

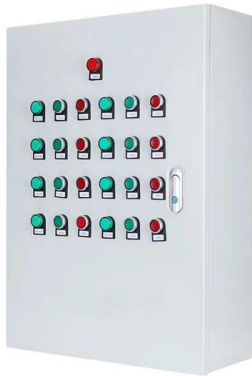
Abstract This paper comprehensively explores the technical management and risk prevention of high and low voltage complete sets of equipment in power engineering.



## The Eaton UPS and power management Fundamentals handbook

The VA or watt rating of your power loads is one of the most important factors in identifying the right UPS. After identifying the power environment (if the UPS needs to be single- or three





## Quality Low Voltage Design & Successful Installations

How does a quality low voltage design impact installations? And what happens to projects without an experienced technology consultant?

### 11 Common causes of Equipment failure & ways to

In this blog, we will explore 11 common causes of equipment failure and effective strategies to prevent them. By taking necessary precautions, businesses can



### Technical Management and Risk Prevention and Control of High and Low

This paper comprehensively explores the technical management and risk prevention of high and low voltage complete sets of equipment in power engineering. It elaborates on technical

### Common problems in medium voltage switchgear

After knowing what the switchgear is, it's obvious that we don't want to lose it. So knowing the problems that usually switchgears have is very important to be able



### **Low Voltage Switchgears : 7 Shocking Mistakes to Avoid**

So, we decided to put together this guide to highlight the most common mistakes professionals make and how you can avoid them. Because in the world of electricity, a small mistake can have a



### **Analysis of complete sets of high and low voltage electrical equipment**

As an important type of electrical device, complete sets of electrical equipment belong to the category of electrical equipment, similar to switches, contactors, circuit breakers, and



### **Low voltage power distribution troubleshooting guide**

This comprehensive guide explores the most common LV power distribution problems and provides practical troubleshooting solutions that





## Review of Medium-Voltage Asset Failure Investigations

This paper sets out to sample the results of multiple forensic analyses, determine the common causes of cable failures, and identify what users can do to have accurate information on the status of their



## Contact Us

---

For datasheets, pricing, or custom telecom energy solutions, please visit:  
<https://www.koskolong.co.za>