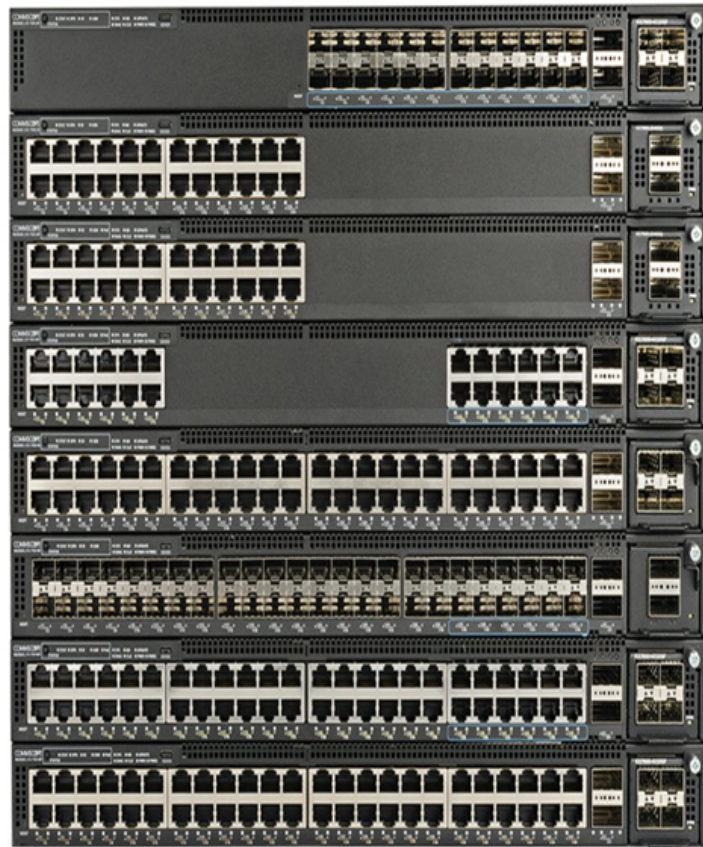




Adam Tas Corridor Energy

Commonly used 10GE optical modules in Huijie equipment





Commonly used 10GE optical modules in Huijue equipment

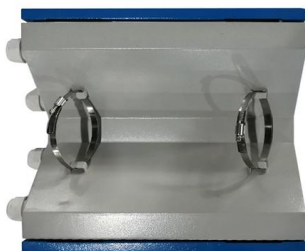
Types of sfp models and their applications , ??????



All are compatible with Multi-Source Agreements (MSAs) to support interoperability between equipment from different vendors. The difference

10GE SFP+ Optical Modules

Single-fiber bidirectional (BIDI) optical modules must be used in pairs. For example, SFP-10G-BXU1 must be used with SFP-10G-BXD1.



What is 10 gigabit ethernet standard?

This guide will explain 10 gigabit ethernet computer standard and detail the kinds of interfaces, optical fiber, and port types involved.

01-10 OPTICAL MODULES

Classified by transmission rates Depending on transmission rates, optical modules are classified into 100GE, 40GE, 25GE, 10GE, FE, and GE



optical modules. Classified by encapsulation types The

190X95X25mm



01-10 OPTICAL MODULES

Optical modules are available in various types to meet diversified requirements. Depending on transmission rates, optical modules are classified into 100GE, 40GE, 25GE, 10GE, FE, and GE

Fiberworks Data Sheet

The SFP-10GE transceiver family are small form factor pluggable modules for bi-directional serial optical data communications such as 10GBASE Ethernet. The modules are compliant to the SFP+ MSA and



ES5D000X4S01 (4-Port 10GE SFP+ Front Optical Interface Card)

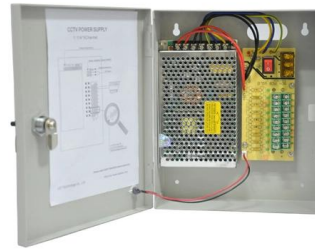
Card Overview The ES5D000X4S01 provides four 10GE SFP+ optical ports for data access and line-rate switching. It can be installed in a front card slot of the switch models listed in Table 9-10.





Understanding Pluggable Optical Modules

Therefore, when using such optical modules, select optical fibers of an appropriate length to ensure that the actual receive power is smaller than the overload power. If the optical fibers connected to a long



Understanding Optical Modules

The transmit power of a long-distance optical module is often larger than its overload power. Therefore, when using such optical modules, select optical fibers of an appropriate length to ensure that the

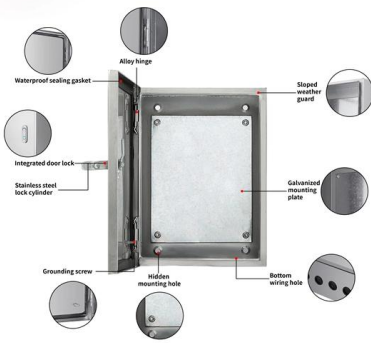
10 Gbit/s SFP+ Optical Module

You can use different levels of 10 Gbit/s SFP+ optical modules only with 10 GE interfaces. The wavelength of these 10 Gbit/s SFP+ optical modules can be 850 nm, 1310 nm, or



The Complete Guide to the Best Choice of 10G SFP

Application Scenarios of 10G SFP+ Optical Modules Data Center Networks Data centers require high-speed and reliable connections to handle massive amounts



10GE SFP+ Optical Modules

SFP-10G-ER-1310 Table 7-33 SFP-10G-ER-1310 specifications



What Are SFP Transceiver Modules? , 1G & 10G Networking

What Are SFP Transceiver Modules? SFP transceiver modules are compact, hot-pluggable optical modules used to transmit data over fiber optic networks. They are commonly installed in switches,

Optical Modules for Huawei S Series Switches

A switch must use optical or copper modules that have been certified for use on Huawei switches. Non-certified optical or copper modules cannot ensure transmission reliability and may affect service





Which 10G Optical Modules are Data Centers Often Using?

Optical modules play an important role in the information transmission process of the data center. In this article, we will introduce common



Types of Optical Modules

Multimode optical modules are used together with multimode optical fibers. Multimode fibers have lower transmission performance than single-mode fibers because of modal dispersion, but their costs are



Which Optical Modules Are Commonly Used In 4G Base

In this blog, ETU-LINK will talk about 4G base stations and common types of optical modules. The base station can be divided into two modules: the RRU for



10GE SFP+ Optical Modules

This document describes hardware components of the S9700, including the cabinet, chassis, power supply facilities, fan modules, cards, cables, and pluggable modules for interfaces.



Unlocking the Potential of 10GBASE-SR Optical

Explore the world of 10GBASE-SR optical transceivers with our Cisco-compatible guide. Discover SFP modules that offer 10G Ethernet



SFP-10g-Er-1310 Huawei 10ge SFP+ Optical Modules

Note: If the SFP-10G-ER-1310 is connected to a 10Gbase-ER standard optical module (1550 nm, 10GE, 40 km), the maximum transmission distance is only 20



Overview 10G SFP+, X2, XENPAK SFP+ and XFP

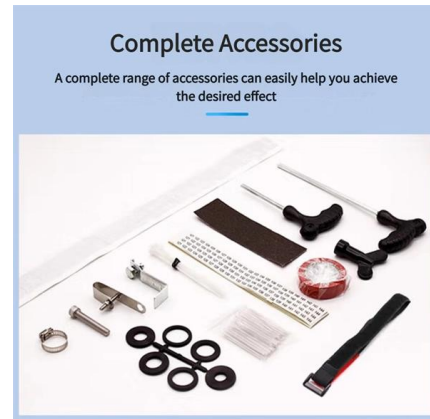
The XFP (10 Gigabit Small Form Factor Pluggable) is a standard for modules for high-speed network and telecommunication links that use optical fiber. XFP





Understanding Optical Modules

Optical modules are available in various types to meet diversified requirements. Classified by transmission rates Depending on transmission rates, optical modules are classified into 100GE,



2X10GL (2-Port 10GE Optical Ports Interface Card)

Card Overview The 2X10GL is a high-speed WAN access module that provides two 10GE optical interfaces for high-speed uplink connection. A 2X10GL card can be installed in a WSIC or XSIC slot

Types of Optical Modules

They are used for small-capacity, short-distance transmission. Wavelength division multiplexing modules differ from other optical modules in center wavelengths. A common optical module has a center



1 Gbit/s SFP Optical/Electrical Modules

1 Gbit/s SFP Optical/Electrical Modules 1 Gbit/s SFP optical/electrical module apply to GE interfaces for interconnection between GE optical and electrical interfaces.



Huawei GE Optical Modules

Buy genuine Huawei GE optical modules from GenuineModules with best price and fast worldwide shipping.



Overview 10G SFP+, X2, XENPAK SFP+ and XFP

The SFP+ module form factor is around 30% smaller, uses less power, requires fewer components, and is cheaper than the 10-Gigabit small form-factor

Types and Applications of 10G, 40G, 100G Optical Modules

Introduce the types and applications of 10G, 40G, and 100G optical transceivers.



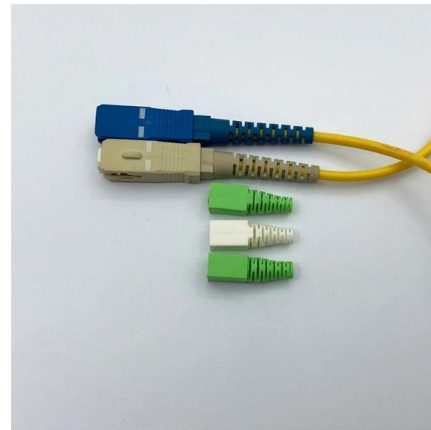
10 Gbit/s SFP+ Optical Modules

10 Gbit/s SFP+ optical modules apply to 10 GE optical ports. The wavelength can be 850 nm, 1310 nm, or 1550 nm, and the transmission distance ranges from 0.5 km (0.31 mi) to 80 km (49.71 mi).



Types and Applications of 10G, 40G, 100G Optical Modules

100G optical modules are used to connect cloud servers, virtual machines and network devices to achieve fast data transmission and network connections. It is widely used in data centers,



Types of Optical Modules

Multimode optical modules are used with multimode fibers. Multimode fibers have lower transmission performance than single-mode fibers because of modal dispersion, but their costs are also lower.

Inventory Of 10G Optical Modules

SFP+ optical modules are widely used in 10G Ethernet due to their advantages of compact size, low cost and high density, and they are currently the most common 10G optical



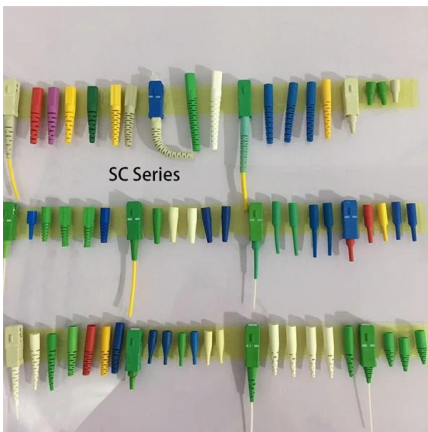


Understanding Optical Modules

Optical modules are available in various types to meet diversified requirements. Classified by transmission rates Depending on transmission rates, optical modules are classified into 10GE and

10G Optical Module Overview

This article mainly describes the main application scenarios of 10G optical modules and the main advantages of 10G SFP+ optical modules currently on the market. By reading this article,



Huawei 10GE Optical Modules

Buy genuine Huawei 10GE optical modules from GenuineModules with best price and fast worldwide shipping.

Contact Us

For datasheets, pricing, or custom telecom energy solutions, please visit:
<https://www.koskolong.co.za>