



**Adam Tas Corridor Energy**

# **Comparison of the weight of communication towers**





## Comparison of the weight of communication towers

---

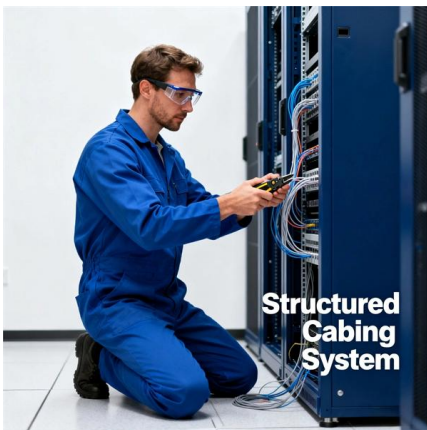


### How Tall Is A Communication Tower?

These towers play a crucial role in facilitating wireless communication, broadcasting, and other forms of signal transmission. One of the

### FRACTURE TOUGHNESS OF IGNALINA NPP STEAM

For the purpose of a comparison, six different planar-truss topological designs were investigated, where the influence of various loads on the structure was observed. The towers were designed for



### Estimating the Optimum Weight for Latticed Power

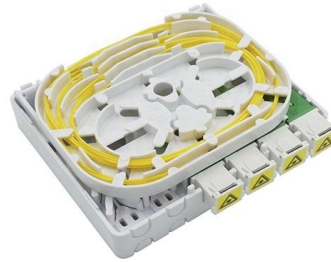
The recent expansion of power-distribution networks has motivated many researchers to study how to minimize the costs of such projects. Although

### Different Types of Telecom Towers: Which Design is

Self-Support Towers Self-support towers offer the most possibilities compared to other types of



telecom towers and are considered appropriate for

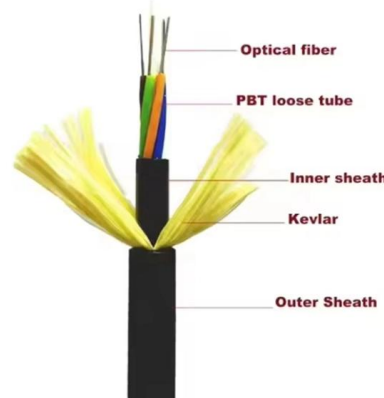


### Types of Communication Tower in Telecom

2. Structural & Design Specifications Antenna Load Area: The number, size, weight, and wind load of antennas dictate the tower's required

### Microsoft Word

Communication towers are generally pin jointed space frames built of steel sections for holding transmitters and receivers. In addition to self-weight, wind forces are critical for these towers.



### Comparative study of wind and ice loads on telecommunication towers

A comparison statement is derived on effect of ice loads on analysis of structure - leg forces, bracing forces and deflection for tower configuration considered in parametric study. Keywords:



## Design of Communication Tower and Its Performance

three codes BS 8100, ASCE 7-05 and MS 1553:2002. This comparison is to find out which code provides the most critical condition for the tower's performance. Some literatures review are done in



## Analysis and Design of a Steel Communication Tower

Abstract-- The purpose of this paper is to analyze and design a steel communications tower using the Etabs program, and calculate the lateral loads for this tower according to the British code BS3699

## Sage Journals: Your gateway to world-class journal research

Hier sollte eine Beschreibung angezeigt werden, diese Seite lässt dies jedoch nicht zu.



## A Comparative Study on the Calculation of Wind Load and Analysis of

It is also important to mention here that this study is limited to the comparison of member axial forces under dead+wind load combination. The addition of any other forces might affect the



## Parametric comparison of communication towers with

Communication towers are generally pin jointed space frames built of steel sections for holding transmitters and receivers. In addition to self-weight,



## A Comparative Study on the Calculation of Wind Load and Analysis of

The main objective of this study is to provide guidelines for wind load calculation on tower body, appurtenances and other structures and to compare the member axial forces induced by the

## A Field Guide To The North American Communications

AM radio and other low-frequency towers fall into this category. In this article, I'm going to focus on a particular species of communications tower -- the



- ✓ 50KW/100KWH
- ✓ HIGHER POWER OUTPUT IN OFF-GRID MODE
- ✓ CONVENIENT OPERATION & MAINTENANCE
- ✓ PRE-WIRED



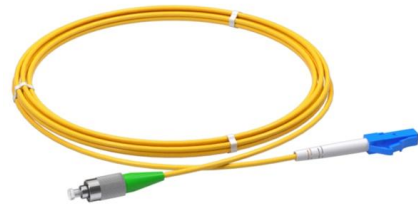
## 646-653 23. [20-662].fm

The main objective of this study is to provide guidelines for wind load calculations on tower body, appurtenances and other structures and to compare the member axial forces induced by the wind



### Comparison of Communication Tower Bracings

This study presents a parametric comparison of four-legged communication towers with different bracing systems, focusing on their design under various wind



Height and Load-Bearing Capacity: The tower's height must be sufficient to provide adequate coverage for the intended area, and it should be able to support the

### Optimum Selection of Communication Tower Structures Based on

Therefore, the optimum selection of the tower structure so that it sustains high wind speeds and is economically feasible is crucial. Many researches have proposed different adjustments to tower



## A Comparative Study on the Calculation of Wind Load and

The Telecommunications Industry Association (TIA) is responsible to provide recognized literature for the analysis & design of communication towers. TIA in 2005 released a standard "TIA

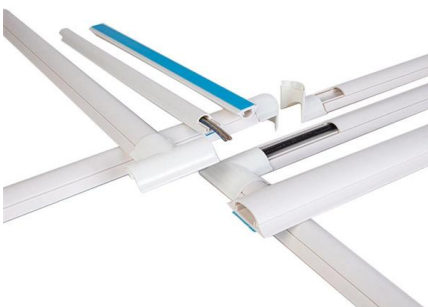
## Analysis of Telecommunication Tower with Different Bracing System

Towers are subjected to gravity loads and horizontal loads. The higher the structure, the more it is exposed to lateral loads such as wind load, since it has higher tendency to sway.



## Calculation model (a) and actions of the tower

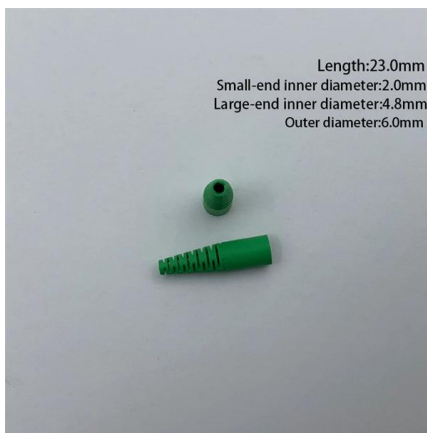
Download scientific diagram , Calculation model (a) and actions of the tower: selfweight (b), antenna self-weight load (c), wind antenna load (d, e) from





## Design and Analysis of Telecommunication Tower

The change in weight when height increases from 30m to 40m is about 41.07% and from 40m to 50m is 26.02%. Weight is maximum for X-bracing and minimum for K-bracing for the same tower height.



## How to Choose the Right Type of Communication Tower

Discover how to choose the right communication tower for urban, rural, and special environments. Learn the differences between monopole, lattice,

## Analysis of communication tower with different heights subjected to

This study gives a comparative analysis of two ANSI/TIA standards (222-G & H) that are commonly used for the analysis and design of communication towers, poles, antennas, and supporting



## What Are Communication Towers and How Are They Designed?

Part 1: Purpose of Communication Towers  
Communication towers are tall steel structures used to raise antennas to higher elevations in order to extend service coverage and



## Contact Us

---

For datasheets, pricing, or custom telecom energy solutions, please visit:  
<https://www.koskolong.co.za>