



Adam Tas Corridor Energy

Complete Guide to Metal Cable Tray Specifications and Dimensions





Complete Guide to Metal Cable Tray Specifications and Dimensions

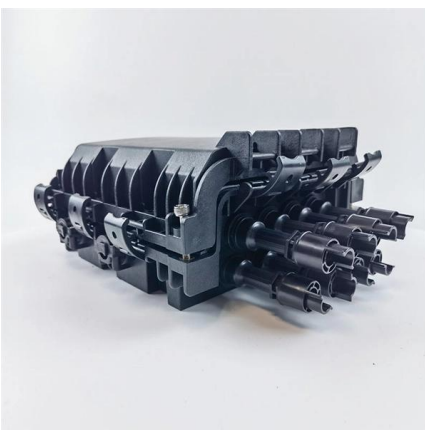
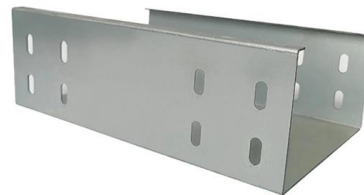


26 05 36 Cable Trays for Electrical Systems

EATON B-LINE SERIES GUIDE SPECIFICATION
Section 26 05 36 - CABLE TRAYS FOR
ELECTRICAL SYSTEMS 26 05 364/2025 Specifier
Notes: This product guide specification is written

LEGRAND CABLE TRAYS TECHNICAL GUIDE

Not all cable trays are equivalent. The mechanical and electrical characteristics, tests, certifications, overall quality management, recommendations mentioned in this technical guide only apply to our



Cable Tray Dimensions Guide: Standard Sizes, Tray

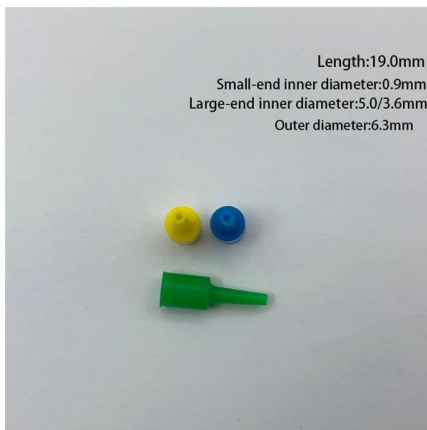
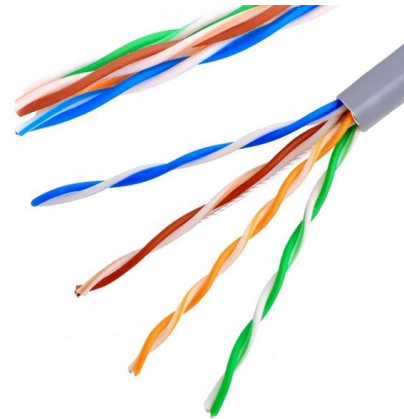
Explore standard sizes by tray type, understand width and depth limits, and see how to calculate and choose compliant cable tray sizes for real projects.

Product Specifications: CABLE TRAY

FDG CABLE TRAY FDG Cable Tray is designed to continuously support cable systems including; Power, Data, and Audio Visual. A quick and easy



system to install without the need for specialised

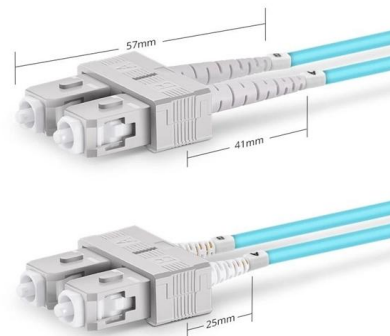


Cable Tray Technical Guide A practical guide to product selection and

This guide for engineers and installers has been developed by ABB as a practical reference regarding cable tray characteristics, installation, and requirements.

cable tray technical specifications

Armorduct cable tray systems are usually assembled using M6 roofing bolts particularly for couplers, fishplates and connection to supporting framework. It should be noted that independent testing has



Duplex SC UPC

Cable Tray Size Choosing: Key Factors for Electrical

However, selecting the ideal tray size requires a thorough understanding of various factors, including cable types, quantities, specifications,





SWIFTS CABLE TRAY

Legrand Complete cable management solutions
Using its global strength and market leading position, Legrand has developed a complete range of cable management solutions, including:
- Swifts cable



Cable Tray Size Guide: How to Choose the Right Dimensions

Complete cable tray sizing guide with standard size chart, NEC calculation methods, and real engineering examples. Learn how to select the right cable tray dimensions for your project.

CABLE TRAY SYSTEMS GUIDE

Hubbell's NEXTFRAME® Ladder Tray is the effective and widely used cable runway that supports and delivers bundles of cable between cabinets, racks, and closets, along walls, and suspended from



Cable Tray Specifications and Layouts

The document provides specifications for cable trays, cable ladder, supports, galvanized conduit, and accessories. It includes dimensions and quantities for



Cable Tray Size and Dimensions: How to Choose the

Learn how to calculate the perfect cable tray size and dimensions for your electrical project. This guide covers load capacity, fill ratios, and industry



Full cable tray systems specification document

B. Cable tray systems are defined to include, but are not limited to straight sections of [ladder type] [trough type] [solid bottom type] [channel type] cable trays, bends, tees, elbows, drop-outs, supports

IEC Standard for Cable Tray: Complete Technical Guide

IEC Standard for Cable Tray: Complete Technical Guide The International Electrotechnical Commission (IEC) provides detailed guidelines for





GUIDE CABLE TRAYS TECHNICAL

Specifies requirements for metal cable trays and associated fittings designed for use in accordance with the rules of Canadian Electrical Code, Part I and the National Electrical Code®

Cable tray manual

INTRODUCTION The B-Line series Cable Tray Manual was produced by our technical staff. We recognize the need for a complete cable tray reference source for electrical engineers and designers.



CABLE MANAGEMENT SYSTEMS CABLE TRAYS & ACCESSORIES

Cable Trays are designed to meet most requirements of cable and electrical wire installations and comply to local and international standards of fabrications and finishes.

Full cable tray systems specification document

The work covered under this section consists of the furnishing of all necessary labor, supervision, materials, equipment, tests and services to install complete cable tray systems as shown on the



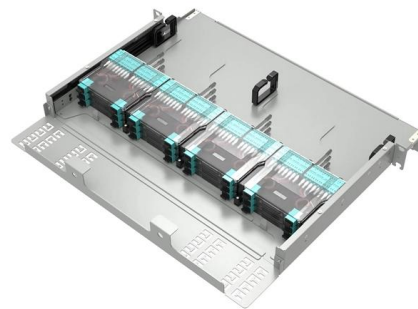
LEGRAND CABLE TRAYS TECHNICAL GUIDE

Specifies requirements for metal cable trays and associated fittings designed for use in accordance with the rules of Canadian Electrical Code, Part I and the National Electrical Code®



LEGRAND CABLE TRAYS TECHNICAL GUIDE

In accordance with its continuous improvement policy, Legrand reserves the right to change the specifications and illustrations without notice. All illustrations, descriptions and technical information



Cable Tray Dimensions and Specifications as per NEC

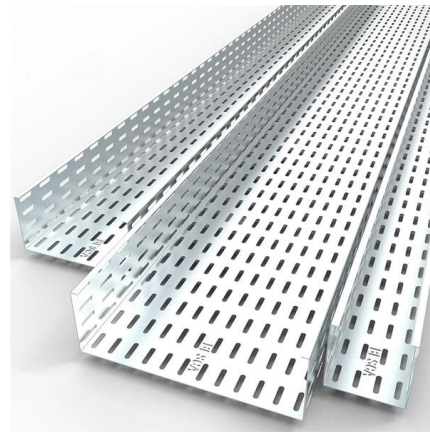
Many electrical systems employ cable trays. They route cables safely & efficiently. NEC defines minimum cable tray size & electrical installation





CABLE TRAY SYSTEM

ICMS cable tray system including Fittings and accessories is manufactured With return flange in a standard length of 2.44Mtr and 3 Mtr, according to the following Specifications and standards:



Eaton Cable Tray System Specifications

EATON_full-cable-tray-specification-document - Free download as PDF File (.pdf), Text File (.txt) or read online for free. This document outlines the specifications for

Cable Tray Specifications and Sizes , PDF

The document specifies requirements for cable trays, including that they be fabricated from galvanized sheet steel in standard lengths and widths. It provides



Contact Us

For datasheets, pricing, or custom telecom energy solutions, please visit:
<https://www.koskolong.co.za>