



**Adam Tas Corridor Energy**

# **Conductive Dust Distribution Box**





## Conductive Dust Distribution Box

---

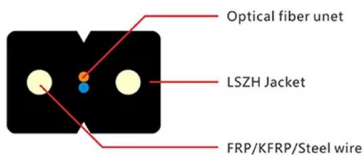
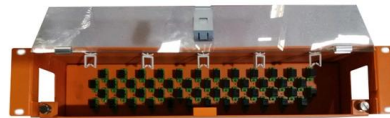


### Installing Electrical Equipment in a Combustible Dust

A Class II, Division 2 location is a location where combustible dust is not normally in the air in quantities sufficient to produce explosive or ignitable

### Distribution Box

The IDE IP65 distribution boxes are designed to provide robust protection for electrical components in various environments, ensuring durability, visibility, and

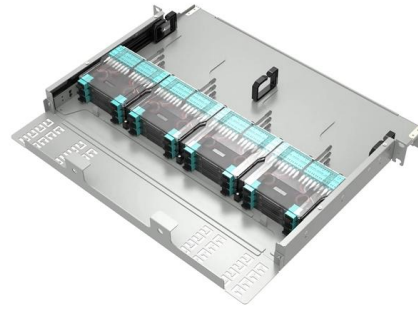


### Distribution boxes - For modular and decentralised

Modern automation solutions are becoming increasingly decentralised. As a result, you need distribution systems that can be easily integrated into the common

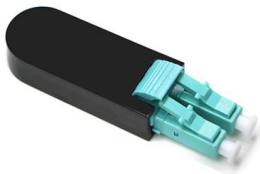
### Explosion Protection Poster

IIIC non-conductive dust conductive dust  
fibres/flyings non-conductive dust carbonaceous  
dust Class III Class II, Group G Class II, Group F



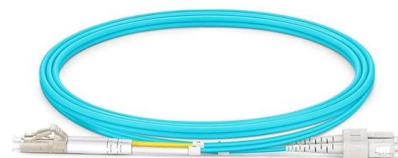
### Dust Proof Electrical Motors

Description Dust-proof electric motors are used in industrial plants with a potentially explosive dust atmosphere, containing conductive dust, non-conductive dust and combustible flyings). The



### Dust Proof Electrical Motors

Dust-proof electric motors are used in industrial plants with a potentially explosive dust atmosphere, containing conductive dust, non-conductive dust and combustible flyings). The enclosures of electric



### 4GA to 8GA Ground Distribution Box

Transparent Dust Cover: Equipped with a transparent protective cover to prevent conductive dust from entering while maintaining internal visibility. 4GA to 8GA Adapter: Utilizes a



## How to Install a Cable Distribution Box Safely and

In modern electrical systems, cable distribution boxes (also known as electrical distribution boxes or distribution boxes) play a crucial role as the key

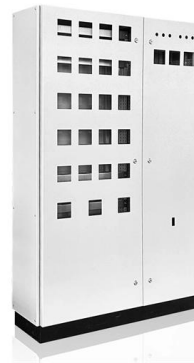


## small distribution boxes , DISTRO-DIRECT

DISTRO-DIRECT powered by INDU-ELECTRIC offers a wide range of small distribution boxes. Our small distribution boxes in the type 10 and type 11 series,

## Understanding NEC Article 502

Master hazardous location wiring with Understanding NEC Article 502: The Strategy. Learn the critical safety rules for Class II combustible dust environments.



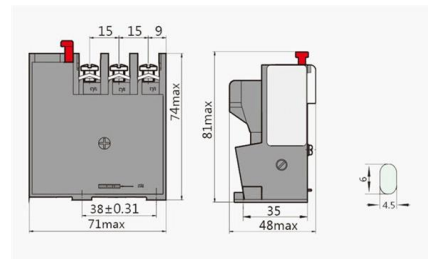
## Dust in Electrical Equipment: A Hidden Hazard

This fire can spread from one dust particle to the next, burning through an entire room full of suspended dust particles in a matter of moments.



## Distribution Boxes

Distribution Boxes at CPC. Competitive prices from the leading Distribution Boxes distributor. Check our stock now!



## The Complete Guide to Distribution Box: Installation, Types & More

Blog The Complete Guide to Distribution Box: Installation, Types & More By Admin Aug 2, 2025  
No Comments # distribution box Introduction  
Electrical systems power our homes, offices, and

## CHICIRIS 411 Terminal Block Distribution Box, 4 Level Din Rail

[Effortless Installation] Designed for quick din rail mounting, this terminal block box simplifies setup in electrical engineering applications. the universal rail compatibility ensures fast deployment in





## 1. An Ultimate Guide for Metal Distribution Boxes

3) Weatherproof Distribution Boxes Designed to withstand harsh outdoor conditions, protecting electrical connections from rain, dust, and extreme temperatures.

### Ground Distribution Box for Automotive Audio Systems 4GA Input

Transparent Protective Cover: Clear dust-resistant cover allows real-time visual inspection of connections while blocking conductive debris from compromising safety. 4GA Input to 8GA Output:



### Guidance note QGN 34: Managing dust ingress into electrical

Preventing dust entry into electrical enclosures through design (Engineering) - preventing dust entering the enclosure through Ingress Protection (IP) rating and/or through pressurisation / filtration systems.

### BXM (D)

The product body cover is joined with a curved dust tight structure, and the sealing strip adopts advanced technology of one-time molding with cast-in-place foaming, which has strong waterproof



### Dirty Panels Can Short-Circuit - Clean Them with

Dust is often made up of tiny conductive particles. When it settles on circuit boards or terminals, it can cause arcing, overheating, or false connections.



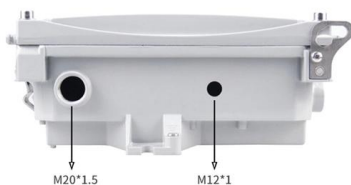
### Anti

The Dusty pressurization Series is designed for environments full of dirt, airborne dust, and for installation in corrosive environments. Our enclosures system AISI



### Power Distribution Boxes Explained Simply

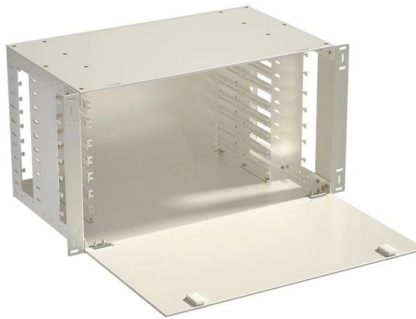
Learn what a power distribution box is, how it works, key components, types, and why it's vital for safe and efficient electrical systems.





## Versatile dust distribution box Items

Give your products an elegant appeal with sublime dust distribution box from Alibaba . These dust distribution box are offered at mouthwatering prices.



## How to prevent condensation in electrical enclosures

Learn how to keep electrical enclosures warm and dry to prevent condensation, protect devices, and ensure long-lasting electrical safety.

## Electrical equipment suitable for dust explosion risk :

Electrical equipment used in areas where a dust explosion risk exist must be designed and certified according to the relevant local norms, for example ATEX



## Installation requirements for distribution boxes

Distribution boxes shall be made of non-combustible materials; open distribution boards may be installed in production places and offices with low electric shock risk; enclosed cabinets shall



### **Conductive Containers , Crestline Plastics**

Conductive Containers & Crestline Plastics provide ESD-safe packaging for high-value components and optics, solutions designed to protect parts from ESD & FOD.



### **Ex Local Control & Distribution Boxes Contrex · Atex**

Atex Delvalle produces local control stations and distribution boxes and enclosures for use in hazardous areas with flammable gases and dusts.



### **Ex Local Control Stations & Distribution Boxes · Atex**

Atex control stations, explosion protected control units and distribution boxes made stainless steel maritime grade AISI 316L or AISI 304L. Atex Delvalle provides a





## Contact Us

---

For datasheets, pricing, or custom telecom energy solutions, please visit:  
<https://www.koskolong.co.za>