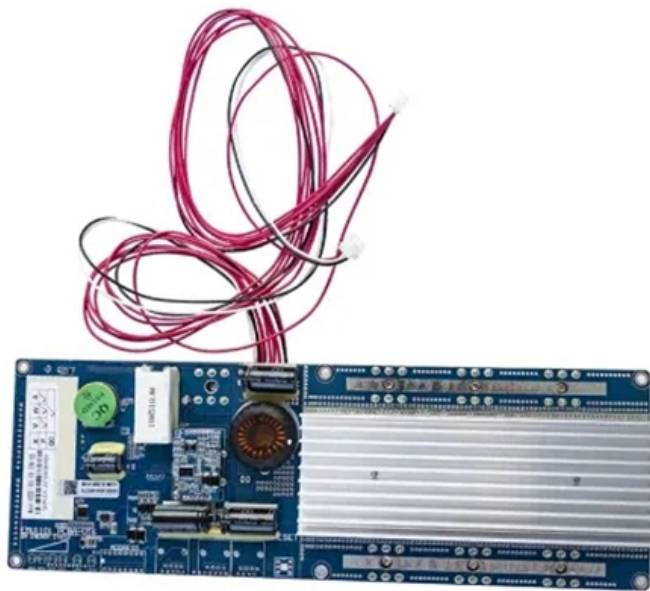




Adam Tas Corridor Energy

Configuring LCP for Huijue Core Switch





Configuring LCP for Huijue Core Switch



What is Link Control Protocol (LCP) and what is it used for?

Learn how Link Control Protocol (LCP) control signals enable Point-to-Point Protocol (PPP) to establish, configure and test connections.

LACP configuration (Huawei)

LACP configuration on Huawei switch. This mode can implement both load balancing and redundancy. Static and dynamic mode configuration.



[Enterprise Switch] How to configure Link Aggregation on Edgecore

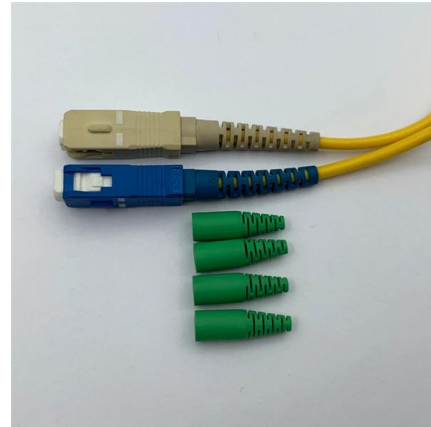
Edgecore enterprise switches' ports can be statically grouped into an aggregate link (i.e., trunk) to increase the bandwidth of a network connection or to ensure fault recovery. Or you can use the Link

CX320 Switch Module V100R001 Configuration Guide 15

Configuring Link Aggregation in Manual Load Balancing Mode Link aggregation implements



load balancing, increases bandwidth, and improves transmission reliability.



Huawei Switch Basic and lACP Configuration

VLAN creation, Trunk and Access ports on Huawei Switches How to Connect to a Cisco Switch Using Putty (CCNA) How to do Starting Configuration of Huawei Ethernet Switch S5735

Aggregated Ethernet LACP for Switches , Junos OS , Juniper Networks

Learn about aggregated Ethernet LACP, and how to configure LACP and LACP link protection. What is LACP? Link Aggregation Control Protocol (LACP) is a method for bundling



ECS2100 Series CLI Reference Guide

Section III "Appendices" -- Includes information on troubleshooting switch management access. This guide focuses on switch software configuration through the CLI. For information on how to manage



Huawei switch configuration for LACP

LACP configuration in Huawei Switch #switch Link aggregation configuration in Switch #huawei Let's help to make 1000 subscribers ? Huawei Switch Configurati



LACP in Huawei Switch

In this comprehensive video, we delve into the intricacies of Link Aggregation Control Protocol (LACP) on Huawei switches.

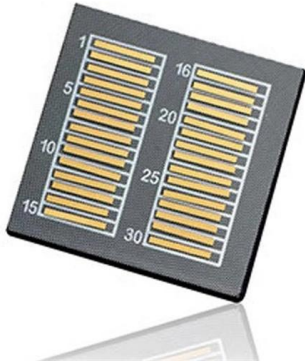
Configuring Link Aggregation in LACP Mode

S5700 and S6700 V200R025C00 Configuration Guide - Ethernet Switching This document describes the configuration of Ethernet services, including configuring MAC address table,



Typical DHCP Configuration

S300, S500, S2700, S3700, S5700, S6700, S7700, and S9700 Series Switches Typical Configuration Examples (V200) This document provides campus networks typical configuration examples and



Network Switches , Huawei Enterprise

Huawei Ethernet Switches Turbocharge your enterprise network with high-performance, high-availability for resilient services and simplified management.



Introduction to Core Switch Configuration

A switch that functions as part of a router and operates at the third layer of the OSI network standard model, the network layer. The most important purpose of the layer 3 switch is to speed up the data

Configure LACP on CISCO switch (PRACTICAL GUIDE)

Easily configure LACP (802.3ad) on CISCO switches Link Aggregation Control Protocol (LACP) LACP Modes 1. active 2. passive Port Aggregation Protocol (PAgP) PAgP Modes 1. auto 2. desirable **** SW1





"Gateway + Core Switch + Access Switch + WAC + AP" Networking:

"Gateway + Core Switch + Access Switch + WAC + AP" Networking: S380 Local Entire Network Deployment Application Scenarios and Networking Requirements Device Model Selection



how to configure cisco core switch HSRP active active

In this video we will learn how to configure cisco core switch active active using HSRP step by step. In this LAB we practice on creating vlan, distribute vlan to other switch in our network



Huawei Core-Switch S6730-S24X6Q Full Configurations For Asa

Huawei Core-Switch S6730-S24X6Q Full Configurations For Asa Technology Asa Technology 2.64K subscribers Subscribe



S600-E Series Switches Typical Configuration Examples

Figure 5-6 Networking diagram for configuring link aggregation in LACP mode. The configuration roadmap is as follows: Create an Eth-Trunk and configure the Eth-Trunk to work in LACP mode to



SME Network Solution Typical Configuration Examples

"Gateway + Switch + AP" Networking: Local Entire-Network Deployment (EasyWeb) "Gateway (S380) +Core Switch +Access Switch +AP" Networking: Huawei eKit Cloud Management



Native AC + Policy Association Solution: Core Switches Function as

Policy association is deployed between core switches and access switches. The core switches function as control devices to centrally authenticate users and manage user access policies, and access



The TCP/IP Guide

Key Concept: The PPP Link Control Protocol (LCP) is the most important protocol in the PPP suite. It is responsible for configuring, maintaining and terminating the



S5700 and S6700 V200R024C10 Configuration Guide

LACP provides a standard negotiation mechanism that a Huawei switch can use to create and enable the aggregated link based on its configuration. After an aggregated link is formed, LACP is



What Is LACP? How Does LACP Work?

This chapter defines Link Aggregation Control Protocol (LACP), introduces related concepts, and provides configuration examples. LACP is a basic feature of Huawei data communications products,

Configuring Link Aggregation in LACP Mode

This document describes the configuration of Ethernet services, including configuring link aggregation, VLANs, Voice VLAN, VLAN mapping, QinQ, GVRP, MAC table, STP/RSTP/MSTP,





Configuring Link Aggregation in LACP Mode

Configure the static or dynamic LACP mode. When the two directly connected devices support LACP, static LACP is recommended. The Eth-Trunk is configured to work in static LACP

knowledgebase.lancom-systems

Hier sollte eine Beschreibung angezeigt werden, diese Seite lässt dies jedoch nicht zu.



Huawei switch configuration step by step

How to configure the Huawei Switch configuration Learn the configure Huawei switch from the Basic. Lets help to make 1000 subscribers ? Huawei Switch config C

Link Control Protocol (LCP): Mastering PPP Link Management

The Link Control Protocol (LCP) is an integral subprotocol within the Point-to-Point Protocol (PPP) suite, playing a pivotal role in managing network connections. As the foundation of



Contact Us

For datasheets, pricing, or custom telecom energy solutions, please visit:
<https://www.koskolong.co.za>