



**Adam Tas Corridor Energy**

# **Construction Site Optical Cable Acceptance Standards**





## Overview

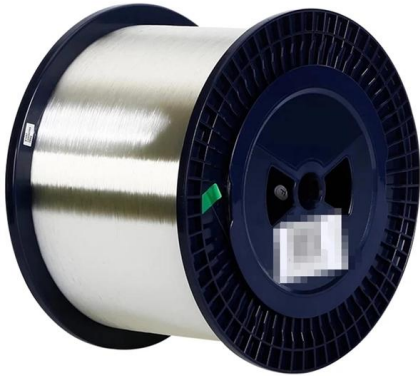
---

163 describes criteria for the installation of optical fibre cables defined in Recommendation ITU-T L. (FOA) was founded in 1995 to help develop the workforce to build the fiber optic networks to support a rapid expansion in communications and the Internet. Sections are included for project management; cable handling, testing and equipment; overhead cable placement; underground cable placement; underground enclosures; bonding and grounding; cable. ' The Fiber Optic Association (FOA) recently published a standard titled "FOA Standard For Installing Fiber Optic Cable Plants.



## Construction Site Optical Cable Acceptance Standards

---



### Understanding and Selecting Optical Fibre and Cable

In this document, the relationship between the cable features, followed standards, test parameters, and acceptance criteria are explained with examples for a better understanding of an optical fibre cable

### General Optical Fiber Cable Installation Considerations

General Optical Fiber Cable Installation Considerations Some key considerations for installing optical fiber cable are highlighted below. Failure to follow these guidelines may result in damage or



### How Standards and Regulations Influence Fiber Optic

Explore how industry standards and regulations shape the construction of fiber optic cables, ensuring safety, performance, and compliance in modern network

### The FOA Reference For Fiber Optics -Outside Plant

Typically, optical fiber cables do not carry electrical power, but the metallic components of a conductive cable are capable of transmitting



current. When the



### **Tata Steel Technical Standard S2651001 Supply, Erection and**

Breakout cables are defined as prefabricated fiber optic cabling installed in dedicated cable routing between cabinets in one room like an E-room or server room.

### **Acceptance Requirements for Optical Fiber, Optical Cable, and**

1.1 SCOPE This standard provides acceptance requirements and technical insight that have been removed from acceptance standards for cable and wire harness assemblies incorporating optical



### **The FOA Reference For Fiber Optics**

The fiber optic contractor should be able to work with the customer in each installation project through six stages: design, installation, testing,





## FOA Standard For Installing Fiber Optic Cable Plants

Before the fiber optic cable plant can be installed, construction may be needed to provide the infrastructure in which the fiber optic cables will be installed.

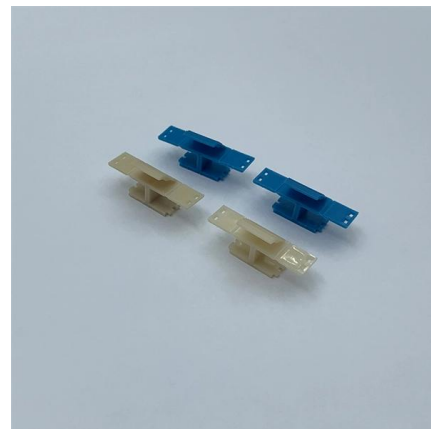


## FIBER OPTIC STANDARDS

Fiber Optic Cable: A cable that contains individual glass fibers, designed for the transmission of digital information, using light pulses.

## FIBER OPTIC CONSTRUCTION STANDARDS

Fiber optic cable sequential numbers are required at each pole location and vault wall. Sequential numbers will identify conduit length, and slack left in vaults and at poles.



## FOA Standard For Installing Fiber Optic Cable Plants

This standard describes procedures for installing and testing cabling networks that use fiber optic cables and related components to carry signals for communications, security, control and similar purposes.



## Recommended Practices for Optical Fiber Construction

These recommended practices cover all aspects of optical fiber construction and testing from project management, through deployment, to activation and testing.



## IEEE Std 525 -2016, IEEE Guide for the Design and Installation of Cable

IEEE-SA Standards Board Abstract: The design, installation, and protection of wire and cable systems in substations are covered in this guide, with the objective of minimizing cable failures and their

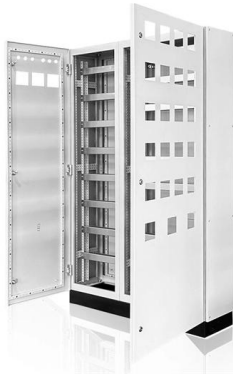
## Optical Fiber Cable

Find engineering and technical reference materials relevant to Optical Fiber Cable at GlobalSpec.



## Master Your Fibre Optic Installation: Step-by-Step Best Practices

This prevents any interruption in light flow through the cable, thus maintaining high-quality data transfer rates. Employing optical network terminals for testing can assist in guaranteeing



### **ITU-T Rec. L.163 (11/2018) Criteria for optical fibre cable**

This Recommendation also describes how to mitigate the considerable risks and/or issues to which the optical fibre cable may be exposed when infrastructures are minimal during installation, maintenance



### **Standard for Installing and Testing Fiber Optics**

Unless directed by the owner or other agency that unused cables are reserved for future use, remove abandoned optical fiber cable (cable that is not terminated at equipment other than a connector and

### **Site Acceptance Test for Optical Fibers**

The document outlines site acceptance test procedures and plans for optical fibre cables. It includes 3 types of site acceptance tests: 1) Pre-installation drum tests,





## The FOA Reference For Fiber Optics

Fiber Optic Cable Plant - Acceptance Of The Finished Product - Deliverables What is involved in the specification and acceptance of a cable plant at the end of a installation project and what are

## WORKMANSHIP STANDARD FOR FIBER OPTIC TERMINATIONS, CABLE

Purpose This Standard sets forth termination and cabling requirements for optical fiber and cable assemblies.



## Choosing the right fiber cable to meet the National

What UL standards fiber cable network planners and installers need to look for to ensure compliance with the US National Electrical Code (NEC).



## FOA Publishes Standard for Installing Fiber-Optic Cable

The new standard from the Fiber Optic Association is subtitled 'Guidelines For The Construction And Installation Of Fiber Optic Cable Plants.'



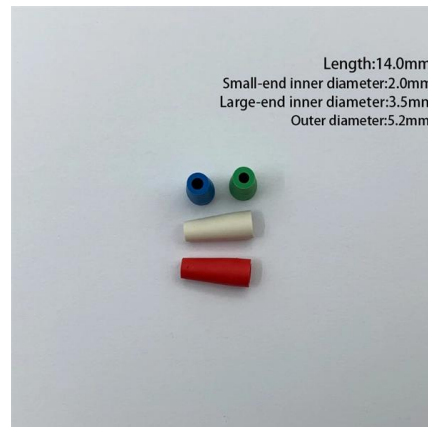
## Fibre Optic Cable System Acceptance Testing

This document provides standards for acceptance testing of fibre optic cable systems at Eskom. It outlines requirements for splice acceptance procedures, fibre optic



## OSP Civil Works Guide-FOA

All optical fibre cables must be tested while on the drum, prior to deployment. A Bullet or Divot Bare Fibre Adapter is to be used to connect fibres to the OTDR.



## Contact Us

For datasheets, pricing, or custom telecom energy solutions, please visit:  
<https://www.koskolong.co.za>