



Adam Tas Corridor Energy

Construction Site Primary Main Distribution Box Number





Construction Site Primary Main Distribution Box Number



Requirements for distribution box at construction site

2? The rated value and action setting value of the main distribution box shall be compatible with the rated value and action setting value of the branch switch. 3? The electrical components and leakage

ELECTRICAL DRAWINGS CHECKLIST

3.20. For multiple villas, sub main distribution shall be installed near to villa. 3.21. Sub/main DB is not permitted in pump room. 3.22. Distribution arrangement shall be corrected. 3.23. The name of the



Main Distribution Board (MDB): The Backbone of Safe

Learn what a Main Distribution Board (MDB) is, how it works, its key components, types, and why it's vital for safe, reliable power distribution in any

GTC Technical Guidelines

The electricity mains and services that will be installed on the development will typically remain the property of the licenced Electricity



Distributor named in your quotation.

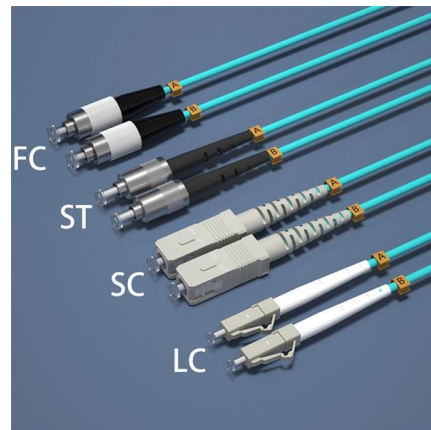


Distribution Boxes Types - The Complete Guide

A commonly used distribution box contains doorbells, earth leakage devices, timers, or contact breakers. However, the distribution boxes have

The difference between the first, second, and third levels of

The requirements for the distribution box can be based on the power consumption plan of the project, and if not, you can go to a sample construction site to see (such as large projects, which



The installation requirements for the distribution box

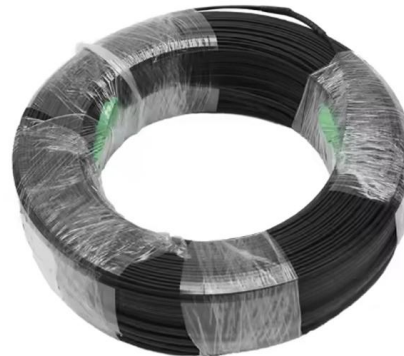
Learn how to install a distribution box safely and correctly. Covers wiring, placement, standards, and expert tips for a compliant setup.





Distribution Automation Handbook

While designing the construction of a primary distribution substation, there are a number of different busbar arrangement alternatives for both voltage levels. The choice between the different



SRP , Arizona electric power and water utility company

SRP , Arizona electric power and water utility company



Power supply on the construction site

A construction power distribution box is an essential part of a construction site as it ensures that the power needs of all the equipment and machinery on the site are met.



Size determination, installation method and wiring mode

It depends on the actual wiring diagram and how to arrange the switch and arrange the routing of the primary switch. If all miniature circuit breakers are determined





Distribution Box Guide: Types, Components & Solutions

Understand distribution boxes (DB boxes) in 5 minutes. Learn about types, components, functions, and uses. Find the perfect DB box for your needs.



Key Points Of Installation And Collocation Of Distribution Box In

The power distribution system at the construction site shall be distributed in different levels. The main distribution box (or distribution room) shall be set up.

Distribution Boxes Types - The Complete Guide

The power distribution boxes deliver electricity from the main electrical main to other circuits. Several distribution boxes are designed for specific use in



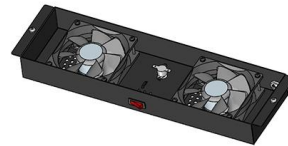
Single Phase Distribution Box Definition and Main Parts

A single phase distribution box controls and protects home or office circuits. Learn its definition, main parts, and how it ensures electrical safety.



Distribution Box: Types and Functions , Axis-Electricals

A distribution box ensures that electrical supply is distributed in the building, also known as a distribution board, panel board, breaker panel, or electric panel.



Arrangements of LV Utility Distribution Networks (1)

Medium to large-sized towns and cities have underground cable distribution systems. MV/LV distribution substations, mutually spaced at

What are the primary, secondary and tertiary distribution boxes?

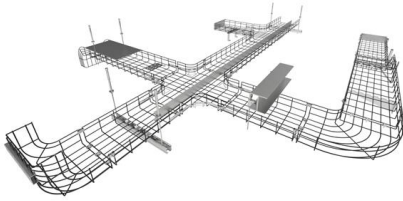
Primary distribution box: three-phase power supply, ground wire and zero wire are introduced from the transformer. Secondary distribution box: from the power line of primary distribution box to temporary





WALTHER-WERKE: Construction site power distributors

All Borsecker construction site power distributors are manufactured in accordance with these standards and are unit checked before shipping. As part of our quality management system, each construction



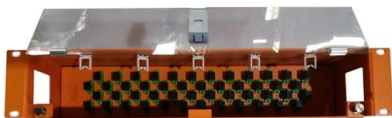
3.0 URD DESIGN GUIDELINES 3.1 Overview of ATCO

3.4.3 Transformer Loading Tables 3.1, 3.2 and 3.3 identify the maximum number of 100 amp, 200 amp or a combination of 100/200 amp customers (services) that can normally be supplied from ATCO's



Electrical DB, SMDB, and MDB Installation Guide , PDF

The document provides a method statement for installing electrical distribution boards (DB), sub-main distribution boards (SMDB), and main distribution boards



The Complete Guide to Distribution Box: Installation, Types & More

The primary purpose of a distribution box is to provide a safe and organized way to control electrical circuits. When an electrical fault occurs, such as an overload or short circuit, the protective



Primary and secondary power distribution systems (layouts explained)

Primary: The main distribution panel, supplies power from the transformer. Secondary: Intermediate panel, routes power to buildings or zones. Tertiary: Final distribution point for equipment or

Contact Us

For datasheets, pricing, or custom telecom energy solutions, please visit:
<https://www.koskolong.co.za>