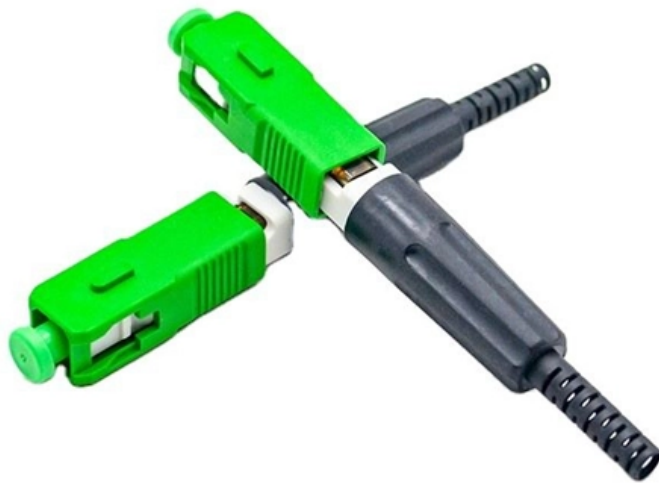




Adam Tas Corridor Energy

Control Cable Tray Size Standards





Control Cable Tray Size Standards



Cable Tray Sizing and Standards Guide

The document outlines National Electrical Code requirements for cable tray sizing based on cable type and size. It provides tables specifying the

Explaining NEC Article 392 on Cable Trays

NEC Article 392 explains cable trays, their components, appropriate wiring methods for cable trays, and instances where they are and are not



Cable Tray Systems: Requirements and Best Practices

Comprehensive guide to cable tray systems requirements: tray types, materials, loading, supports, bonding, routing, and best practices for safe electrical cable management.



Cable Tray Dimensions and Specifications as per NEC

Many electrical systems employ cable trays. They route cables safely & efficiently. NEC



defines minimum cable tray size & electrical installation



Cable Tray Dimensions Guide: Standard Sizes, Tray

Explore standard sizes by tray type, understand width and depth limits, and see how to calculate and choose compliant cable tray sizes for real projects.

IEC Standard for Cable Tray: Complete Technical Guide

One of the most recognized frameworks globally is the IEC standard for cable tray systems. This standard ensures safety, durability, and performance



Cable Tray Size Choosing: Key Factors for Electrical

Learn how to choose the right cable tray size for your electrical system by key factors such as cable type, material, future expansion and etc.



GUIDE CABLE TRAYS TECHNICAL

Specifies requirements for metal cable trays and associated fittings designed for use in accordance with the rules of Canadian Electrical Code, Part I and the National Electrical Code®

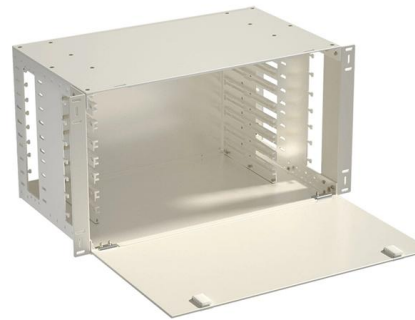


Cable Tray Size and Dimensions: How to Choose the

Learn how to calculate the perfect cable tray size and dimensions for your electrical project. This guide covers load capacity, fill ratios, and industry

Annex I

When cable trays have to connect two buildings and have to go through accessible trenches, the minimum size of the trenches must allow human access along the cable trays placed in these



Tray Cable Size Chart: Choosing the Right Gauge

In this guide, we walk through what tray cables are, the meaning of AWG sizes, a detailed tray cable size chart, key factors in selecting the right gauge, common tray cable types and



Cable Tray Size Chart and Selection Guide

This comprehensive guide walks through the essential factors that determine proper cable tray sizing, explains how to interpret dimensional specifications, and provides practical insights into



Cable Tray Size Calculation for Project Engineers

Cable tray size calculation is important for ensuring safe cable installation, proper heat dissipation, and enough spare capacity for future



GUIDE CABLE TRAYS TECHNICAL

In accordance with its continuous improvement policy, Legrand reserves the right to change the specifications and illustrations without notice. All illustrations, descriptions and technical information





12-SDMS-06

4.1.2 The Metallic cable trays shall be manufactured in accordance with NEMA VE-1 standard and/or equivalent IEC standard. 4.1.3 Metallic cable trays shall be designed as a mechanical support for



Cable Tray Types and Sizes

What is Cable Tray Systems? An electrical cable tray is a type of containment system used to support insulated electrical cables for power distribution, control,

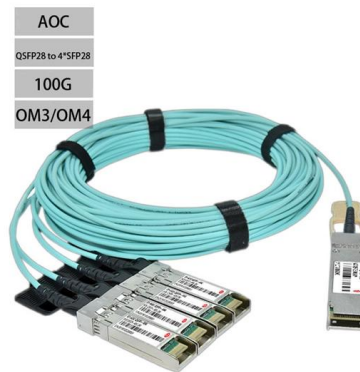


What is the standard size of cable tray?

What is the standard size of cable tray? The standard sizes of cable trays vary depending on the manufacturer, application requirements, and regional

Cable Tray Types and Sizes

Explore various cable tray types and sizes for electrical installations. Learn about ladder, perforated, solid-bottom, wire mesh, and channel trays in this complete



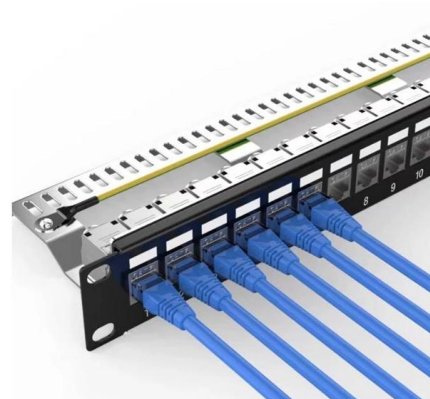
Cable Tray Sizing

Follow industry standards to select the appropriate cable tray dimensions. Avoid overloading and ensure proper spacing for heat dissipation. Conclusion: Choosing the Perfect Cable



Cable Tray and its types & Sizes

A cable tray is a type of a containment used to support insulated electrical cables used for power distribution, control, and communication.



Cable Tray Size Guide: How to Choose the Right Dimensions

Selecting the right cable tray size is critical for electrical safety, system efficiency, and cost control. This comprehensive guide covers standard cable tray sizes, calculation methods, and practical selection





Types of Cable Trays - Advantages, Applications and Sizes

Explore the types of cable trays, their advantages, applications, and standard sizes. Learn how they improve cable management and support various industries.



B-Line series Cable Tray Design Considerations

Cable tray support locations are defined by the NEMA VE-1 and VE-2 Manufacturing & Installation Standards, which specify the requirements for cable tray systems designed for use in accordance

Cable Tray SHIB NAL

The National Electrical Manufacturers Association (NEMA) also publishes three consensus standards that apply to the proper manufacture and installation of cable trays: ANSI/NEMA-VE 1-1998, Metal



Cable Tray Sizing per IEC Standards

How to size cable tray according to IEC standard and BS standard - Free download as Word Doc (.doc / .docx), PDF File (.pdf), Text File (.txt) or read online for free.



Cable Tray Spacing Standards for Installation and Safety

The Importance of Cable Tray Spacing in Electrical Infrastructure Cable tray spacing is a critical aspect of electrical infrastructure, influencing both



Cable Tray Technical Guide A practical guide to product selection and

This guide for engineers and installers has been developed by ABB as a practical reference regarding cable tray characteristics, installation, and requirements.

Cable tray manual

Ventilated trough cable tray is often used when the specifier does not want to use ladder cable tray to support small diameter multiconductor control and instrumentation cables.



Contact Us

For datasheets, pricing, or custom telecom energy solutions, please visit:
<https://www.koskolong.co.za>