



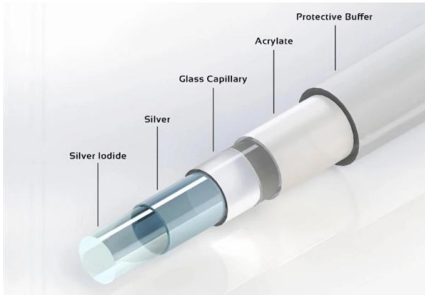
Adam Tas Corridor Energy

Core Switch Aggregation Function





Core Switch Aggregation Function

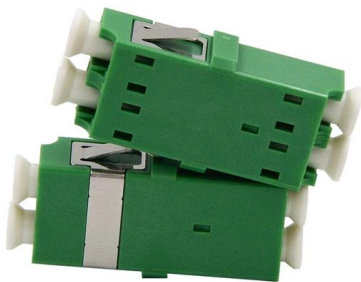


What Is a Core Switch? Network Backbone Architecture Guide

In a large enterprise, the core switch aggregates data from multiple distribution switches and routes it rapidly across the local area network (LAN) or toward the data center.

Aggregation layer , FortiSwitch 7.6.0 , Fortinet Document Library

This model allows the aggregation switches to easily accommodate thousands of devices passing through this layer while simplifying the design, maintenance, and operations. The following figure



What is an Aggregation Switch?

As the physical entity of the aggregation layer, the aggregation switch's primary function is to aggregate the data of the access layer switch and

What Is an Aggregation Switch and How to Choose?

What Is the Function of the Aggregation Switch in a Network? Installed in the middle of the network



architecture, the aggregation switch is in charge of controlling the



What Is an Aggregation Switch?

What is the difference between an aggregation switch and a core switch? An aggregation switch consolidates traffic from access switches, while a core switch acts as the backbone of the

Aggregation Switches

Why we need the aggregation switch? Data Aggregation: The primary function of an aggregation switch is to gather traffic from multiple access



Aggregation Switch

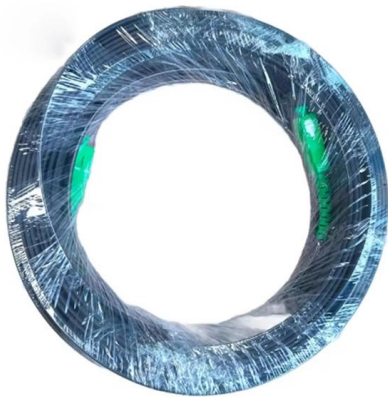
An aggregation switch refers to a type of switch used to connect multiple ToR switches to a core switch/router in a cloud data center network. It enables high-bandwidth aggregation ports to be





Wiley Online Library , Scientific research articles, journals, books

Hier sollte eine Beschreibung angezeigt werden, diese Seite lässt dies jedoch nicht zu.



SMB Switch: Access Switch vs Aggregation Switch vs

The aggregation switch is used to aggregate the access switch. The core switch is used to aggregate the aggregation switch and is also responsible

Core Switch

Core switches are defined as high-capacity switches located at the top of a cloud data center network, connecting aggregation switches and providing interfaces to wide area networks (WANs). They are



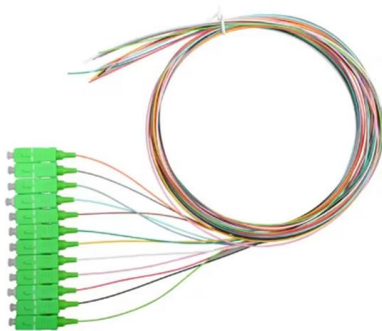
Core, Aggregation, or Access Switches? Choose the Perfect Fits

Discover the crucial differences between core, aggregation, and access switches. Find out which type can best transform your network's performance in 2025.



Understanding Switch Aggregation: A Comprehensive

QSFPTek: How to Choose the Best Aggregation Switch?: This source provides a comprehensive guide on choosing the best aggregation switch,



Datacenter Core and Aggregation Design

Thus, it consolidates L2 traffic in a high-speed packet switching fabric and provides a platform for network- based services at the interface between L2

What is an Aggregation Switch?

The aggregation layer in the three-layer network architecture model plays the role of uploading and distributing. As the physical entity of the





What is Core Switch and How to Choose?

Discover what a core switch is and learn how to choose the right one for your network. Explore key features in selecting a core layer switch. Make



Configuring Aggregation and Access Switches to Be Managed by the

On the core switch, configure a management subnet for aggregation and access switches, enable the DHCP server function on the gateway interface of the subnet, and enable the controller address auto



What is Switch Aggregation, Its Role and Selection Advice

The aggregation layer serves as the convergence point for multiple access layer switches and is responsible for handling all the communication traffic from the access layer devices



The relationship between access layer switches,

You may think that the access layer switch, the aggregation layer switch, and the core layer switch belong to the switch. Then, what kind of



Understanding Core Switch: What It Is and How to

In the realm of system networking, three key types of switches are frequently mentioned: access switches, aggregation switches, and core switches.

The Features and Differences Between Core Switches and

As the aggregation point of access switches, the aggregation switch is required with the ability to process the access layer information and submits it to the upstream chain of the core layer.



What is an Aggregation Switch? , Features and Practical Benefits

The aggregation switch conducts uploading and distributing in addition to other tasks including policy implementation, security, and working group access. It is used to lessen the stress



The Features and Differences Between Core Switches and Aggregation Switches

As the aggregation point of access switches, the aggregation switch is required with the ability to process the access layer information and submits it to the upstream chain of the core layer. And it



Data Center Design: Basic 3 Layers, Core, Aggregation,

Data Center Basic Layered Design of Core, Aggregation, and Access The data center network design is based on a proven layered approach, which

What is Switch Aggregation, Its Role and Selection Advice

4. Functional management: Unlike core switches, aggregation switches can be either Layer 2 or Layer 3 switches. When a Layer 2 switch is used as the aggregation switch, routing and



SMB Network Design: Core vs. Distribution vs. Access Switches

Core Layer: The high-speed backbone, often connecting multiple distribution switches.
Distribution Layer: The middle ground that aggregates access layer traffic, applying routing and



Core, Aggregation, or Access Switches? Choose the

Discover the crucial differences between core, aggregation, and access switches. Find out which type can best transform your network's

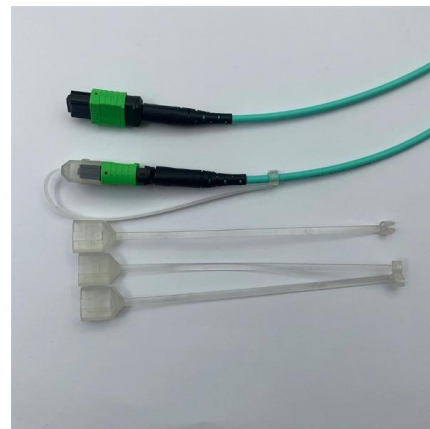


What is a Core Switch , Functions and Difference over Normal Switch

It is a powerful backbone switch in the center of the network core layer, which centralizes multiple aggregation switches to the core and implements LAN routing.

What is a Core Switch , Functions and Difference over Normal Switch

Network aggregation switches, on the other hand, connect many networks over a single link. As a result, it increases the network's bandwidth. This article explained the question of what is



Understanding the Core Switch: Key Differences and Uses

Even though core switches are concerned with data aggregation at high speeds, edge switches guarantee data flow at the device level. Despite the



Contact Us

For datasheets, pricing, or custom telecom energy solutions, please visit:
<https://www.koskolong.co.za>