



Adam Tas Corridor Energy

Core Switch Hardware Installation





Overview

This installation guide provides procedures for setting up, configuring, and managing the Core Switch 2/64 and Core Switch 2/64 power pak. Unleash the power of AI with data centers designed for speed, scale, and agility. I will be replacing a Cisco 3750x with a Nexus 3127 and would like some advice about how to go about the actual migration with the least downtime.



Core Switch Hardware Installation



HP StorageWorks 2/64

View and Download HP StorageWorks 2/64 - Core Switch installation manual online. HP StorageWorks Core Switch 2/64 and SAN Director 2/128 Installation Guide (AA-RVUSC-TE, January 2005).

Cisco Catalyst 9200 Series Switches Hardware

Installation Guidelines Observe these guidelines when removing or installing a power supply module. Do not force the power supply module into the



Switch Installation

Switch Installation This chapter describes how to install and connect a Catalyst 3650 switch. It also includes planning and cabling considerations for stacking switches.

Cisco Catalyst 9400 Series Switches Hardware

Installing the Switch What to do next After installing the chassis in its location, complete the



installation process by: Connecting the chassis to system

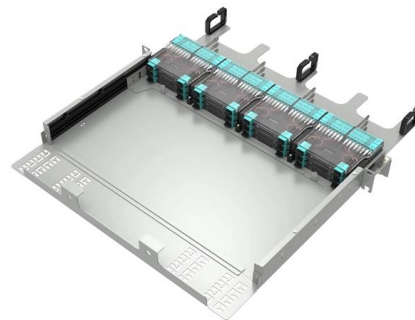


SME Network Solution Typical Configuration Examples

"Gateway (AR720) + Core Switch + Access Switch + AP + AR180" Networking: Huawei eKit Cloud Management "Gateway + Core Switch + Access Switch + WAC + AP" Networking: Local Entire

Cisco Catalyst 9600 Series Switches Hardware Installation Guide

Fan Tray Assembly The fan tray assembly (C9606-FAN) in Cisco Catalyst 9600 Series Switches consists of a fan tray and a connector that is attached to the fan tray. It is responsible for cooling the



What Is a Core Switch in a Network?

A computer network relies on specialized hardware, such as a network switch, to manage the flow of digital traffic efficiently. A network switch connects multiple devices within a local area



Switch Installation

Switch Installation For initial switch setup, assigning the switch IP address, and powering on information, see the switch getting started guide on Cisco .



What is a Core Switch , Functions and Difference over Normal Switch

What is a Core Switch? It is a powerful backbone switch in the center of the network core layer, which centralizes multiple aggregation switches to the core and implements LAN routing. The

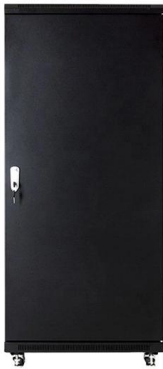
Core Switch vs. Distribution Switch vs. Access Switch

What is a Core Switch? A core switch is the primary switch installed at the backbone of a layered or hierarchical network. These data switches are responsible for



Best way to replace a core switch with minimal down time

As this is a replacement upgrade, both switches which are core switches will have the same IP addresses configured on them. So far I have two options that come to mind and would like



Core Switch 2/64 V4.1 Installation Guide

Use the following procedure to install the Core Switch 2/64 in the 9000 Series, or comparable 42U rack using the 14U Rack Mount Kit supplied with the switch. Allow approximately 45 minutes to complete



Cisco Nexus 9508 NX-OS Mode Switch Hardware

If the switch has two installed supervisor modules, the standby supervisor module is hot-swappable during replacement. Perform physical

Cisco Catalyst 9500 Series Switches Hardware Installation Guide

The Cisco Catalyst 9500 Series Switches family consists of fixed core and aggregation layer switches supporting redundant power supplies and modular fans. The Cisco Catalyst 9500 Series offers





Cisco Catalyst 9200 Series Switches Hardware Installation Guide



This guide provides comprehensive instructions for installing and configuring Cisco Catalyst 9200 Series Switches, ensuring seamless integration and optimal performance.

Introduction to Core Switch Configuration

Switches should be able to achieve wire-speed switching, which is the rate at which data is transferred on a transmission line, to minimize switching bottlenecks.



Catalyst 2960 Switch Hardware Installation Guide

This chapter describes how to start your switch and how to interpret the power-on self-test (POST) that ensures proper operation. It also describes

Cisco Catalyst 9300 Series Switches Hardware Installation Guide

This guide provides instructions for installing and configuring Cisco Catalyst 9300 Series Switches.



Network Switch Components and Technical Analysis

The switching engine is the core component of the switch, responsible for data forwarding and routing. It processes data packets from various ports and forwards them to the correct output ports based on

ITPro Today, Network Computing, IoT World Today combine

ITPro Today, Network Computing and IoT World Today have combined with TechTarget . The page you are looking for may no longer exist.



Hardware Installation Guide for Cisco 8500 Switches

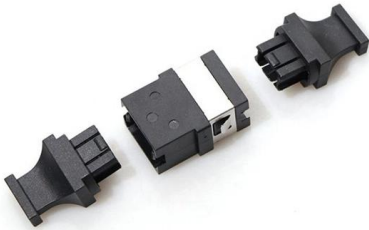
Laser safety Energy hazard Preventing electrostatic discharge damage Installation guidelines Procure tools and equipment Prepare your location Prepare yourself Prepare rack for





HPE Aruba Networking

HPE Aruba Networking Hardware Installation Guides, Startup Guides, and safety and regulatory information in all available languages for access points, switches, beacons, controllers and gateways.



Understanding the Core Switch: Key Differences and Uses

Explore the core switch's role as the backbone of your network. Discover key differences, uses, and insights into layer 3 core switch technology.

Install Core Switch

Install Core Switch This article outlines the process for installing a Core Switch and is applicable for all Panel Suppliers and Panel Members.



Supply, Installation, and Configuration of Core Switch

Supply, Installation, and Configuration of Core Switch 1. TECHNICAL REQUIREMENT AND SCOPE OF WORKS Planning Review the existing network infrastructure and topology. Determine the required



Contact Us

For datasheets, pricing, or custom telecom energy solutions, please visit:
<https://www.koskolong.co.za>