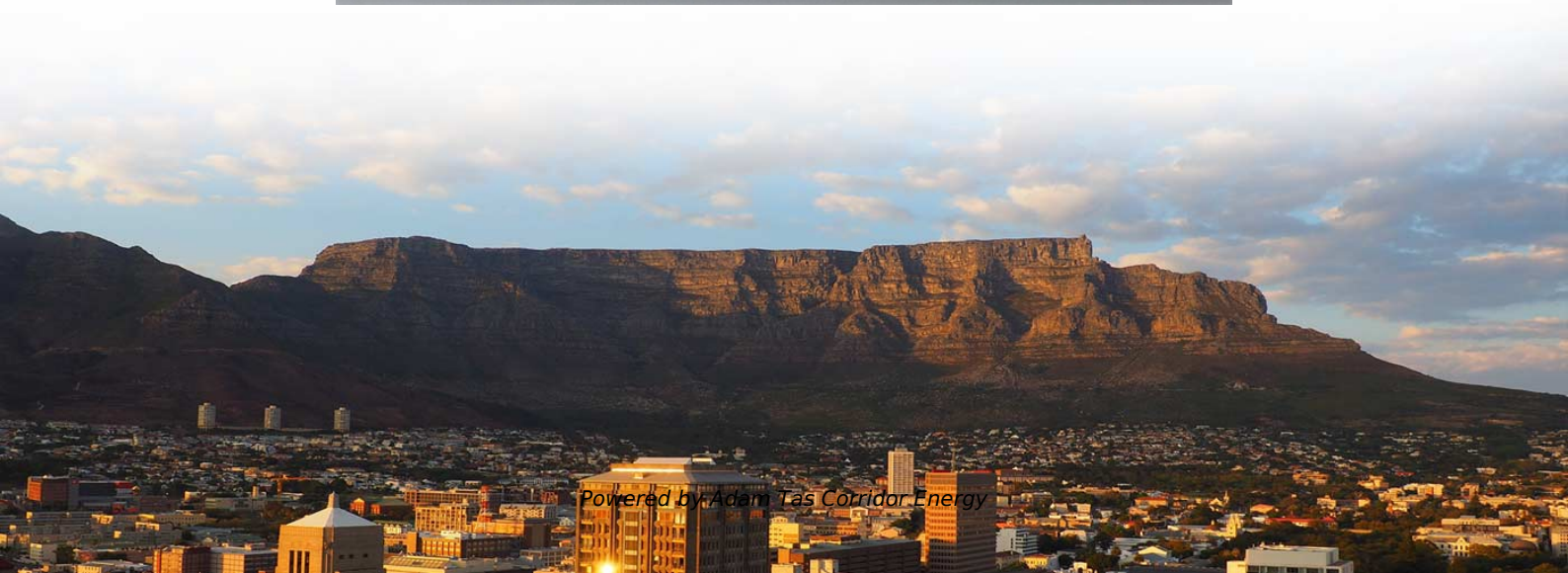
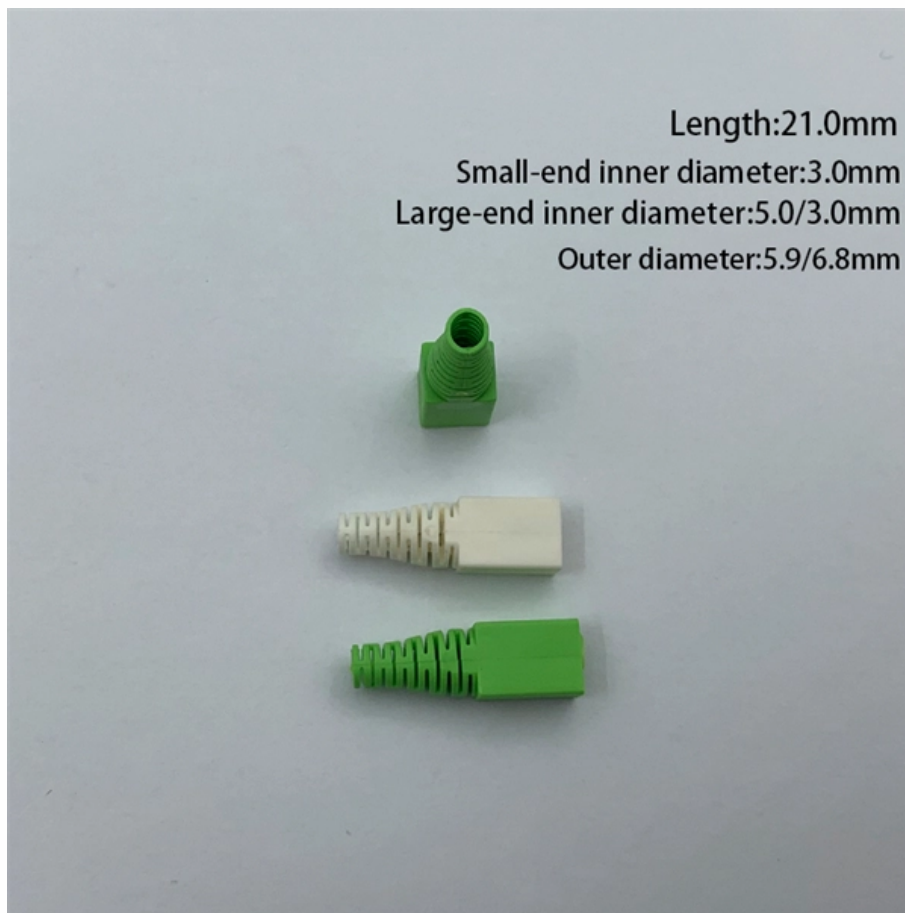




**Adam Tas Corridor Energy**

# **Customized Light Sensor Module**





## Customized Light Sensor Module

---



### LED Modules » Chips 4 Light

Chips 4 Light is your expert for specialty lighting with customized LED modules and optoelectronic solutions in the fields of medicine, sensor technology and industry.

### Modulino Light

It is designed to be used with any compatible board with Qwiic, allowing you to build smart lighting, colour recognition, and optical sensing projects without making complicated connections. The



### Light Level Sensor

The LM393 is a simple photo-resistor light sensor that has both analog and digital outputs. The digital output has a trim potentiometer that can be used

### Light Magic: Using LM393 and Arduino UNO

Automatic light control using a photosensitive LDR sensor module and Arduino. Find this and



other hardware projects on Hackster.io.



### Light Sensor Module For Digital Light Intensity Detection

The light sensor module is suitable for single-chip microcomputer, PLC and other control devices like Arduino, Raspberry Pi, ESP32, ESP8266 and so on. The detection brightness can be adjusted.



### LDR Module

Learn how a LDR light sensor module works, how to connect the LDR light sensor module to ESP32, how to program ESP32 to detect the light. The detail



### LM393 LDR Light Sensor Module , Photosensitive Light

The LM393 Photosensitive Light-Dependent Control Sensor LDR Module is equipped with a high-quality LM393 voltage comparator, making it not only easy to install



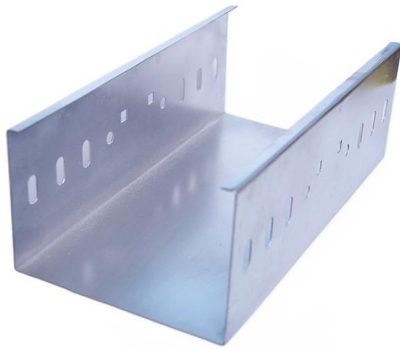
## How to detect light using an Arduino

When using a light sensor module, refer to its datasheet or documentation to understand its pinout and operating characteristics. How are



## 15 Best Arduino Light Sensor Modules That Will

These modules range from compact photodiodes to advanced ambient light sensors suitable for automatic lighting and environment monitoring.



## Light Sensor Board Design and Assembly: A High-Precision Custom

If your product involves sensitive sensor applications, custom connectors, or tight-space PCB layouts, we welcome your inquiry. Whether it's BGA, HDI, or high-TG multi-layer boards, our professional



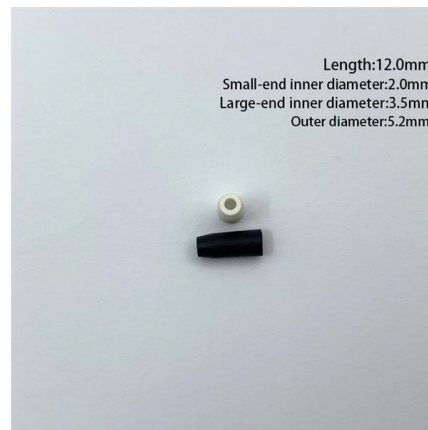
## LDR sensor with Arduino - How to use (with examples)

Learn how to use a Light Dependent Resistor with Arduino. This post will cover the basics of the LDR and how to use it to turn on a light when it's dark.



### DIYables LDR Light Sensor Module for Arduino, ESP32,

This 4-piece digital LDR light sensor module set features adjustable threshold sensitivity via built-in potentiometer and dual output modes (digital and analog)



### Photosensitive Sensor Module for Light Detection and

Enhance your light control system with our Photosensitive Sensor Module. Featuring a responsive photosensitive resistor, it ensures accurate light detection and



### Build a Custom Light Controller Board With Pmod KYPD

Considering how pricey consumer light controllers can be (often \$100 bucks or more-not including the lights!) we decided to try to make a cheaper,





## LDR Sensor Module , Light Dependent Resistor Module

Specification Operating Voltage: 3.6V to 5V DC  
Adjustable potentiometer to adjust the sensitivity  
LM393 comparator IC for digital output Easy to install thanks to bolt

## Lumistrips Custom LED Modules & Strips - Build Your Own High

This tool is designed to easily configure your custom rigid LED modules or strips, accommodating sizes up to 600mm in length and 420mm in width, with White or Colored LEDs.



## Light Sensor Triggers LED - Arduino Tutorial

Introduction Interfacing a Light-dependent resistor (LDR) with an Arduino microcontroller to control an LED based on the ambient light level is a simple yet powerful way to create projects that

## Custom LED Display Lights Supplier

This Sensor LED Module features ambient-light detection and multiple color options, ideal for retail displays, packaging and signage. Customizable for OEM LED



### **LDR Photosensitive Light Sensor Module - 4-Pin Analog**

LDR-based photosensitive light sensor module with 4-pin interface. Offers both analog and digital output for light detection. Ideal for Arduino light-sensing

### **Custom PCBA Modules for LED Control , Hytronik**

Custom PCBA modules with Bluetooth and DALI control for LED systems. Enhance your lighting project's performance and integration.



### **DIYables LDR Light Sensor Module for Arduino, ESP32,**

4-piece digital LDR light sensor module set with adjustable threshold and dual analog/digital outputs for Arduino, ESP32, ESP8266, Raspberry Pi.



## Automatic Room Light Controller With Arduino and PIR

In our earlier articles, we have explained What is a PIR Sensor, How it Works, and Arduino Light Sensor with LDR. In this project, we will set up an automatic light



## Photo-resistor LDR Light Sensor Module , Makers

The LDR Light Sensor Module detects light intensity, with resistance decreasing as light increases. Ideal for automatic lighting and brightness sensing.

## OPT3001 Ambient Light Sensor Module , Ambient Light

Utilize the RAK1903 OPT3001 ambient sensor Arduino module to build an ambient light data acquisition system suitable in LoRaWAN® applications like a



## Contact Us

---

For datasheets, pricing, or custom telecom energy solutions, please visit:  
<https://www.koskolong.co.za>