



Adam Tas Corridor Energy

Density of cable tray steel plate





Overview

All illustrations, descriptions and technical information included in this document are provided as indications and can cable trays are equivalent. The mechanical and electrical characteristics, tests, certifications, overall quality management, recommendations mentioned. Is your cable tray system optimized for safety, dependability, space and cost savings?

Cable tray (or cable ladder) systems are a popular alternative to electrical conduit systems, as they have an outstanding record for dependable service, design flexibility and cost savings in commercial and. Featuring a unique cross slot pattern, this cable tray pattern has been developed to our high integrity wrap over couplers.



Density of cable tray steel plate



Cable Tray: Material Properties

The main advantage of utilizing steel in cable tray fabrication is the high strength to low cost ratio, however, the disadvantages of using steel are the increased

cable tray system

A cable tray system is an assembly of metallic cable tray sections and accessories, that forms a rigid structural system to support cables.



Full cable tray systems specification document

All covers and splice plates must also be hot dip galvanized after fabrication; mill galvanized covers are not acceptable for hot dipped galvanized cable tray. All hot dip galvanized after fabrication steel

Steel cable tray

For example, the first selection issue is the environment to which the cable tray will be subjected. This selection will lead to the best



material for your application.



CABLE TRAY SYSTEM

CABLE TRAY ICMS cable tray system including Fittings and accessories is manufactured With return flange in a standard length of 2.44Mtr and 3 Mtr, according to the following Specifications and

CABLE TRAY

SFSP produces a variety of products ranging from cable management systems; cable trays, cable ladders, basket trays, trunkings and support systems, to mechanical cladding fixations, steel lintels



318 T & B CABLE TRAY CABLE TRAY SYSTEMS

Why specify our cable tray? Nonmetallic cable tray systems have been tested and proven in the harsh environment of the offshore oil and gas industry. This tray is ideally suited to withstand the corrosive





cable tray technical specifications

Armorduct cable tray systems are usually assembled using M6 roofing bolts particularly for couplers, fishplates and connection to supporting framework. It should be noted that independent testing has

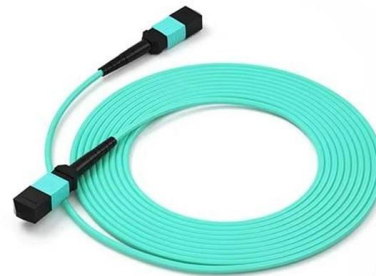


GUIDE CABLE TRAYS TECHNICAL

If it has excellent electrical continuity and is integrated in the installation's equipotential bonding system, a metal cable tray reduces the coupling's impact and thus contributes to good EMC of the electrical

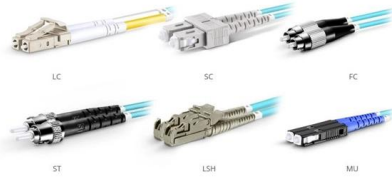
Cable Tray Technical Specifications , PDF

Cable Tray datasheet ref - Free download as Word Doc (.doc / .docx), PDF File (.pdf), Text File (.txt) or read online for free. The document provides a technical



Cable Tray Technical Specifications , PDF

The document provides a technical data sheet for cable trays including ladder and perforated types. It lists specifications for material, thickness, dimensions, loading



OM3 Fiber Patch Cable Family

Technical Data Sheet Cable Tray System

The cable tray has been tested and proven to perform to BS EN 61537:2007 - Cable Management - Cable Tray Systems and Cable Ladder Systems, on a variety of tests including Safe Working Loads,



SELECTION OF CABLE TRAYS

There is a general rule to calculate maximum loading capacity of a cable tray. In many projects, this rule is used as an initial assumption for measuring and

Data Centre Cable Trays: High-Density Cabling Guide

Learn about Data Centre Cable Trays for high-density cabling. Get a guide on design, materials, smart management, & future tech for data halls.



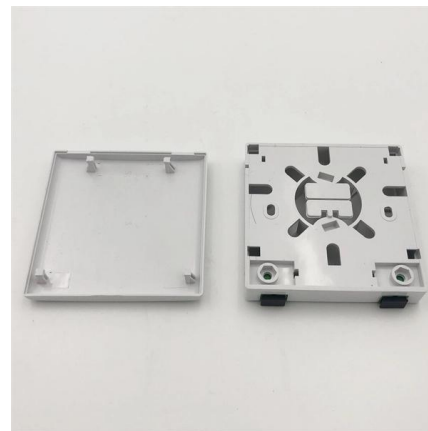


Cope Ladder Master Spec

General: Except as otherwise indicated, provide metal cable trays, of types, classes and sizes indicated; with splice plates, bolts, nuts and washers for connecting units.

TECHNICAL AND SIZING DATA

Galvanic corrosion of dissimilar metals e.g. between aluminum ladder tray and ungalvanized steel, should be accomplished through the separation of these two elements by the use of an insulator



A T & B Cable Tray Metallic cable tray

Cable tray systems offer unsurpassed reliability, resulting in less maintenance and down time - important considerations for all installations and especially for industries such as data

SELECTION OF CABLE TRAYS

It is assumed that a full cable tray has a cable density of 0.28. kg/cm². Example: The cross-section area of a 50mm x 300mm cable tray (i.e. 5 x 30 cm) is 150 cm².



Integrated Aluminum Alloy
Die Casting



Durable and Secure Metal Screws

Comoros Stainless Steel Cable Tray Cover Plates on Sale, Buy

Find the best wholesale price Comoros Stainless Steel Cable Tray Cover Plates Online. Opentip offers a great selection of Comoros Stainless Steel Cable Tray Cover Plates at discount prices. High

Cable Ladder Cable Tray Weight Calculation Guide

Learn how to perform a Cable Tray Weight Calculation for accurate estimations. Discover the formulas and step-by-step methods for calculating the



B-Line series Cable Tray Design Considerations

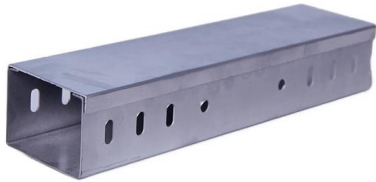
Snow load is measured by density and thickness, and it can be significant for a cable tray that is completely full of cables or a cable tray that has covers. The density of snow varies greatly due to its





Type of Cable Tray

Cable Tray Materials: Most cable tray systems are fabricated from a corrosion-resistant metal (low-carbon steel, stainless steel or an aluminium alloy) or from a metal with a corrosion-resistant finish



LEGRAND CABLE TRAYS TECHNICAL GUIDE

Not all cable trays are equivalent. The mechanical and electrical characteristics, tests, certifications, overall quality management, recommendations mentioned in this technical guide only apply to our

CABLE TRAY SYSTEMS GUIDE

Steel Ladder System Hubbell's NEXTFRAME® Ladder Tray is the effective and widely used cable runway that supports and delivers bundles of cable between cabinets, racks, and closets, along



26 05 36 Cable Trays for Electrical Systems

Eaton offers several options for metallic cable tray including galvanized steel, stainless steel and aluminum. Eaton ladder type cable tray is available in a heavy duty (Series 2, 3, 4 and 5) and a light



MECHANICAL PROPERTIES OF CABLE TRAY - K?raç

A cable tray system may be affected by thermal expansion and contraction, which must be taken into account during installation. To determine the number of



cable tray technical specifications

It should be noted that independent testing has been carried out to verify the structural performance of cable tray at the minimum and maximum temperature classifications for test conditions. They should

B-Line series Cable Tray Design Considerations

By incorporating Eaton's support recommendations with straight sections, cable tray fittings, vertical adjustable splice plates and heavy duty expansion splice plates, B-Line series cable ladder solutions





Cable Tray System and Joints

Cable Support Systems resist acids, salts, alkalis and a wide range of aggressive chemicals and environments which have drastic effects on galvanized steel and

Contact Us

For datasheets, pricing, or custom telecom energy solutions, please visit:
<https://www.koskolong.co.za>