



Adam Tas Corridor Energy

Design of cold aisle in computer room





Overview

Hot aisle and cold aisle containment are foundational concepts in data center design. Why should the computer room design hot and cold aisles, design principles and how to construct?

Why should the computer room design hot and cold aisles?

Because the computer room uses the hot aisle and cold aisle to change the previous practice of placing the cabinets in the same direction in the. While these concepts are not new, their successful implementation requires detailed planning, precise engineering, and thorough analysis to deliver maximum efficiency.



Design of cold aisle in computer room



Data center cooling systems and technologies and how

Cabinets should be as full as possible to avoid the empty spaces, gaps and cable openings that can leak hot or cold air into the opposite aisle,

The pros and cons of hot and cold aisle containment

With data centres and computer server rooms becoming larger and more numerous companies are often faced with a decision: what is most suitable for their



Hot and Cold Aisle Containment Systems: How They

Hot aisle containment (HAC) and cold aisle containment (CAC) are the most efficient ways of preventing your servers from overheating and these

Hot vs. Cold H

Hot aisle or cold aisle containment is a layout design for server racks and other computing data center. The aisle/cold aisle containment



configuration is to conserve energy and lower cooling costs by



Aisle Containment

Open Aisle Containment Traditional open aisle data centres use perimeter PAC (precision air conditioning) or CRAC (computer room air conditioning) units to



Data Center HVAC Systems

Learn how Data Center HVAC Systems work using cold and hot aisle strategies and air cooled versus liquid cooled IT equipment racks.



Data Center Design: Hot Aisle & Cold Aisle - Length

Proper aisle planning isn't just about airflow--it's about optimizing safety, serviceability, and system efficiency. By adhering to these length and width





Explore hot and cold aisle containment for your data center

Hot and cold aisle containment can help you maintain the best air flow, temperature and humidity in the data center to keep servers running efficiently.



Hot Aisle vs Cold Aisle Containment: Full Guide

Hot and cold aisle containment systems are key in keeping data centers cool. We'll look at their main differences to help you choose the right one

Cold Aisle Containment: The Ultimate Guide To

We also discussed critical considerations for designing an effective containment system and clarified the essential differences between cold aisle and hot aisle



Data Center Hot and Cold Aisle: A Quick Guide

Data Center Hot and Cold Aisles Data center hot and cold aisle is a layout design used to improve cooling efficiency and reduce energy consumption



Data Center Aisle Containment

Traditional open aisle data centers use perimeter PAC (precision air conditioning) or CRAC (computer room air conditioning) units to channel cold air up through a



Aisle Containment Systems for Hot & Cold Aisle Solutions

Aisle containment is a layout design for server racks and other computing equipment in a data center. The goal of a hot or cold aisle configuration is to conserve

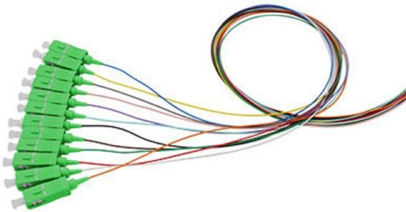
How to Make the Right Choice? Comparison between the Enclosed Cold

After arranging the cold (hot) aisle in the computer room, the cold air volume (Q_1) required by a single rack remains unchanged. Since the cold air sent out by the precision air



Server Room Containment Systems , Hot & Cold Dial Containment in

Hot and cold aisle containment is a proven strategy to optimize airflow, reduce energy costs, and improve cooling efficiency. At Profile IT Solutions, we specialize in designing and implementing



Why should the computer room design hot and cold aisles?

The airflow organization in the equipment room completes the isolation of cold and hot aisles, which maximizes energy efficiency and achieves the purpose of



FOCUSED COOLING USING COLD AISLE CONTAINMENT

While either hot aisle or cold aisle containment systems can be installed and are both capable of increasing efficiency and cooling today's high heat data centers, meaningful differences exist in how





Hot Aisle vs Cold Aisle in Data Centers: Technical

What Are Hot Aisle / Cold Aisle Configurations?
Data centers are ovens if left unmanaged. Hundreds, sometimes thousands of servers pump out



Hot Aisle / Cold Aisle Cooling Explained

Keep an eye out for our next posts about Cold / Hot aisle containment systems and In Row cooling. In the mean time if you would like advice about how to cool your server racks, how to

Cold Aisle Containment & Hot Aisle Containment

Computer Room Air Handling (CRAH) units do. However, in the constant pursuit for a balance between energy efficiency and saving money, it can be difficult to dec.



Cold & Hot Aisle Containment For Data Center Efficiency

Learn how cold and hot aisle containment improves airflow, reduces energy use, and boosts reliability in data centers. Backed by CFD insights from



Server Room Containment Systems , Hot & Cold Dial Containment in

Whether you need cold aisle containment, hot aisle containment, or a hybrid approach, our expert team ensures maximum thermal efficiency and reduced PUE (Power Usage Effectiveness). In modern



Data Centre Cooling: Hot Aisle and Cold Aisle Design

Ultimately, achieving optimum cooling in a hot/cold aisle data centre arrangement is a complex task that requires meticulous planning and attention to detail. Each

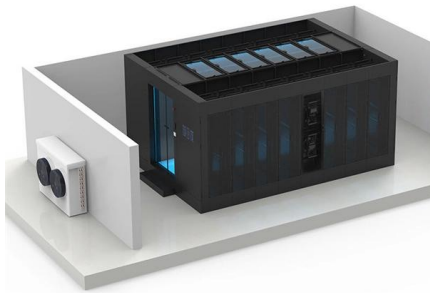


Cold Aisle Containment: The Ultimate Guide To

Additionally, cold aisle containment tends to be easier to implement compared to hot aisle containment, as it typically requires fewer modifications to the existing



1075KW HH ESS



Optimizing Data Center Cooling: The Power Of Hot And

Discover how to optimize your data center cooling system with hot and cold aisle containment. Learn about the assessment, design, installation, and

Hot and Cold Aisle Containment: What You Need to Know

Hot aisle containment systems isolate the hot aisle using a similar enclosure system to that of a cold aisle with a sealed door for access. This



The Advantages And Disadvantages Of Hot-Aisle, Cold

Also, in many cases, cold aisles have intermediate ceilings over the aisle. This may affect the overall fire protection and lighting design, especially

Hot Aisle vs Cold Aisle Containment Explained (Data Center Cooling

In this guide, we'll break down how hot aisle and cold aisle configurations work, what containment systems do, and why airflow management is critical in today's high-density data centers.



Contact Us

For datasheets, pricing, or custom telecom energy solutions, please visit:
<https://www.koskolong.co.za>