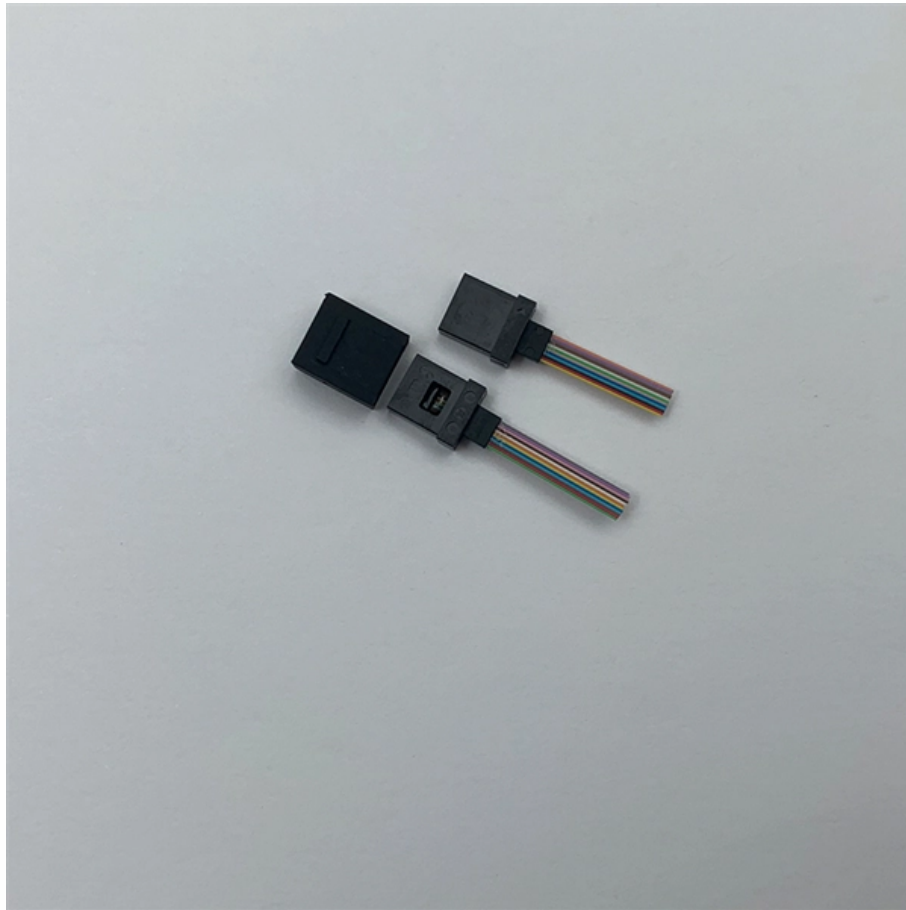




Adam Tas Corridor Energy

Diameter of indoor multi-film optical cable



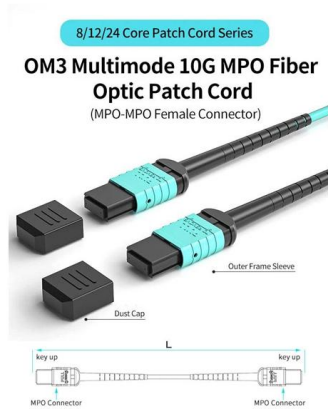


Overview

Sizes usually range from 900 μm (tight-buffered fibers, ideal for indoor applications) to 2–3 mm (loose-tube fibers, preferred for outdoor or rugged environments). We have a wide range of indoor and outdoor fibre optic distribution, patching and consumer cables, including Plenum, Rise and communication equipment. Used for applications that require a wide bandwidth connection to transfer audio, video, G. Core size determines performance: Single-mode (9 μm) is ideal for long distances; multimode (50 μm or 62. Cladding is standardized at 125 μm across all fiber types to ensure connector and splicing compatibility.



Diameter of indoor multi-film optical cable



Distribution Indoor/Outdoor (I/O) Plenum-Rated Optical Cables

Distribution Indoor/Outdoor (I/O) Plenum-Rated Optical Cables APPLICATION Leviton's plenum rated Indoor/Outdoor tight-buffer cables are designed for LAN/WAN campus and building backbone

FIBRE OPTIC CABLES GENERAL SPECIFICATIONS

FIBRE OPTIC CABLES GENERAL SPECIFICATIONS *
All attenuation values are valid for cabled fibres
** Zero Water Peak



Indoor Multifiber Cables Datasheet , FS

The indoor pre-terminated multifiber cables, refer to the 4, 6, 8, 12 and 24 fibers. We also provide a full set of customized services, such as length, connector, fiber grade, specification, cable jacket and

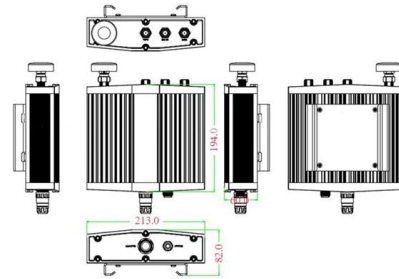
Fiber Optic Cable Buying Guide , Eaton

Fiber Optic Cable Buying Guide Choosing single-mode or multimode fiber for high-performance



data networking and telecommunications Fast data transmission,

Mechanical drawing



Opti-Core LSZH Indoor-Outdoor All-Dielectric Fiber Optic Cable DATA

specifications The fiber cable shall have a loose tube, all-dielectric (non-conductive) construction with 6, 12, 24 or 48 fibers and comply with common industry standards for indoor and outdoor

Fiber Optic Cable single-mode multi-mode Tutorial

Glass optical fibers are almost always made from pure silica, but some other materials, such as fluorozirconate, fluoroaluminate, and chalcogenide glasses,



Product Catalogue Fibre Optic Cable

1, 2 or 4 singlemode 250µm fibre FTTH indoor/outdoor drop cable designed and manufactured for indoor/outdoor use. This cable consists of a single 1.7mm gel filled loose tube and non-metallic water





Fiber Optic Indoor/Outdoor Cables

Our indoor/outdoor cables meet rigorous outdoor environments and can be routed indoors where flame rating applies, eliminating transition splices.

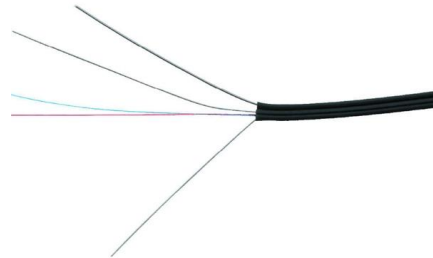


Multimode Optical Fiber Selection & Specification

Industry standard MMF specification includes dimensional (or geometry) requirements, mechanical requirements, optical transmission requirements, and even environmental requirements. Table 2

The Ultimate Fiber Optic Cable Size Reference Chart

Our comprehensive chart simplifies the process by outlining the key dimensions--core size, cladding size, coating diameter, and buffer size--that



Understanding and Selecting Optical Fibre and Cable

OPTICAL FIBRE AND CABLE This document will provide an understanding of optical fibre, optical fibre cable (OFC), application standards, and key considerations that one should make before selecting



Indoor optical cable characteristics

Indoor optical cables are designed to provide reliable and efficient data transmission within buildings and confined spaces. They serve as the backbone



Opti-Core Fibre Optic Indoor- Outdoor 4 Fibre Cable

SPECIFICATIONS in up to 24 fibres and have an all-dielectric loose tube construction. It shall be suitable for indoor applications, complying with IEC standards for low smoke / zero halogen and

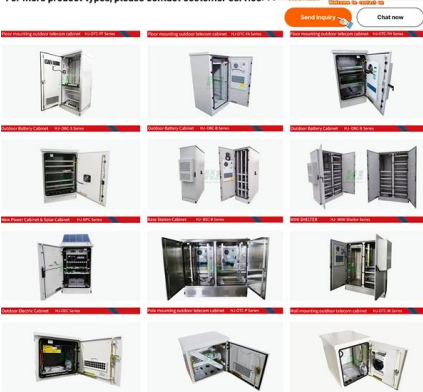
Opti-Core™ Fibre Optic Indoor- Outdoor Armoured Cable 48 to

The fibre cable shall contain 48 to 144 fibres and have an armoured loose tube construction. It shall be suitable for indoor applications, complying with IEC standards for low smoke/zero halogen and





Powerful manufacturers · 20+ years of experience · Support customization
For more product types, please contact customer service>>>



INDOOR FIBRE OPTIC OPTICAL CABLE SPECIFICATION

OPTICAL CABLE SPECIFICATION: P/N :
N3050D-(SM1)-(12), SM1= Single Mode 9/125,
MM1= Multimode 62.5/125, MM2= Multimode
50/125, (12)=12 cores, MM3= OM3 300M, MM4=
OM4 500M

Fiber Optic Indoor Cables

These indoor fiber optic cables are used exclusively within buildings and must have a flame-retardant cable jacket to fit this purpose. Flame resistant cable may be



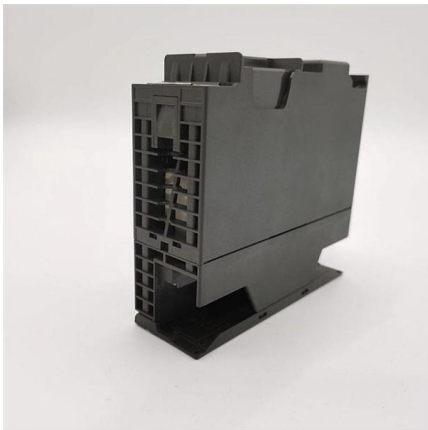
Optical Fiber Cables for Indoor/Outdoor Applications

Additionally, the cable contains tight buffered optical fibers, which are optical fibers that are directly coated with a thermoplastic buffer to a diameter of 900 mm.



A Comprehensive Guide to Indoor and Outdoor Fiber

Indoor fiber optic cables are designed for use in controlled environments, such as office buildings, data centers, and residential premises.



Opti-Core Fiber Optic Indoor Cable - Asia Pacif

Panduit™ Opti-Core™ Fiber Optic Indoor Cable is an integral part of the Panduit end-to-end fiber optic solution, designed to support today's data needs while meeting tomorrow's ever-advancing network

Optical Cable Overview

The indoor cable have an outer diameter of 2.2 mm, 2.5 mm or 3.0 mm. The outdoor cable are available with 2, 4, or 6 fibers. The diameter of the subunits are standard 2.2 mm.



Opti-Core Fibre Optic Indoor Cable 2 to 96-Fibres EuroClass

Opti-Core™ Fibre Optic Indoor Cable, 2 to 96-Fibres, EuroClass Eca and Dca for EMEA s p e c i f i c a t i o n s m p l y i n g w i t h I E C s t a n d a r d s f o r l o w s m o k e / z e r o h a l o g e n (L S Z H) a n d l a b e l e d a s E u r o C l a s s



Comprehensive Explanation of National Standard

Small Diameter: Small diameter refers to optical cables with a diameter below 8.0mm, suitable for limited space wiring. Cables with small diameters have the advantages of being compact



INDOOR FIBRE OPTIC OPTICAL CABLE SPECIFICATION

Cable Characteristics Numbers of fibres(n) :
Outer diameter (mm): 2 to 12 4.8mm-6.3mm
Weight(kg/km) : 20-30 Minimum bend radius(mm):
Tensile resistance(N) : 60 600 Crush resistance(N) : Operating

Fibre Optic Cable Catalogue

Fibre Types & Wavelengths oth indoor and outdoor use. We have a wide range of indoor and outdoor fibre optic distribution, patching and consumer cables, including Plenum, Rise



FibreFab-Fibre-Optic-Cable-Catalogue

FibreFab Established in 1992, FibreFab is a leading provider of fibre optic connectivity products used in data communications and Telecommunication networks. The Company designs, develops,



Indoor Fiber Optic Cable Types: Top 12 List

This guide explores common indoor cable varieties and their distinct attributes when wiring rooms or structures for high-speed fiber optic links.



Fibre Optical Multi Loose Tube Cable Indoor-Outdoor, 192F & 216F

Applications Building interconnection, Backbone networks, Telecommunication and drop cable applications. Cross Section Drawing

Contact Us

For datasheets, pricing, or custom telecom energy solutions, please visit:
<https://www.koskolong.co.za>