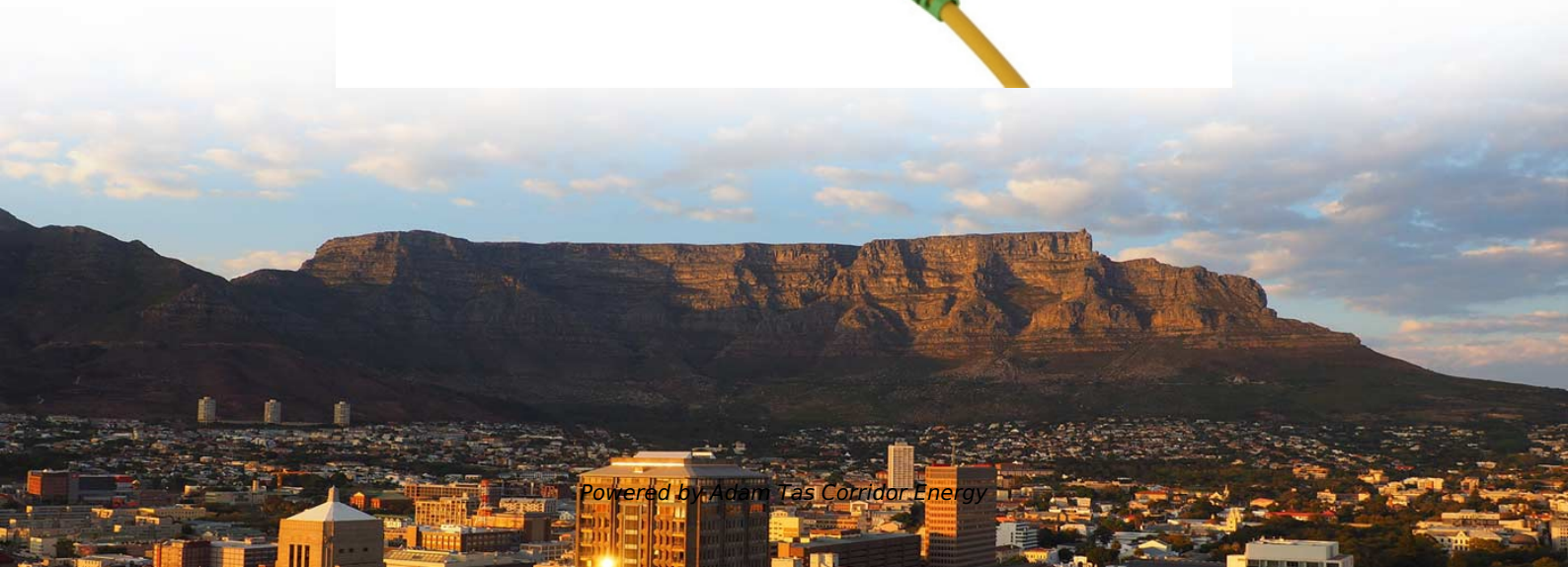




Adam Tas Corridor Energy

Dimensional parameters of communication corrugated ducts for rail transit





Dimensional parameters of communication corrugated ducts for rail

DWC HDPE Duct Specification for Railways



This document provides a draft specification for double walled corrugated high density polyethylene (HDPE) ducts for use in railway signalling. It specifies

AIR DUCT SYSTEMS FOR THE RAILWAY INDUSTRY

The 12 mm thick sandwich material, which has an insulating core, is made of PU foam laminated with aluminium foil on both sides. The material meets the fire



(PDF) Prefabricated glass fiber reinforced concrete

Prefabricated concrete cable ducts embody the transmission lines for the signaling and communication infrastructure of the high-speed railways.

HVAC How to Size and Design Ducts

HVAC - HOW TO SIZE AND DESIGN DUCTS Air flow problems have plagued the HVAC industry for years. No matter how much money you spend on a high-quality HVAC system, the equipment



Investigation of flow characteristics and heat transfer enhancement of

Analysis of flow and thermal characteristics for various corrugated duct geometries were experimentally and numerically examined in ref. for various Reynolds number and aspect ratios.



Chapter 14

1 Introduction This chapter provides detailed information on the applications, features, and benefits, material, material selection, and installation of high density polyethylene (HDPE) conduit and duct for

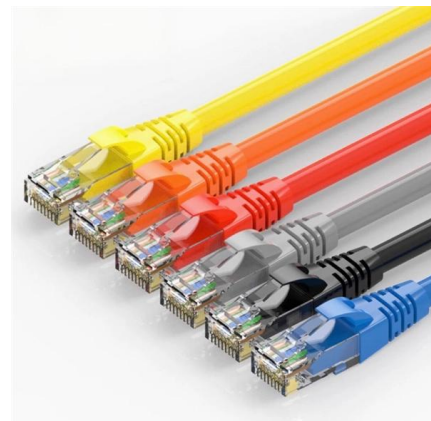


Fig. 1: Characteristic parameters of ducts: a) circular, b)

Download scientific diagram , Characteristic parameters of ducts: a) circular, b) rectangular, c) rounded rectangular. from publication: Development of new type





Corrugated Duct

The corrugated duct is used as a duct former for a variety of precast and cast-in-site concrete work. The ducts are clean in appearance, and free of rust on the inner



STANDARD CORRUGATED

Factory pre-installed Bull-Line™ Pull Tape with EVEN-LOAD™, ensures extra slack at any access point throughout the reel. Available 500 lb-6,000 lb tensile strength or locatable. Comes standard on

Dimensional analysis for the heat transfer characteristics in the

The studies presented above provide important insights into the correlation between the heat transfer and the geometry characteristics of the corrugated channel. However, the definitions of



SPECIFICATION for DOUBLE WALLED CORRUGATED HDPE DUCTS

In case the duct tested and inspected in accordance with this specification, fail to pass the tests or comply with the requirement of the specification, the whole consignment shall be rejected subject to



CABLE DUCT I & II

Our customers benefit from fast, flexible and safe installation of their signal and communication technology in our cable duct systems. We manufacture precision-fit angular elements, lowering



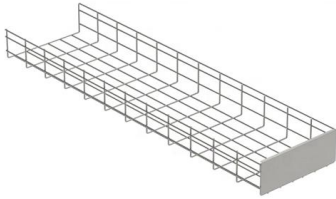
Telecom Standard Ducts , Dura-Line

Telecom Standard Ducts Telecom Standard Ducts Dura-Line's Telecom Standard Ducts are made from top quality virgin or regrind materials. There are many

Cables and cable ducts for communications / Elements

COMPOR manufactures various elements required for the railway and its infrastructure from fiberglass composite material. Cables and cable ducts for





Circular Ducts

Standard size of circular ventilation air ducts.
Circular Ducts Dimensions - Metric Units
Common circular ductwork sizes used in air handling ventilation systems:

SPECIFICATION for DOUBLE WALLED CORRUGATED HDPE

4.2 DWC Duct and conduit fittings within the scope of this specification shall be so designed and constructed that in normal use their performance is reliable and without danger to the user or



Tensile performance of UHPC-filled grouted corrugated duct

The influence of parameters on bearing capacities, failure modes, rebar strains, and corrugated duct strains was compared and analyzed to reveal the force transmission mechanism of



EVOTRAY CABLE DUCT CHANNELS Type 1 and Type 2

EVOTRAY cable duct channels Type 1 and Type 2 is ideal for laying in signal and communications lines in the ground surface or else elevated laying on railway routes and in power plants and industrial



Safe corrugated conduit transit for railroad technology

If corrugated tubes have to be guided safely in rail vehicles, e.g. through the roof or wall, the new UNI corrugated conduit transit from PFLITSCH is used. Its advantages: Corrugated tubes can be



STR for DWC Ducts 21.07.14 Fina_Upload_I

2.1.1 The infrastructure should be adequate for manufacture of the Double Walled Corrugated HDPE Ducts (applied for) as per specification and to ensure adherence to quality assurance plan.



CABSYS Rail NG - Technical information

The system is suitable for signal, communication and power cables along railway lines. It is particularly suitable for elevation in difficult terrain and requires only a





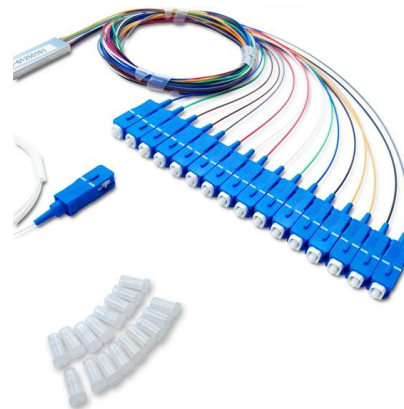
Experimental studies of flow characteristics in corrugated ducts

In the numerical investigation of Naphon and Kornkumjayrit, flow was considered as a one-dimensional through the channel which has a V-shaped shaped lower plate and plane shaped



Numerical study of turbulent flow and heat transfer in cross-corrugated

Abstract Cross-corrugated duct is commonly employed in plate heat exchanger. In this study, to further improve heat transfer in cross-corrugated triangular ducts, delta-shaped baffles are



Calculation of wear on a corrugated rail using a three-dimensional

This paper presents the results from simulations of railhead wear using a three-dimensional contact model. The wheel/rail contact is modelled as non-H

Conduit, P& C Flex corrugated flexible conduit

Material: o PVC P& C Flex non-metallic corrugated conduit helps make power and communication installations faster and easier by providing maximum installation flexibility.



Numerical Analyses of Heat Transfer and Fluid Flow in a

Abstract and Figures Steady laminar two-dimensional and forced convection in a corrugated duct with different configurations and flow conditions



Network Rail Telecommunications Cable

PACW/ solid polyethylene insulation/moisture barrier/HFFR sheath External Telephone Cable - suitable for tunnel and sub-surface applications (Complies with Specifications NR/PS/TEL/00015 and

HDPE Telecommunication Corrugated Duct

HDPE Telecommunication Corrugated Duct High-Density Polyethylene (HDPE) Telecommunication Corrugated Ducts are engineered to protect and manage





MOMENT Corrugated Duct

Corrugated Duct is used as a duct former for a variety of precast and cast-in-situ concrete work. The semi-rigid hot-dipped galvanized metal duct is strong and durable for casting into concrete and is

Contact Us

For datasheets, pricing, or custom telecom energy solutions, please visit:
<https://www.koskolong.co.za>