



**Adam Tas Corridor Energy**

# **Dimensions of Explosion-proof Distribution Boxes for Building Electrical Systems**





## Dimensions of Explosion-proof Distribution Boxes for Building Elect

---



### Model and Specification of Explosion-Proof Distribution Box

Explosion-proof lighting distribution boxes and cabinets come in a variety of models. They vary in terms of materials, including metal and flame-retardant plastic; installation methods, such as

### 5 Key Factors to Consider When Selecting Explosion Proof Distribution Boxes

Consider certifications, enclosure ratings, electrical needs, materials, and maintenance when selecting explosion-proof distribution boxes.



### Understanding Distribution Boxes: A Comprehensive Guide

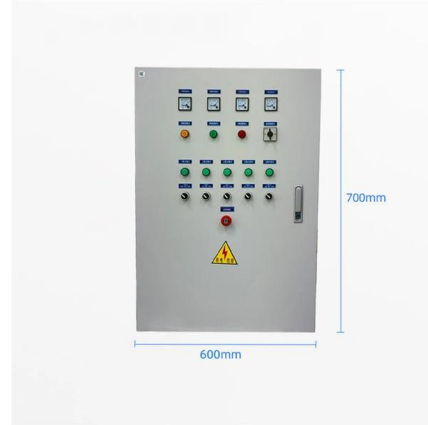
support safer operation in electrical systems For this reason, distribution boxes are widely used in homes, commercial buildings, industrial

### Explosion proof distribution box standards and installation issues

When the design is not specified, the height of the bottom edge of the lighting explosion-proof



distribution box from the ground should be 1.5 m, and the height of the bottom edge of the lighting



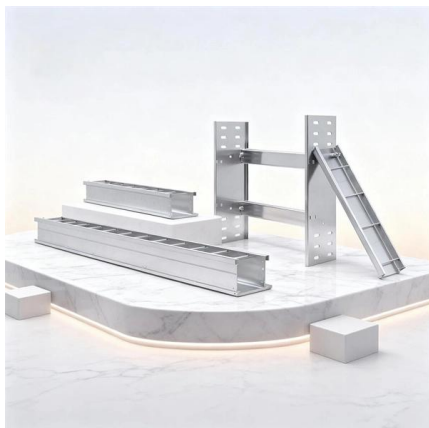
### **Top 3 Facts About Explosion Proof Distribution Box & Electrical**

In this article, we will explore three key aspects: certification standards, material selection, and application-specific design considerations. Explosion proof enclosures keep people and



### **Installation and Wiring of High and Low Voltage Explosion-Proof**

Explosion-proof distribution boxes, vital terminal distribution equipment in power systems, play a crucial role in controlling and protecting industrial electricity in hazardous environments. Given



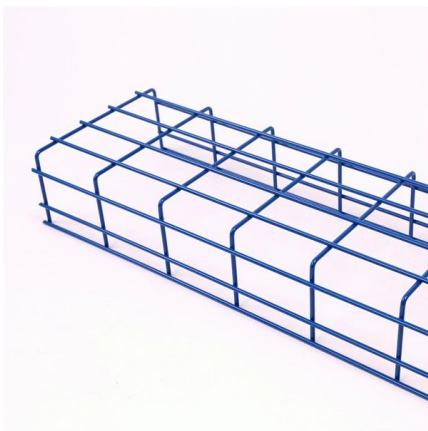
### **Ex d Junction Box Aluminium EJB-A , Supermec**

The EJB A range of ex proof junction boxes has been designed to meet the main requirements of power distribution, monitoring and signaling, and other electrical



## What Is an Electrical Distribution Box? A Complete Guide

An electrical distribution box is a centralized unit responsible for distributing electrical power across multiple circuits within various



## Distribution Boxes and Empty Enclosures

Distribution Boxes BXM51 Series Explosion-proof Illumination Distribution Boxes (Ex de liB) Technical data



## Explosion Proof Power Distribution Boxes

Flameproof and explosion proof, these power overhaul distribution boxes are suitable for use in hazardous areas. Specs: Ex mark: Ex de IIC T4 Gb DIP A21 TA,T4

## Intrinsically Safe Store

Distribution Boxes BXM(D)81 Series Explosion-proof Illumination (Power) Distribution Boxes (Ex d IIB+H2) Explosion protection to -CENELEC -IEC -NEC Can be used in Zone 1 and Zone 2 Zone 21



## Power Distribution Box Essentials: Functions, Types

Both ordinary distribution and ex-proof distribution power boxes serve the same purpose of safe power distribution, but each is suitable for different

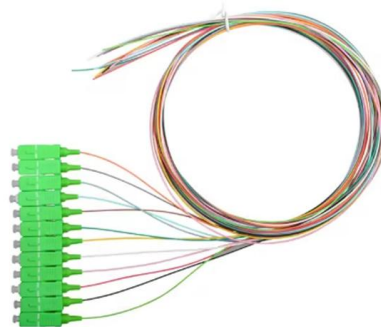


## 26 05 33.16 Boxes for Electrical Systems

Electrical Components, Devices, and Accessories:  
Listed and labeled as defined in NFPA 70, by a  
qualified testing agency, and marked for  
intended location and application.

## The installation requirements for the distribution box

A distribution box is the heart of any electrical  
system. It takes the incoming power and safely  
distributes it to different circuits throughout  
your





## Full Guide on Explosion-Proof Distribution Panel

Explosion-proof distribution panels are vital components in hazardous industrial environments, ensuring safety by preventing electrical equipment from igniting

## Energy Distribution

BARTEC offers one of the most extensive ranges of explosion-proof and substance-resistant components, devices, and systems for controlling, switching, and

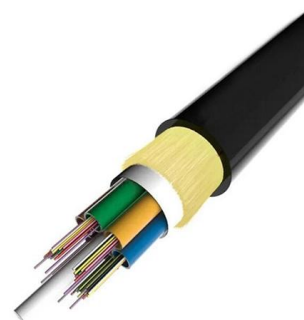


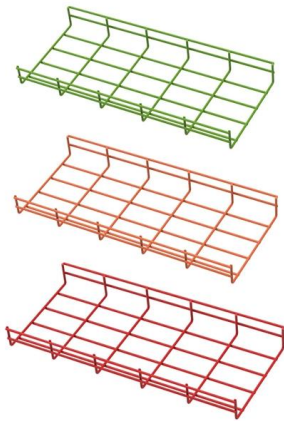
## Control and Distribution Panels , Ex d , EJB Series

Customizable configuration of operators, cable entry quantities and cable gland types as per specification. The enclosure series EJB forms the optimal basis for the

## Outdoor Electrical Distribution Box Specifications: NEC

Complete specification guide for outdoor electrical distribution boxes covering NEC Article 312 requirements, NEMA ratings, sizing calculations, and





## Explosion Proof Power Distribution Boxes CE92

Flameproof and explosion proof, these power overhaul distribution boxes are suitable for use in hazardous areas. Specs: Ex mark: Ex de IIC T4 Gb DIP A21 TA, T4

## Complete Guide For Distribution Boxes Types

Distribution boxes, also known as electrical distribution boards or panels, are pivotal components in electrical systems, ensuring the safe and organized distribution of

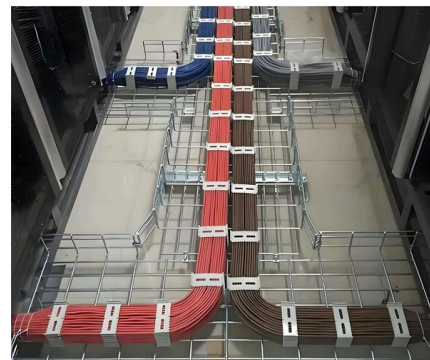


## Ex Distribution Boards & Enclosures , mlx-ex

Ex distribution boards - Explosion-proof distribution boards designed for Ex and ATEX areas. Customizable, safe, and certified electrical solutions.

## Explosion Proof Box & Cabinet

Product features: The explosion-proof control cabinet (box) can install various instruments inside. Low-voltage electrical appliances, frequency converters, PLCs, soft starters, and computer systems can





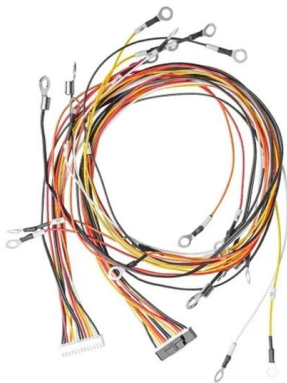
## **BXM (D)51 Series Explosion proof Distribution Boxes**



BXM (D)51 Explosion proof Distribution Boxes  
Explosion protection to -CENELEC -IEC -NEC Can  
be used in Zone 1 and Zone 2 Zone 21 and Zone  
22 Class I, Zone

## **Explosion Proof Enclosures , Complete Hazardous Area**

Learn everything about explosion proof  
enclosures for hazardous areas--design,  
certification, and industrial applications with  
ATEX, IECEx, and Class I Div



## **DISTRIBUTION BOARDS**

These are available in a range of materials  
including Stainless Steel, GRP & Sheet Steel from  
IP42 (Indoor) to IP 66 (Outdoor) Applications.

## **Contact Us**

---

For datasheets, pricing, or custom telecom energy solutions, please visit:  
<https://www.koskolong.co.za>