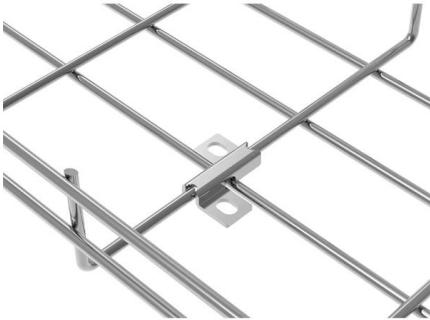




Dimensions of anti-static flooring and cable trays for FTTH



Fiber termination FTB Connect

different FTTH topologies and due to its flexibility can accommodate splitter, patch and splice options. FTB Connect comes with 6 hinged trays each with 12 crimp/shrink splice holders that can be shared

FTTH Design Guide for New Buildings

o Horizontal pathways (conduits, sleeves, cable trays, etc.) are used for taking the cables from the floor Tray and trunking cable capacities telecommunications room



Anti Static Raised Floor Systems: Advanced Protection for Technical

Discover industry-leading anti static raised floor solutions featuring superior static control, efficient infrastructure management, and sustainable design for data centers, server rooms, and technical

Best practices for underfloor cable management

Power cables are run close to the floor in cable tray located in the cold aisle, underneath



perforated floor tiles. Arranging the cables in this way provides horizontal separation by allocating different rows of



FRP Cable Tray Specification for Offshore

The document is a functional specification for FRP (fibre glass reinforced plastic) cable tray systems for use on offshore platforms. It outlines the following: 1. The

Cable Pathways: A Data Center Design Guide and Best

An underfloor cable tray is a product used primarily in data centers. The concept is the same as the overhead support apparatus. However, when using



How to choose a static control flooring product , Spectra

Electrostatic discharge (ESD) flooring is a broad term describing any flooring system designed to control static generation and discharge. Learn how static control



FTTH Network Installation Guide and Mobile Requirements

One dedicated cable tray with the following minimum dimensions must be provided: 16F fibre cables must be provided from each main telecom room and loop

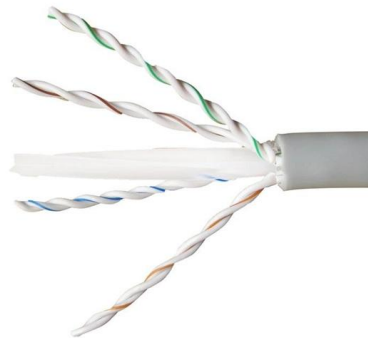


C-AJ-4109 dd

Max area of opening is 600 in² (3871 cm²) with max dimension of 30 in. (762 mm). See Concrete Blocks (CAZT) category in the Fire Resistance Directory for names of manufacturers.

Cable Tray Technical Guide A practical guide to product selection and

In designing supports for a cable tray system, consideration should be given to the loads associated with future cable additions and any additional loading that may be applied to the cable tray system (e.g.,



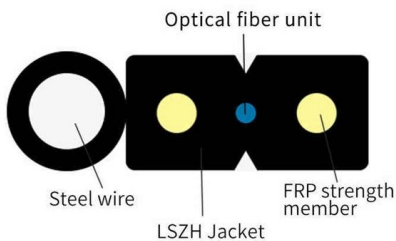
FTTH Handbook - edition 9 , FTTH Council

The FTTH Handbook is a resource for the fibre community. The FTTH Handbook covers every aspect of the network, from central office to subscriber



Long-Term Performance and Durability of Anti-Static Flooring Systems

CWWIN Floor provides industry-leading anti-static raised floor systems designed for data centers, electronics manufacturing facilities, laboratories, and other environments where electrostatic



STATIC ELECTRICITY & ANTISTATIC FLOORING EXPLAINED

Static electricity can cause many problems if the flooring materials chosen are not appropriate for use in electronic processing areas. These complex problems should be properly determined by an electrical

Cable Tray Technical Guide A practical guide to product selection and

A practical guide to product selection and installation This guide for engineers and installers has been developed by ABB as a practical reference regarding cable tray characteristics, installation, and



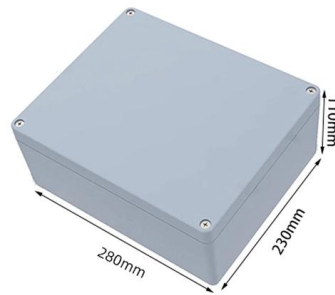


GRP Cable Trays , Cable Trays

Our GRP Cable Trays can be supplied in a variety of sizes.

Anti-Static Flooring Specifications , PDF , Electrical

Marvel's Anti-Stat flooring material controls static charges, keeps users safe from fires and failures caused by static, and complies with various industry standards.



Telecom Infrastructure Guidelines V.5 , PDF , Electrical

This document provides guidelines for building telecommunications infrastructure to enable high quality connectivity services. It outlines requirements for

FTTx Designing Best Practices

Design points of flexibility to allow for new services or reconfiguration of old ones - design hidden points of flexibility like traditional FDH's with more functionality. Consider the use of fiber indexing - daisy



TELECOMMUNICATION DESIGN GUIDELINES

Horizontal Pathways (conduits, Sleeves, Cable trays etc) are used for taking the cables from the ONU cabinet to the Telecommunications outlets in the apartment.

FTTH Design Guide for New Buildings

Design guide for Fibre-To-The-Home (FTTH) requirements in new buildings, covering civil, telecom, and cabling specifications.



FTTH Handbook 2021 , PDF , Fiber To The X

The document provides guidance on planning, building, and operating fibre-to-the-home (FTTH) networks. It covers topics such as strategic network planning,



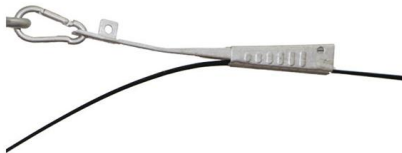
Etisalat FTTH Design Guidelines , PDF , Fiber To The X

This document provides guidelines for designing fibre-to-the-home (FTTH) infrastructure in new buildings to support Etisalat telecommunication services in



Complete Anti Static Flooring Specification Guide

Anti static flooring helps to dissipate static electricity safely, reducing the chances of sparks that can ignite flammable substances or damage sensitive equipment. Moreover, anti static flooring creates



IEC Standard for Cable Tray: Complete Technical Guide

The IEC standard for cable tray recognizes multiple tray types depending on application and structure. Each type serves a different purpose in



FTTH Design Guidelines for New Buildings

It outlines various civil requirements including an entry box for underground cables, entry pipes from the box into the building, a dedicated main telecom room, risers



Floor Distribution Box

Floor distribution box is a solution that represents a key opportunity in FTTH development solutions; it is located in building, in the places provided for this purpose.



Unitile Product Catalogue

The cable tray support system is also ready along with it, hence this reduces the coordination time and sequence of working with the electrical contractor (which they generally do pre-installation of raised



FTTH Handbook - edition 9 , FTTH Council

Discover the updated FTTH Handbook, Edition 9 - your complete guide to fibre network planning, design, build, and operation, now with new insights on aerial



B-Line series Cable Tray Design



Considerations

Available in 3, 4, and 6-inch widths with ventilated or solid bottoms, channel cable tray is ideal for smaller instrumentation cables and cable tray runs involving a small number of cables.

Contact Us

For datasheets, pricing, or custom telecom energy solutions, please visit:
<https://www.koskolong.co.za>