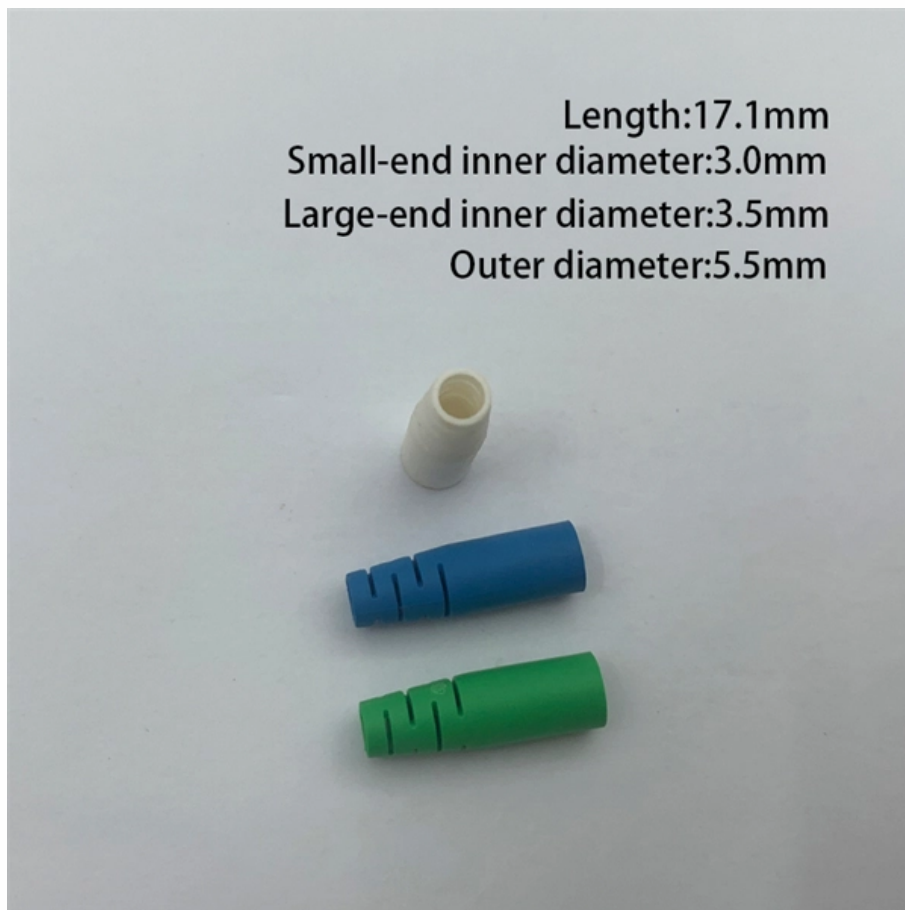




Disassembling Huawei Optical Module





Overview

Before removing or installing an optical or electrical module, ensure that no fiber jumpers are connected to the optical ports or no network cables are connected to the electrical ports on the module. A switch must use optical or copper modules that have been certified for use on Huawei S switches. What are SFP+, SFP28, SFP56 HUAWEI WDM replacing the optical module video shows you how to replace an optical module.



Disassembling Huawei Optical Module



Installing Optical Transceivers and Connecting Optical Fibers

Huawei optical modules are recommended. The optical modules from other vendors may cause faults on the USG due to incompatibility.

Replacing an Optical Module

An optical module is an electrostatic sensitive device. Therefore, you must take antistatic measures during the whole process of replacing an optical module to prevent the optical module from being



Appendix F Guide to Using Optical Modules

Appendix F Guide to Using Optical Modules
Common Faults of an Optical Module An optical module is not completely installed in position. If the optical module is not completely installed in position and

Optical Module Solutions for Huawei S5700/S5720 Series Switches

When using switches, we may encounter many confusions, such as what types of optical



modules are needed for different models of Huawei switches, and how to resolve issues encountered

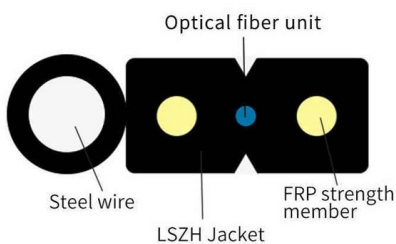


Replacing an Optical Module

Release the locking clip on the fiber connector, gently push the fiber connector inward, and then pull out the optical fiber. After removing the optical fibers from the optical module, cover the connectors with

Huawei Campus Optical Module Portfolio

In order to work efficiently, BIDI optical modules must be paired, and the duplexer must be tuned to match the desired wavelengths of the transmitter and receiver to achieve bidirectional data



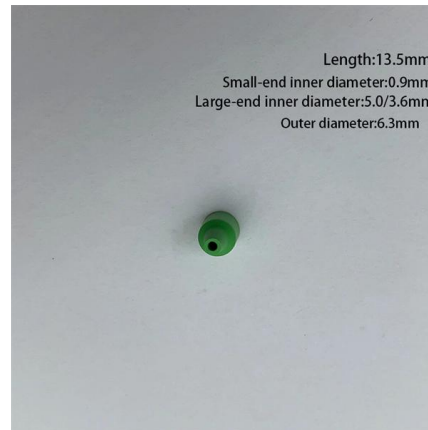
How To Read Optical Module Information On Huawei Switches

The following uses the Moduletek SFP-10G-LR module connected to a Huawei S6700 switch as an example to introduce how to read information of the connected optical module on a Huawei switch.



Optical Module: The Device Cannot Display Any Optical Module

Call Huawei global service hotline or contact software maintenance engineers to verify the software version. If allowed, reboot the device or power off and restart the device. Services on the device are



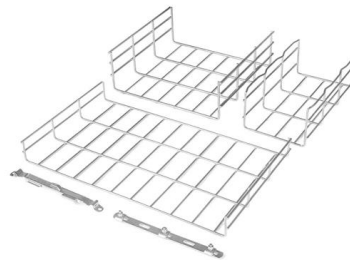
Equipped with a removable **Mounting Plate** inside the enclosure, enabling customized drilling and secure component mounting.

Replacing an Optical Module

Ensure that the optical module is correctly oriented and gently push it into the optical port until you hear a click. The new optical module must have the same optical parameters as the remote optical

Troubleshooting for Optical Modules on Huawei Switch

Troubleshooting for Optical Modules on Huawei Switch Many friends feedback that one problems occurred when using optical modules on switches, now we are



Optical Module Installation and Replacement

The method used to install a copper transceiver module is the same, except that the copper transceiver module connects to a network cable instead of optical fibers. Never look directly into an optical



Optical Module Installation and Replacement

Take out the new optical module from the package. Ensure that the optical module is correctly oriented and gently push it into the optical port until you hear a click.



HUAWEI WDM Replacing the Optical Module

HUAWEI WDM replacing the optical module video shows you how to replace an optical module. HUAWEI WDM Documentation:

Huawei P20 Pro Teardown

Huawei is angling for the high end segment with its three-eyed raven P20 Pro. They packed a ton of tech in here, what with three cameras, plus a 24





Installing Optical Modules

The device must use optical or copper modules recommended on the configurator because non-Huawei-certified optical or copper modules cannot ensure transmission reliability and may affect service

Optical Module Troubleshooting

The optical module installed on the optical interface is not certified for Huawei data center switches. The optical module type does not match the optical fiber type.



Displaying Optical Module Information

When certifying an optical module, Huawei comprehensively verifies the functions of the optical module to ensure the optical module quality. The functions include the installation and removal, transmit and

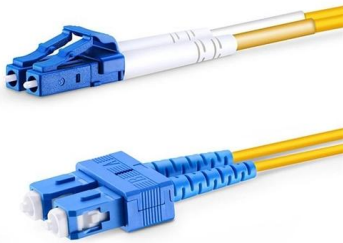
Replacing an Optical Module

Huawei-certified optical modules are strongly recommended because non-Huawei-certified optical modules cannot ensure transmission reliability and may affect service stability. Optical modules are



01-14 APPENDIX E GUIDE TO USING OPTICAL MODULES

Before using an optical time-domain reflectometer (OTDR) to test the connectivity or the attenuation of optical signals, disconnect the optical fibers from the optical module.



Checking the Optical Module Type

When certifying an optical module, Huawei switches comprehensively verify optical module functions to ensure the optical module quality. The functions include the installation and removal, transmit and



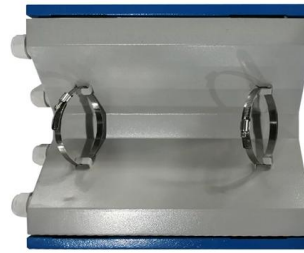
Replacing an Optical Module

Huawei is not responsible for any problem caused by the use of non-Huawei-certified optical modules and will not fix such problems. Replacing an optical module interrupts service transmission on the



What Is an Optical Module and Its FAQs (V200)

Describes what an optical module is and FAQs, including the fundamentals, appearance and structure, key performance counters, common types, and naming conventions of optical modules, causes of



Pulling out the optical module and shutdown interface causes the

Solve the problem of alarm indicator steady on by clear the alarm after it is confirmed that customer pull out the optical module and shutdown interface manually

Replacing an Optical Module

Impact on the System Replacing an optical module will interrupt services on the corresponding optical fiber. If any other host path is available, replacing an optical module will not affect services.

Motor protection controller



Huawei

We're sorry but web site doesn't work properly without JavaScript enabled. Please enable it to continue. Loading



Introduction of Optical Modules on Huawei Switches

Introduction of Optical Modules on Huawei Switches On an optical network, a sender needs to convert electrical signals into optical signals before sending them to a



Replacing an Optical or Electrical Module

Before removing or installing an optical or electrical module, ensure that no fiber jumpers are connected to the optical ports or no network cables are connected to the electrical ports on the module.

Replacing an Optical Module

Optical modules are electrostatic-sensitive components; therefore, you must take ESD protective measures when replacing optical modules. Do not insert an optical module backwards. If an optical





Replacing an Optical Module

Cover unconnected optical modules with dust plugs. Unplug the optical fibers from the optical module before removing it. Install or remove optical fibers carefully to avoid damaging the fiber connectors.

Contact Us

For datasheets, pricing, or custom telecom energy solutions, please visit:
<https://www.koskolong.co.za>