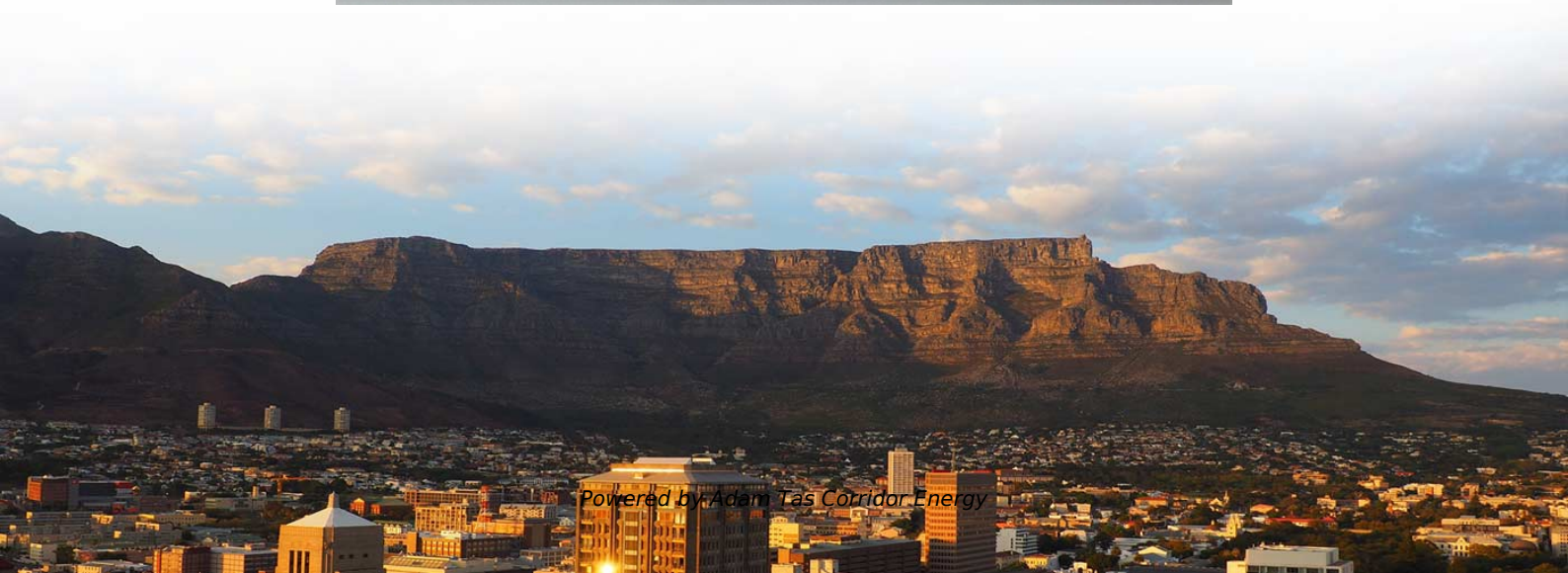
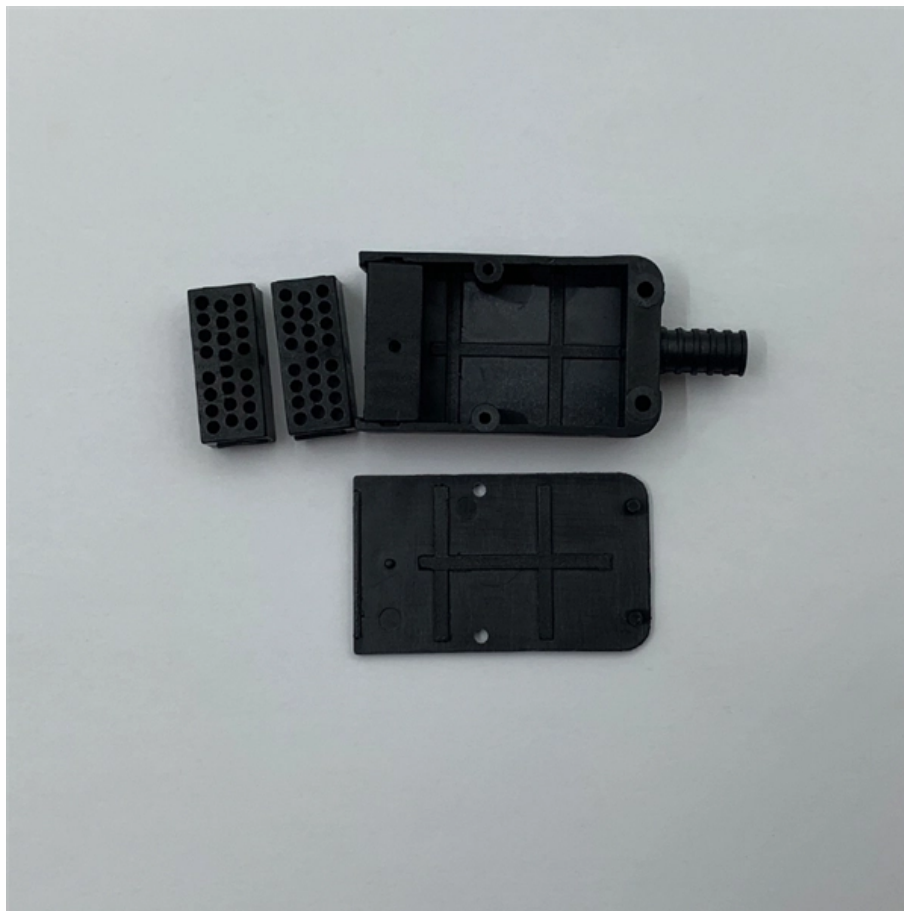




Adam Tas Corridor Energy

Disconnecting the outgoing wires from the distribution box





Disconnecting the outgoing wires from the distribution box



Understanding Distribution Boxes: A Comprehensive Guide

A distribution box, also known as a power distribution box or electrical distribution box, is used to distribute electrical power safely to multiple

A Step-by-Step Guide to Wiring an Electrical Panel Box

Find out how to properly wire an electrical panel box with a comprehensive diagram and step-by-step instructions.



Distribution Box Wiring Steps

?Wiring Direction?: Wiring between the main circuit breaker and each branch circuit breaker in the box generally goes on the left, and the wiring out of

Distribution Boxes: Types and Functions

Learn what an electrical distribution box (DB/distribution board) is, its main components



(MCB/RCCB/RCBO, SPD, busbar) and common types.



How to Wire a Home Distribution Box

Welcome to our channel! In this video, we'll walk you through the process of wiring a home distribution box with a detailed connection diagram.

Disconnect Box Wiring Diagram and Installation Guide

Safely install your electrical disconnect box. Comprehensive guide covers terminal identification, wiring diagram execution, and post-installation testing.



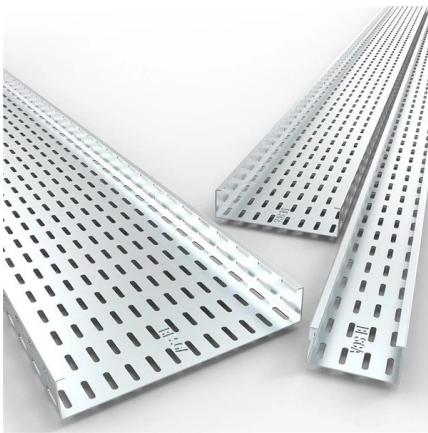
What is the proper way to terminate unused electrical wires?

I am replacing the wiring for a room and want to disconnect the old wiring. I came across: Terminating unused wire in breaker box But, that is at the main panel. My primary question is: #1



How to Wire a Home Distribution Box

How to Wire a Home Distribution Box - Step-by-Step , Distribution DB box wiring diagram
Welcome to our channel! In this video, we'll walk you through the



Home Distribution DB Box Wiring Connection Diagram , DB box wiring

Welcome to our channel ?@Electricalgenius? In this video, we'll take you through a detailed step-by-step guide on wiring a home distribution DB (Distribution Board) box.

Size determination, installation method and wiring mode

The distribution box is the central hub of the home circuit and the general control of our daily power consumption. It is an indispensable electrical equipment. If there



Do it Yourself

Do not direct wire these appliances, you need to have the plug as a means of disconnecting power. 2) A Thermostat with a clearly marked off position that directly opens all ungrounded conductors and



What's in a Main Service Panel (Breaker Box)? , A

Safety first! This guide provides an engaging, step-by-step overview of your residential wiring system and main service panel (breaker box). It includes



OEM/ODM
CUSTOMIZATION AVAILABLE



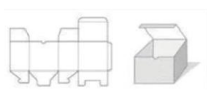
Full product customization



Structure customization



Brand customization



Packaging design

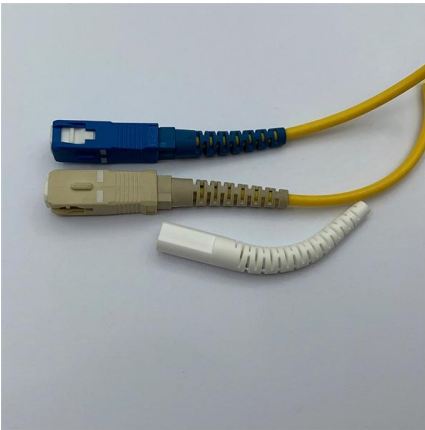
Distribution Box Installation: A Complete Guide to Safe

The distribution box, often referred to as a breaker box, fuse box, or electrical panel, is a critical component of any electrical system. It acts as the central hub for

Precautions for incoming and outgoing lines of meter

Therefore, when installing the meter box (small power distribution board), the size of relevant wires must be checked and can be installed only after meeting the





How to wire a DB - Distribution Board Wiring -

How to wire a DB - Distribution Board Wiring
Distribution Board or DB is an electricity supply system or a common enclosure that distributes the

The installation requirements for the distribution box

Learn how to install a distribution box safely and correctly. Covers wiring, placement, standards, and expert tips for a compliant setup.



Electrical Isolation in Distribution Board Safework

Activity: Temporary isolation of a local distribution board
Electricians are trained in safe isolation practices. Only qualified electricians carry out this work. The



Wiring diagram for a disconnect box

Learn how to read and understand a disconnect box wiring diagram in this helpful guide. Find step-by-step instructions and diagrams for clear understanding.



Remove unused wires from circuit breaker panel

However, I would like to replace a circuit breaker with an AFCI breaker and the unused wires really clutter up the box. They also use up all of the neutral bar connections.



How To Connect A Distribution Box

Learn how to connect a distribution box with this easy-to-follow, step-by-step guide. From tools and materials needed to common installation mistakes and solutions, this comprehensive article will



The Complete Guide to Distribution Box: Installation, Types & More

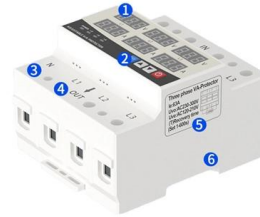
What's the difference between a distribution box and a sub-panel? A distribution box typically refers to the main electrical panel that receives power from the utility service. A sub-panel is



How to Connect a Distribution Box

Learn how to connect a distribution box with this easy-to-follow, step-by-step guide. From tools and materials needed to common installation mistakes and solutions, this comprehensive article will

GAIN AN IN - DEPTH UNDERSTANDING OF



- ① LED DISPLAY PANEL
- ② PROTECTOR OPERATION BUTTONS
- ③ NEUTRAL WIRE OUTPUT TERMINAL
- ④ LIVE WIRE OUTPUT TERMINAL
- ⑤ WORKING CURRENT AND VOLTAGE INSTRUCTIONS
- ⑥ FLAME - RETARDANT SHELL

How to Install a Distribution Box--A Comprehensive

Whether you are an electrical contractor or a construction brigade, knowing how to properly and safely install distribution boxes is the basis of



How to Safely Disconnect Wiring From an Electrical Disconnect

Follow expert safety preparation and step-by-step procedures to safely disconnect and reconnect electrical wiring systems.



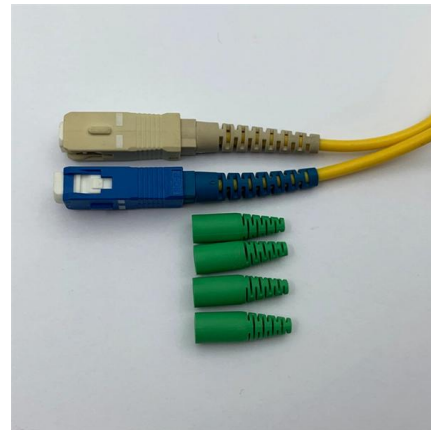
How to Wire a Disconnect Box: A Step-by-Step Guide

It is important to know how to wire a disconnect box correctly in order to prevent electrical accidents. This article will provide you with a step-by-step guide on how to wire a disconnect box. We'll start by



Wiring Diagram for AC Disconnect Box

By following the provided wiring diagram and instructions, you will be able to properly wire your AC disconnect box, facilitating the safe and efficient functioning of your air conditioning system.



Do it Yourself

If the appliance or device you are wiring is more than 50 ft away from the electrical panel, or not within sight of the electrical panel, you must have a means of disconnecting the power.

Disconnect Box Wiring Diagram and Installation Guide

The outgoing hot wires that run to the appliance are then connected to the corresponding Load terminals, often labeled T1 and T2, at the bottom of the switch. Fused Disconnects In a fused





Contact Us

For datasheets, pricing, or custom telecom energy solutions, please visit:
<https://www.koskolong.co.za>