



Adam Tas Corridor Energy

Distance of Single-Mode Optical Module





Distance of Single-Mode Optical Module



What Are SFP Transceiver Modules? , 1G & 10G Networking

Learn how 1G & 10G SFP Transceiver Modules, single-mode, multimode, BiDi optical solutions for enterprise, telecom, and data center networks.

A Deep Dive into the QSFP28-100G-ZR4 Optical

QSFP28-100G-ZR4 transceiver enables 100G data transmission up to 80km using single-mode fiber, ideal for long-distance, high-speed network



FTLF1326P3BTL Single-Mode Optical Module 6.14 Gbps

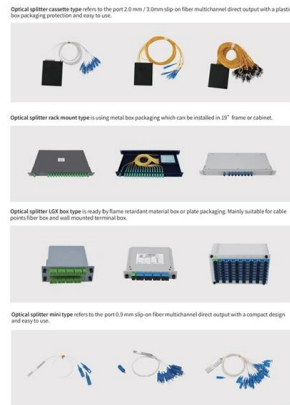
Introducing the FTLF1326P3BTL single-mode optical module, designed for high-performance networking. This compact SFP module operates at a data rate of 6.14 Gbps with a wavelength of

Understanding the Transmission Distance of Optical

Distance: Surpasses the 80km mark on single-mode fiber, a testament to its capability in long-



haul communications. In the complex world of



Fiber Optic Cable Distance: A Comprehensive Guide

Single-mode fiber optic cables are more suitable for long-distance, high-speed transmission than multimode fiber optics. For most applications, the

1.25G SFPs LXSM1310 Gigabit Singlemode 2 Fiber Module for single mode

For long-distance communications, this module uses 1310nm single-mode fiber to ensure low signal loss, support distance up to 40km, enabling a wide range of fiber optical networks.



MuxLab

Presentation The MuxLab 500970 SM10 is an SFP module designed for installations using single-mode optical fibre. It fits directly into an SFP port on compatible network equipment, such as a switch or



ECI Networks Arista QSFP28 100GBASE-LR4-ECI , Cendirect

ECI Networks Arista QSFP28 Module - For Optical Network, Data Networking - 1 x 100GBase-X Network - Optical Fiber - Single-mode - 100 Gigabit Ethernet - 100GBase-X10 km (6.21 Mile)



Fiber Optic Transmission Distance: Single Mode vs.

Learn how fiber optic transmission distance varies between single mode vs. multimode fiber. Discover key factors affecting fiber distance, bandwidth, and cost

Fiber Optic Only SFP-10G-LR Compatible 10GBASE SFP+ 1310nm

For 10 Gb/s LC duplex optical links on single-mode fiber Meets 10GBASE-LR (1310 nm, up to 10 km) specifications with DOM/DDR support Compatible with 10 Gb/s Ethernet ports using the SFP+ form



Dahua GSFP-1310T-20-SMF Gigabit Optical Module

Dahua GSFP-1310T-20-SMF Gigabit Optical Module The Dahua GSFP-1310T-20-SMF is a Gigabit single-mode SFP optical transceiver designed for long-distance fibre network connections. It is



Single-Mode Vs Multimode Optical Modules: Detailed Differences

Single-mode modules usually run at 1310 nm or 1550 nm using laser sources optimized for long-reach transmission cause single-mode transceivers use laser diodes and more precise optics, they



SFP Optical Module 1.25G Single Optical Fiber 20km

This is a standard SFP optical module. It uses a single mode optical fiber and the speed rate can up to 1.25Gbps, transmission distance up to 20 km.



SFP Optical Transceiver , SFP Optical Module , Perle

Perle SFP Optical Transceivers are hot-swappable, compact media connectors that provide instant fiber connectivity for your networking gear. They are a cost



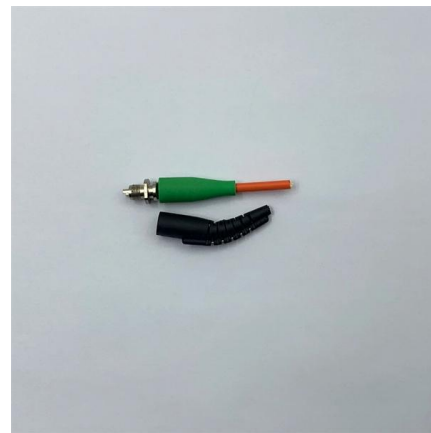


Single-mode fiber transmission distance and principle

Let's take a look at the transmission distance and principle of single-mode optical fiber.

Single-mode optical fiber

In fiber-optic communication, a single-mode optical fiber, also known as fundamental- or mono-mode, is an optical fiber designed to carry only a single mode of light



SFP-1GLHXLC moxa gigabit single-mode optical module transmission

SFP-1GLHXLC moxa gigabit single-mode optical module transmission distance 30KM

Cisco 40GBASE QSFP Modules Data Sheet

Cisco FET-40G Cisco FET-40G QSFP Modules are fabric-extender transceiver modules used to connect to fabric links (links between the fabric extender switch and the parent switch). The



Transceiver Optical Module Cisco 1.25G SFP 1310nm CWDM

Fiber Optical Transceiver, Optical Module Cisco Compatible CWDM 1.25G SFP 1310nm 10km Duplex LC/UPC Single Mode Specifications AOFPlus's CWDM 1.25G SFP fiber optical transceiver is great



Haile SFP-GE40-SM1310-A Gigabit single-mode single fiber optical module

Product Overview The Haile SFP-GE40-SM1310-A is a high-performance Gigabit single-mode single fiber optical module designed for reliable long-distance data transmission. Operating at 1.25Gbps,



10G Multi-Mode Optical Module

SFP+ transceiver that supports 10G connections up to 300 m using multi-mode fiber with a duplex LC UPC connector.



Transceiver Optical Module Cisco 1.25G SFP 1430nm CWDM

CWDM 1.25G SFP optical transceiver is a versatile network component. Operating within the 1270-1610nm wavelength range, the single fiber SFP CWDM transceiver module supports data rates of



Wavelength and Transmission Distance of Optical

The transmission distance of optical transceiver modules is divided into short distance, medium distance, and long distance. Usually, short-distance

Key Differences Between Single- Mode and Multimode

Compare single-mode and multimode optical modules by core size, distance, speed, and cost. Choose the right module for your network's needs.





Single Mode vs Multimode Fiber: The Ultimate Guide to

In modern communication networks, fiber optic cables are essential for transmitting data at high speed and over long distances. The two main

SFP+10GE-LH10-SM1310

SFP+10GE-LH10-SM1310 is a Huawei Compatible SFP+ Transceiver supporting 1.25-10.31 Gbps data rate in 10 km distance over Single-Mode Fiber SMF

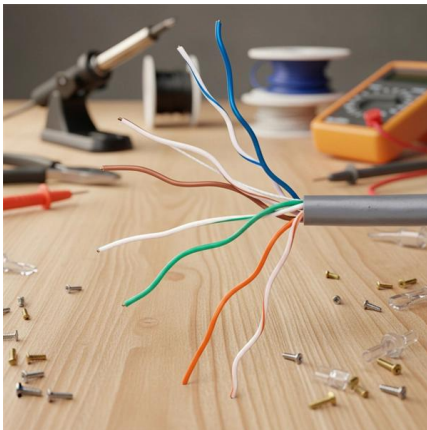


40KM 1550nm Single Mode Duplex Gigabit Optical Module LC/SC

Key attributes Type Fiber Optic Transceivers Connector Type LC Use FTTX Model Number BT-OC24-40+ Brand Name BTON Place of Origin Guangdong, China Warranty Time 3Years Data Rate

SFP+ Optical Transceiver Modules (10G-SR/LR)

Amphenol SFP Optical Modules o SFP+ Optical Modules from Cables on Demand are Now Available in both Short Range (SR) Multimode and Long Range (LR)



ECI Networks Avaya QSFP28 AA1405001-E6-ECI , Cendirect

ECI Networks Avaya QSFP28 Module - For Data Networking, Optical Network - 1 x LC 100GBase-LR4 Network - Optical Fiber - Single-mode - 100 Gigabit Ethernet - 100GBase-LR410 km (6.21 Mile)

Contact Us

For datasheets, pricing, or custom telecom energy solutions, please visit:
<https://www.koskolong.co.za>