



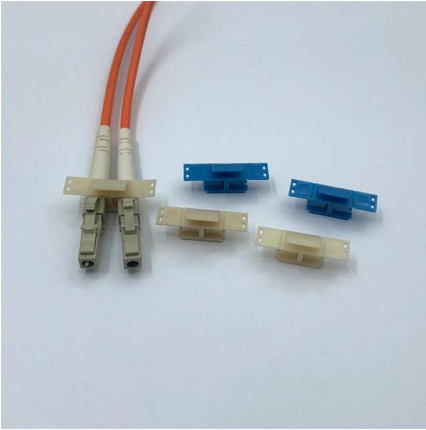
Adam Tas Corridor Energy

Distribution box after electricity meter





Distribution box after electricity meter

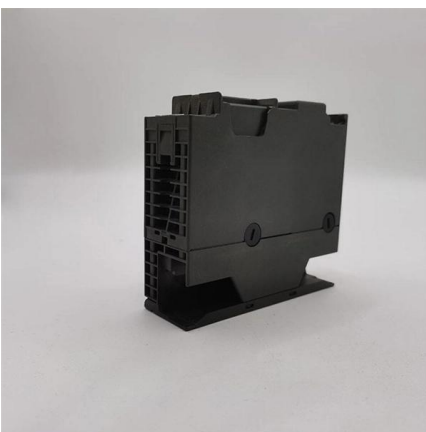


How to Install an Electric Meter Box 2026

Step-by-step guidance on installing an electric meter box safely--site prep, clearances, mounting height, wiring, grounding, permits, and code

What is an Electrical Distribution Box? A

Discover everything you need to know about electrical distribution box! Learn about types, components, and how to choose.



Where Is the Distribution Box Located and How to Find It

Learn where distribution boxes are typically located in homes and get step-by-step instructions for finding your electrical panel. Includes safety tips and

Mains Electric Box: What is it and what does it do?

The mains electric box is a square or rectangular box made from plastic or metal that is installed



somewhere in our homes. The incoming live electricity feed enters the



An Extensive Library of Self-Developed Products



Guidance on installing equipment within meter

The experts at NICEIC provide more detail on the installation of equipment in meter boxes. Electrical equipment associated with the consumer's

How Electricity Flows Through The Meter Box (Step by Step)

What determines the size of a cable used? Electricity flow from the power pole is fed directly to a meter box through a drop cable depending on the size of the load connected to it.



Wiring Diagram for Electric Meter Box

Final Thoughts on Electric Meter Box Wiring
Properly wiring an electric meter box is crucial for ensuring the safe and reliable distribution of electricity throughout a



The Main Electrical Panel & Subpanels

The electrical meter is mounted at the main electrical panel. From here, power is distributed to subpanels and circuits throughout the house. Once

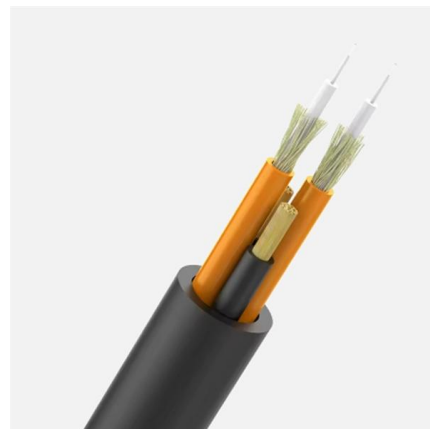


Where Is the Distribution Box Located and How to Find It

Bottom Line Up Front: Your home's distribution box (electrical panel) is typically located in the basement, garage, utility room, or mounted outside near

Single phase energy meter wiring from pole to Distribution box , Energy

In this i have shown how to do a wiring of energy meter from utility pole or electric pole to distribution box with accl . ACCL is use for switching the supply between transformer and DG .



How Electricity Gets from the Meter to Your Breaker Box (Keeping the

Once electricity flows through your meter, it heads straight for your breaker box (also known as the electrical panel or distribution board). Think of it as the control room of your house's electrical system.



Distribution boards components

Distribution boards (generally only one in residential premises) usually include the meter (s) and in some cases (notably where the supply utilities impose a TT earthing system and/or tariff



Where Can I Put My Electrical Meter Box

Learn where to install your electrical meter box for safety, easy access, and regulation compliance with expert tips and maintenance advice.

Difference between meter box and distribution box

The meter box is a special box for electricity metering, such as ammeter, watt hour meter, power meter, etc. The distribution box is a special box for low-voltage





How to Install an Electric Meter Box

What Is an Electric Meter Box? An electric meter box is a case that has an electric meter that keeps the track of energy you use. It protects the meter

Distribution Boxes Types - The Complete Guide

A commonly used distribution box contains doorbells, earth leakage devices, timers, or contact breakers. However, the distribution boxes have

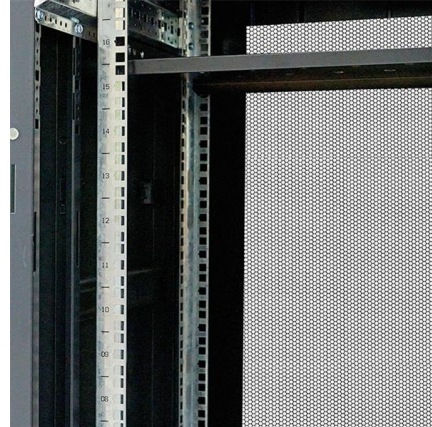


Electrical Panel Box: Anatomy & How It Works , Penna

An electrical panel box or breaker box controls the entire electricity in your home, so it's important to know its components and how it works.

What is my equipment and what is my electricity

As the homeowner, the meter box is your responsibility, so you would usually need to pay for any repairs or replacements. However, if the damage was caused by the



Meter Box vs Distribution Box: 8 Key Differences You Must Know

Understand the difference between meter boxes and distribution boxes, their roles, safety functions, standards, and correct applications in electrical systems.



Responsibilities for electricity and gas supplies in the UK

Responsibilities Electricity Equipment It is difficult for a customer to know who is responsible for what equipment in the meter cupboard and on the



Understanding Distribution Boxes: A Comprehensive Guide

Learn what a distribution box is, its types, and how to choose the right one for your project. Includes clear examples and expert tips.





Amazon : Power Distribution Box

Add to cart Power Distribution Box, 110V Electricity Meter Electrical Box with NEMA 5-20 Power Outlet Pane, IP54 Electrical Breaker Socket Distribution Box for Construction Sites, workshops and

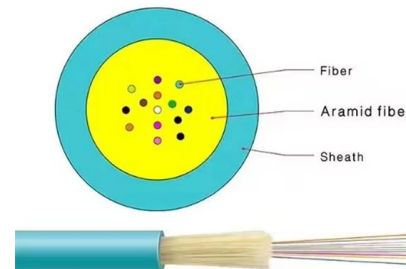


full Wiring of the Distribution Board From Energy Meter to

This video shows the full Wiring of the Distribution Board From the Energy Meter to the Consumer Unit. Distribution Board also known as a "Panel Board", "Switch & Fuse Board" or

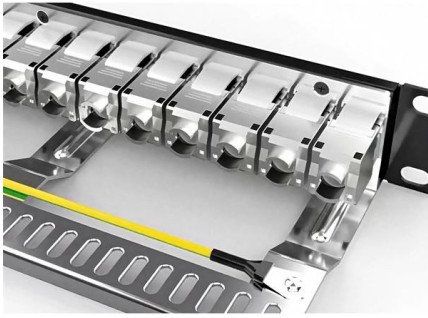
Distribution Boxes: Types and Functions

A distribution boxes acts as the load center and main distributor of electrical power within a building. Also called a distribution board, panel board,



How to Install a New Electric Meter Box

The electric meter measures the amount of electricity that is used by your home or business, which tracks it by a rate of kilowatts per hour as is the



Fix Prepaid Electricity Meter Errors Fast - Joburg Guide

Also read: Who Supplies Electricity in Johannesburg: City Power or Eskom? If your prepaid electricity meter refuses to load a token, shows strange



Difference between meter box and distribution box

The electricity meter installed in the electricity meter box belongs to the "metering box", which has anti-theft devices according to different requirements;

Wiring of the Distribution Board From Energy Meter to

How to Wire a Distribution Board? Distribution Board also known as "Panel Board", "Switch & Fuse Board" or "Consumer Unit" is a box installed in the building





Contact Us

For datasheets, pricing, or custom telecom energy solutions, please visit:
<https://www.koskolong.co.za>