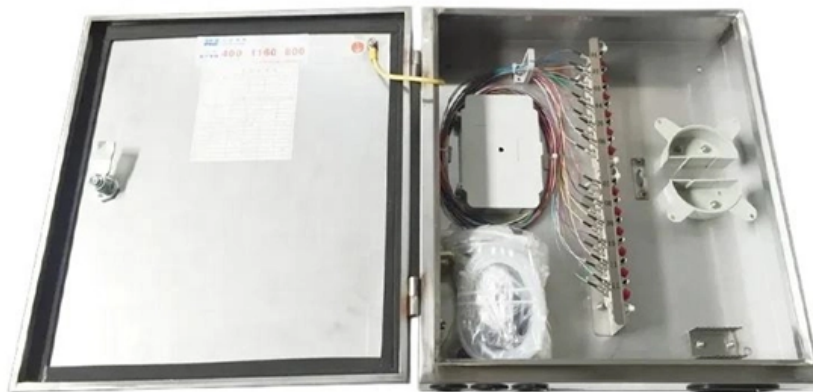




Adam Tas Corridor Energy

Distribution box track socket configuration





Overview

If opposite polarity is needed unscrew and remove cover, rotate connector legs to desired polarity, place cover back and tighten the. The system shall be designed primarily for overhead power distribution of electrical power. A Power Track is a modular power distribution system that allows electrical outlets (often referred to as track sockets) to be moved along a track installed on walls, desks, or other surfaces. This system offers flexibility in placing outlets wherever they are needed, without the need for rewiring. Upon receipt of a Vertiv™ Liebert® MBX Busway System, the installer should perform the following steps to ensure a top-quality installation. Choose the right box based on environment (indoor/outdoor), load capacity, and durability.



Distribution box track socket configuration



Multi Option Plug & Socket DB , Modular Distribution Boards

The Multi Option Plug and Socket Distribution Box (DB) is an electrical enclosure designed to offer flexibility and versatility in distributing electrical power across various circuits. It incorporates multiple

Liebert® MBX Busway System Installer/User Guide

Busway track pieces must be connected to another track piece, an End Cap or a Joint Pack in order to complete an installation. Busway tracks come in 3-13 ft. sections and can be 250A, 400A, 600A or



Area distribution boxes with connectors

Additional sockets can be connected quickly by adding a mixed cord (RJ 45-stripped) between the box and the RJ 45 socket, or by adding an RJ 45 only cord for an even quicker solution.

Honeywell Building Technologies

Hier sollte eine Beschreibung angezeigt werden, diese Seite lässt dies jedoch nicht zu.



TRACK BUSWAY INSTALLATION, OPERATION, AND

Contact your Starline Representative today to add services to your Track Busway order, or download the detailed Statement of Work documents at downloads.starlinepower.com/services.



Version: 2.2.1 Release: July 2013

1. INTRODUCTION Mainline's track-based power distribution system means power wherever you want it. You can reposition sockets simply and safely anywhere along the track.



Power Distribution

Dual Circuit Power Track is supplied with 1 standard and 1 clean circuit in the same Power Track housing so can be used with standard Earth and clean Earth Tap-offs as well as combined dual





Busbars: why you should install underfloor power , CMD

What is a busbar? The type of busbar seen in many offices is a power distribution system. It looks like a metallic track featuring a series of plug sockets that are



Small distribution box installation steps

The steps to install a small distribution box include selecting a suitable location, installing the base, placing the distribution box, connecting the

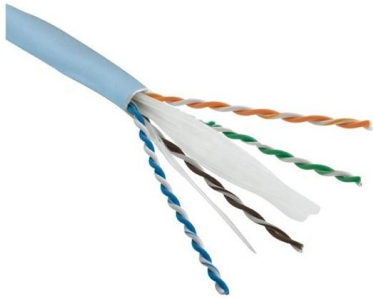
26 20 00

Vertical distribution in multiple story buildings: made with metal conduit in fire-rated shafts, with metal conduit extending through shafts for minimum distance of 150 mm 6 inches. Firestop conduit which



MX Power Track System world's most flexible power outlet

The MX concept: a mobile electrical outlet. A flexible, design and secure power supply system designed for all your interiors. Move, add or remove your sockets according to your needs along an



Understanding Distribution Boxes: A Comprehensive Guide

A distribution box, also known as a power distribution box or electrical distribution box, is used to distribute electrical power safely to multiple



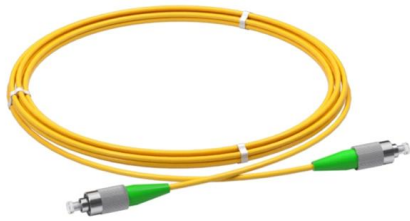
The Ultimate Guide to Power Track Sockets: Revolutionizing Your

Power track sockets offer unmatched versatility, simplicity, and safety, making them a revolutionary approach to electrical settings. The essential features, types, advantages, uses,

Track System Installation Guide

Place track rail under junction box in desired position, rotate ground clip to insert track rail, and push it into clip, until ground clip is securely inserted into track side grooves.





The installation requirements for the distribution box

Learn how to install a distribution box safely and correctly. Covers wiring, placement, standards, and expert tips for a compliant setup.

Electrak underfloor to workstation

Access to power is provided along the busbar length by simply plugging tap-off units into shuttered socket outlets. These tap-off units feed all types of conventional floor service outlet boxes or feed



Single Phase Distribution Box (DB) Wiring Diagram and

Hey, in this article we are going to see the Single Phase Distribution Box Wiring Diagram and Connection Procedure. A distribution board or

Raised Floor Systems , MK Electric by Honeywell

RAISED FLOOR SYSTEMS Raise the bar on raised floor systems. Our systems install easily and are packed with time saving features. They support Cat 6 and 7



Distribution Box Wiring Steps

?Preparation phase? ?Box installation?: Make sure that Distribution box has been correctly installed and fixed. ?Material preparation?: Prepare the required cir



Track Busway Power , USA TrackBusway

Explore bus plugs, tap-off units, outlet boxes, and power drops for Track Busway. Deliver power from the busway run directly to equipment below.

DATA ADJUSTABLE, EASY TO USE



SET INCREASE DECREASE POWER SWITCH

The Ultimate Guide to Circuit Breaker Wiring

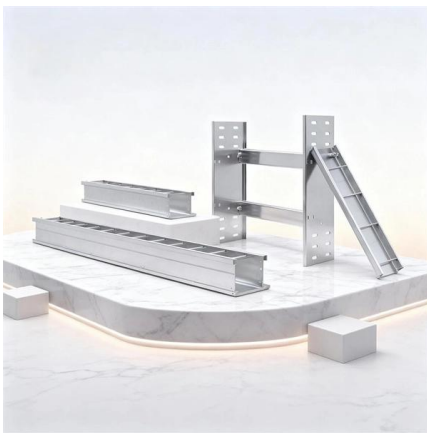
Messy distribution boxes are dangerous and very hard to fix. This guide shows you how to organize circuit breaker wiring properly. You will learn to build a safe,





Power track system installation guide (2024)

Power track systems with distributed electrical systems have revolutionized the age-old way of managing power needs in modern homes and offices, and this article serves as an in-depth guide on



TRACK BUSWAY INSTALLATION, OPERATION, AND

Contact your Starline Representative today to add services to your Track Busway order, or download the detailed Statement of Work documents at downloads.starlinepower.com/services

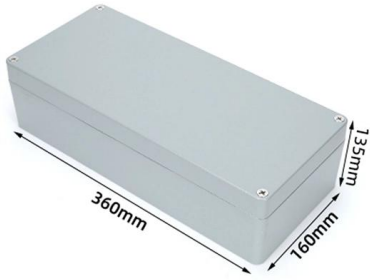
How to Choose a House Distribution Box , CHINT global

This article guides you through selecting a distribution box that is both affordable and safe, emphasizing key features, configuration, and practical



Distribution Box and Selection Guide

Distribution Box Selection Guide This guide provides information on how to select the appropriate Distribution Box for Electric project. If you have any



Contact Us

For datasheets, pricing, or custom telecom energy solutions, please visit:
<https://www.koskolong.co.za>