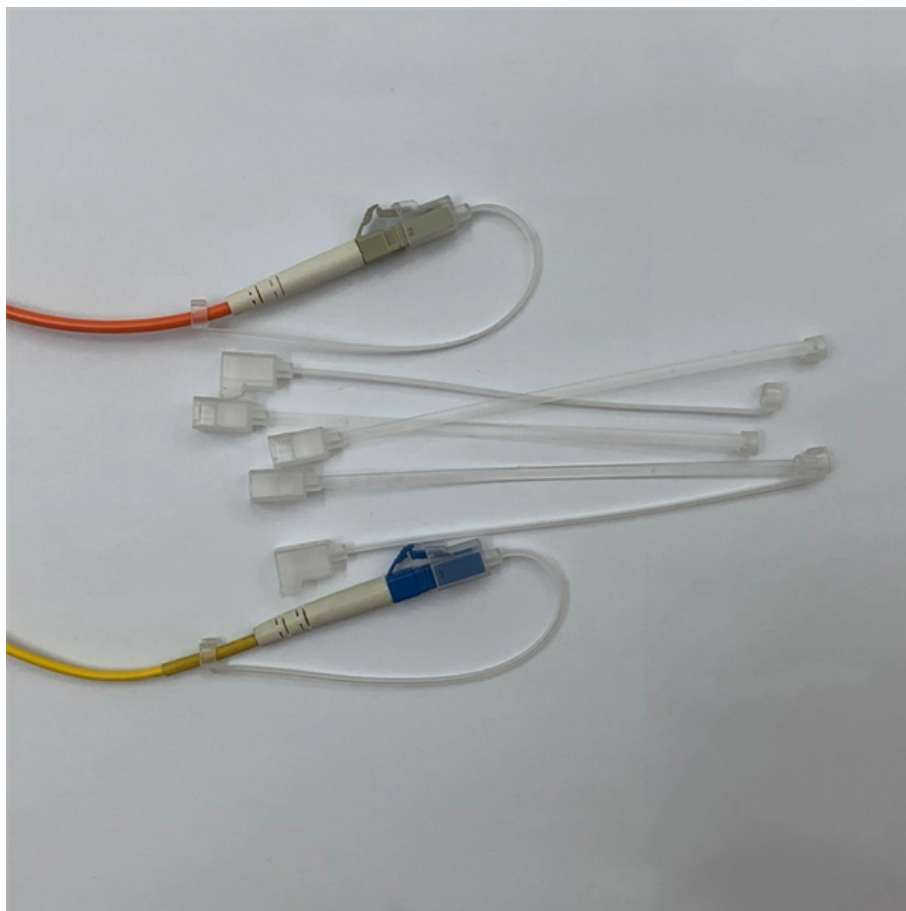




Adam Tas Corridor Energy

Distribution box tripping point





Overview

It can occur due to overloaded circuits, short circuits, or ground faults.

Solution: Identify the Cause: Check if the breaker is tripping due to overloading. Frequent tripping of your distribution box is a critical alarm, not just an annoyance. For facility managers, electricians, and project owners operating overseas—from industrial plants in the Middle East to solar farms in Southeast Asia—these unexpected shutdowns mean costly downtime, safety risks. A systematic diagnostic procedure gives you a step-by-step approach to inspect, measure, and analyze frequent tripping in low-voltage distribution. Is the circuit breaker that keeps tripping dangerously?

, If a circuit breaker trips frequently, especially under normal or low loads, it may indicate a faulty or worn-out circuit breaker! We need to solve this problem in time. In order to prevent the armature of the high-voltage system from being released by the instantaneous loss-of-voltage tripper after lightning, the following three technical solutions have been proposed after analysis: Tie the armature of the electromagnetic loss-of-voltage release to prevent its.



Distribution box tripping point

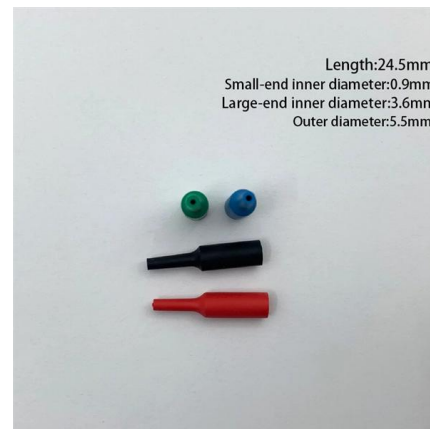


Breaker Keeps Tripping? Here's What It Means (And

Is your circuit breaker constantly tripping? Discover the top reasons why it happens, what it means for your home's safety, and when to call a licensed

Common Issues with Distribution Boards and How to Address Them

Issue: Frequent tripping of circuit breakers is one of the most common issues in distribution boards. It can occur due to overloaded circuits, short circuits, or ground faults.



Common Issues with Distribution Boards and How to Address Them

Distribution boards are crucial to any building's electrical system. They distribute electricity to different circuits, ensuring that power flows smoothly and safely throughout the

Decoding Your Breaker Box: Amperage & Tripping Circuits

Decoding Your Breaker Box: A Beginner's Guide to Amperage and Tripping Circuits If you've ever



been plunged into darkness because one of your breakers unexpectedly decided to trip, you're not alone.



A Definitive Guide To Distribution Boxes

The distribution box acts as the center of power distribution, distributing electricity to all connected devices. A distribution box, also known as a distribution board, panel board, breaker



Why is there always a switch trip in the home distribution

There is always a switch trip in the distribution box. There are only five possible reasons. Let me give you a detailed explanation. 1. Switch damage



Reasons for Frequent Circuit Breaker Tripping in Distribution Boxes

Your electrical distribution box (commonly called a breaker panel) contains multiple circuit breakers that control power flow to different home areas. Frequent tripping isn't just inconvenient - it indicates



Three reasons for the tripping of the small power distribution unit

In order to protect personal safety, the protection device will trip the small power distribution unit to cut off the power supply. These are common causes of electrical box tripping, and regular inspection and

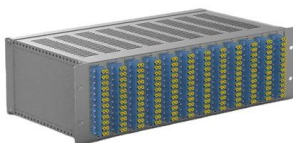
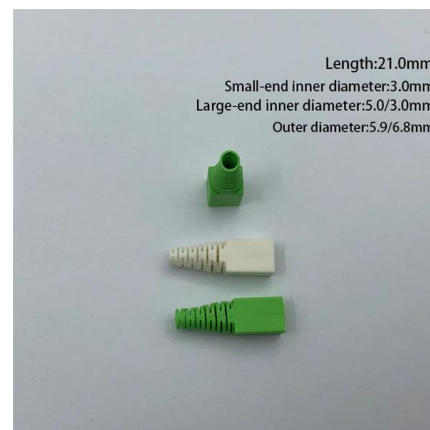


LED Display Power Box Keeps Tripping? Causes and Fixes

Causes and Fixes A Practical Guide to Solving Frequent Power Trips Frequent tripping of the power distribution box is one of the most common issues in LED display systems, especially in outdoor and

Circuit Breaker Tripping? Causes & Solutions Guide

Struggling with a tripping distribution box? Our 2026 guide offers quick fixes for overloads, short circuits, and more. Restore stable power in 30 mins!



RCD tripping: Tripped Circuit Breaker and What to do?

The most common reason for an RCD or GFCI tripping is moisture entering the circuit wires, a light fixture outside or somewhere else like the main fuse box. The



What are the situations of small power distribution unit tripping? How

Overload: When the load connected to the circuit exceeds the load capacity of the distribution box and circuit design, it will cause overload tripping.
Short circuit: When a direct connection occurs between



RCCB Tripping: Causes & Troubleshooting Guide

Knowing the common causes of tripped RCCBs allows us to take proactive steps to prevent potential hazards. In this article, we explore the various

Fuse Box Keeps Tripping & How To Fix It , HTS Electrical

HTS Electrical Ltd have all the answers to your burning questions about how to fix a tripped fuse box and identify a faulty or misused appliance.



Circuit Breaker Tripping? Find the Cause , AHS

Does your circuit breaker keep tripping? An overload, a short circuit, or a ground fault could be the culprit. Read more about each scenario here.



How to Prevent Circuit Breaker from Tripping

Replace the Tripping Circuit Breaker Replacing the tripping circuit breaker is one of the most effective steps to help prevent a circuit breaker from tripping. A circuit

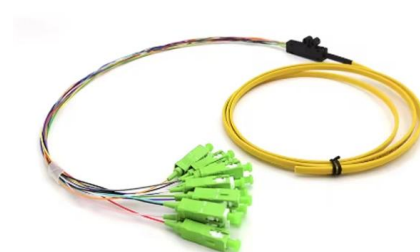


Complete analysis of the cause of circuit breaker tripping

Determine whether the tripped air switch is the main switch in the distribution box at home or the branch outlet switch.

Junction vs. Distribution vs. Terminal Box: The "Start,

Confused by junction, distribution, and terminal boxes? They often look identical, but their roles are totally different. Here is the simple "Start, Middle,





Selection of a circuit-breaker

Example What rating (I_n) should be selected for a iC60 N? Protecting a circuit, the maximum load current of which is estimated to be 34 A Installed side-by-side with other CBs in a

Circuit Breaker Trips: Troubleshooting Your Breaker Box

Your circuit breaker might be tripping because of a circuit overload, short circuit, or ground fault. Troubleshoot your breaker box with these helpful tips.



Circuit Breaker Keeps Tripping? 5 Possible Reasons

If a circuit breaker keeps tripping, especially under normal or low loads, it may indicate a faulty or worn-out circuit breaker!

Why Your Circuit Breaker Keeps Tripping

Learn why your circuit breaker keeps tripping and how to fix common issues safely with simple steps you can follow at home.



Nuisance Tripping of Circuit Breakers and How to

Nuisance tripping of circuit breaker is a common problem in many commercial and industrial installations. Read more as we discuss the



TP) Best Practice Guide

The initial configuration is performed using the Out-of-Box Experience (OBE) wizard; this script prompts the user for the needed and essential configuration values. Typically, the baseline



What Is an Electrical Distribution Box? A Complete Guide

What Is an Electrical Distribution Box? An electrical distribution box serves as a centralized unit for distributing electrical power within





Systematic diagnostic procedure for frequent tripping of low-voltage

Follow a systematic diagnostic procedure to identify and resolve frequent tripping in low-voltage distribution boxes, ensuring safety and reliability.



Contact Us

For datasheets, pricing, or custom telecom energy solutions, please visit:
<https://www.koskolong.co.za>