



Adam Tas Corridor Energy

Distribution box trips due to high power consumption





Distribution box trips due to high power consumption

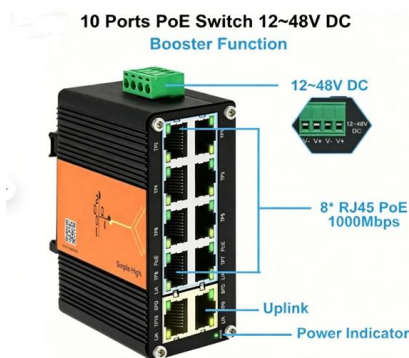


Circuit Breaker Keeps Tripping? 5 Possible Reasons

If you notice that the circuit breaker in the distribution box has a burning smell, or feel that the circuit breaker is hot, you need to immediately turn

Common Issues and Troubleshooting for 3 Phase Electrical Distribution Boxes

Always consult a licensed electrician when dealing with complex or hazardous electrical issues. For businesses or events requiring high-quality and customizable power distribution

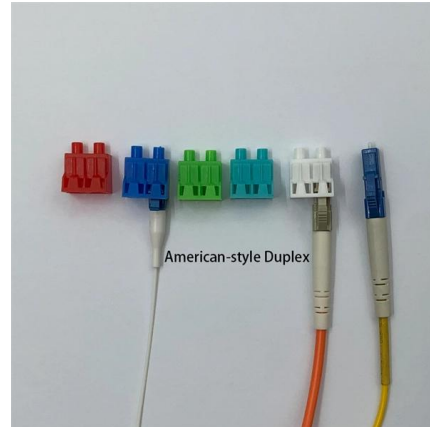


Why is there always a switch trip in the home distribution

There is always a switch trip in the distribution box. There are only five possible reasons. Let me give you a detailed explanation. 1. Switch damage

Electric power distribution

A 50 kVA pole-mounted distribution transformer
Electric power distribution is the final stage in the delivery of electricity. Electricity is carried from the transmission



Nuisance Tripping of Circuit Breakers and How to

Despite the good power system studies, nuisance tripping of circuit breakers can affect power system reliability. To overcome this, preventions are



LED Display Power Box Keeps Tripping? Causes and Fixes

Causes and Fixes A Practical Guide to Solving Frequent Power Trips Frequent tripping of the power distribution box is one of the most common issues in LED display systems, especially in outdoor and



Circuit Breaker Keeps Tripping? 5 Possible Reasons

The circuit breaker is basically placed in the distribution box. Its main purpose is to protect the rear load equipment. The working principle is to interrupt



Power Distribution Box Essentials: Functions, Types

Easy distribution via Power distribution box + Longer Lifespan of Equipment: Electrical appliances and machines are made to last longer due to



What causes high inrush current in transformers, and how can it be

When a transformer is energized, it draws a large current for a few cycles to establish the electromagnetic field. During this time, the transformer load has little to no effect on the initial transformer inrush.

Low voltage Distribution Box Monitoring

In this Paper, the primary focus is on the distribution box health monitoring from which load power distribution monitoring is done. Distribution box is one from which power is distributed to low level.



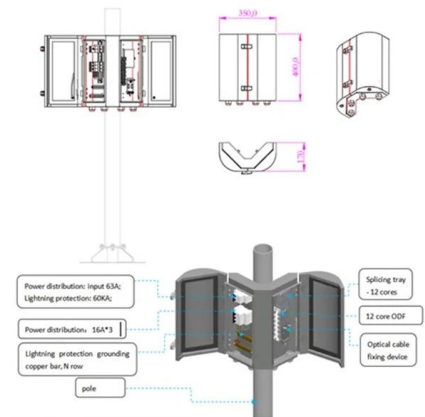
Why Your Circuit Breaker Keeps Tripping (And What Happens If You

While breakers are designed to protect your home from electrical overloads and hazards, frequent trips can be frustrating and indicate underlying issues. Here are the most common reasons



Reasons for Frequent Circuit Breaker Tripping in Distribution Boxes

Your electrical distribution box (commonly called a breaker panel) contains multiple circuit breakers that control power flow to different home areas. Frequent tripping isn't just inconvenient - it indicates



What are the situations of small power distribution unit tripping? How

Check the load: confirm whether the use of electrical appliances in the home exceeds the load capacity of the distribution box, reduce the load appropriately or increase the appropriate power supply.

My Circuit Breaker Keeps Tripping: 9 Reasons why

My Circuit Breaker Keeps Tripping: 9 Reasons why. A circuit breaker is a small device in your electrical panel, fuse box, consumer unit or trip switch box that





What Causes Circuit Breaker Tripping Due to

Understanding the reasons why circuit breakers trip due to overcurrent or overvoltage can help maintain the safety of household and

Preventing AC MCB Tripping: 5 Common Causes & Solutions

Overload Due to High Power Consumption One of the main reasons an AC MCB trips is an overload--when the AC uses more electricity than the MCB can handle.



Circuit Breaker Tripping: Causes and Solutions

Overloads happen when the electrical load on a circuit exceeds its designed capacity. For example, commercial and industrial buildings often power large HVAC systems, specialized machinery, lifts,

What is the problem with cascading trips in electrical

Learn why upstream breakers trip before downstream ones--mismatched settings, aging devices, or lack of time-current coordination.



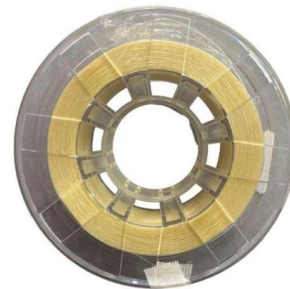
Why Do Circuit Breakers Trip? Common Causes and Fixes

When a circuit breaker trips, it's doing its job to cut power to a circuit experiencing an issue. But why does this happen? Let's explore the common causes of tripped circuit breakers and



What Causes Circuit Breakers to Keep Tripping

Circuit breakers protect a house or building from electrical overload, which can not only damage appliances but cause a fire. There are several factors



Power Quality Problems in Power Distribution System

Learn about what power quality is and different power quality problems in the distribution network such as single phasing, voltage fluctuation, power factor,





5 Reasons Why Your Breaker Keeps Tripping - And

Discover why your circuit breaker keeps tripping and how to fix it. Find out the most common causes of power outages and how to prevent them from happening



What are the common problems of distribution boxes?

In summary, the distribution box may encounter a variety of problems during operation, which not only affect the normal operation of the power system,

Why does my fuse box keep tripping

A fuse box typically trips due to overloaded circuits, short circuits, ground fault surges, or faulty wiring. For instance, circuits should not exceed 80%



Contact Us

For datasheets, pricing, or custom telecom energy solutions, please visit:
<https://www.koskolong.co.za>