



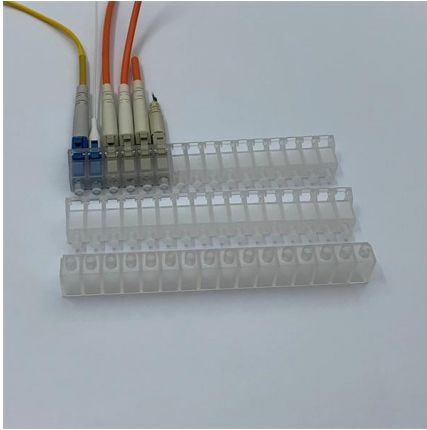
Adam Tas Corridor Energy

Distributor s Special Optical Cable G 657A1





Distributor s Special Optical Cable G 657A1



200mm Bending Insensitive Non-dispersion Shifted

SDGI 200mm G.657A1 can provide the best transmission performance in the full range of 1260nm-1625nm, especially in the L-band long-wavelength window

High-Speed G.657A1 Fiber Optic Cable for Indoor FTTH Easy

Indoor FTTH High Speed Optic Fiber Internet The optical feber unit is positioned in the centre.Two parallel Fiber Reinforced Plastics (FRP)are placed at the two sides. Then the cable is completed with



G657A1 fiber optic cable with LC/UPC to LC/UPC

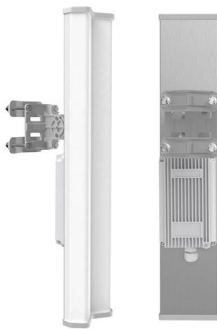
G657A1 Duplex Single-Mode (SM) fiber optic cable. It features two LC/UPC connectors at both ends. 100% verified, premium-quality, LSZH (Low Smoke Zero

G.652.D vs G.657.A1/A2 Optical Fibers : Which Is Better

A practical guide for selecting between G.652.D and G.657 fibers. Compare specs, bending loss,



MFD, PMD, and cost considerations to make the

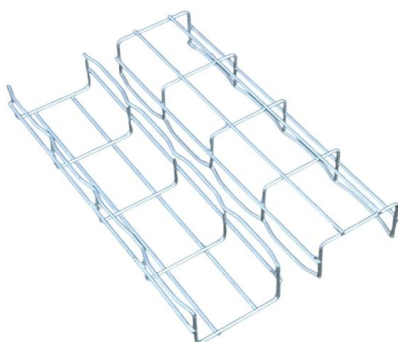


G.657 : Characteristics of a bending-loss insensitive single-mode

The file initially posted on 13 February 2017 was replaced on 11 May 2017 to update the History section. Superseded

g 657a1 200 micron optical fiber

Find high-quality g 657a1 200 micron optical fiber with low attenuation, high bandwidth, and customizable options. Click to explore verified suppliers, competitive pricing, and fast delivery for



4 0GB 5 km G B 10 k m 0G 7 0 B HIGH 100THz G OS2 Fibre Optic Cable

briticom , briticom@briticom , +44 (0)1604 434 186



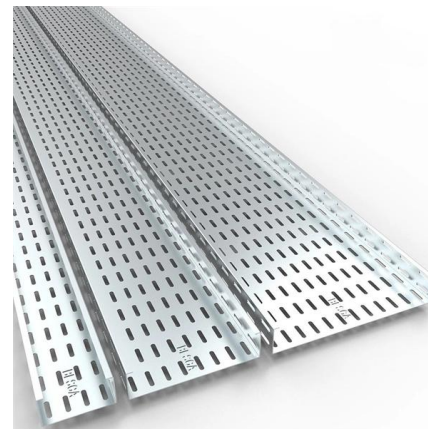
Customized G.657A1 Compatible G.652D

Low attenuation and dispersion and bending insensitive, compatible with G.652.D and G.657.A1 optical fiber, fits the operation over the full optical spectrum from



Indoor/Outdoor Cable, 9/125 SM G657A1, 16 Fiber,

The singlemode G657A1 fiber distribution cable features a smaller outer diameter,



Briticom Fibre Optic Cable G657a1

Fibre Optic Cable SPEED EasyBand® G657A1 Single Mode Fibre 0 Description EasyBand® bending insensitive single mode fibre encompasses all the features



Optical Fiber Single-Mode Fiber G.657A2 (208)

Datasheet: GD059734v7 SPECIFICATION FOR ENHANCED LOW MACROBENDING SENSITIVE, LOW WATER PEAK SINGLEMODE OPTICAL FIBER ITU-T RECOMMENDATION G.657A2,



Choosing the Right Single-Mode Fiber: G.652D vs.

As fiber optic networks evolve to support 5G, FTTH, and data center interconnects, selecting the right single-mode fiber is critical. Three widely used

12 Colors G.657A1 optical fiber - GDTXCABLE

G.657.A1 including the IEC60703-2-50 type B6.a1 Optical Fibre Specification.



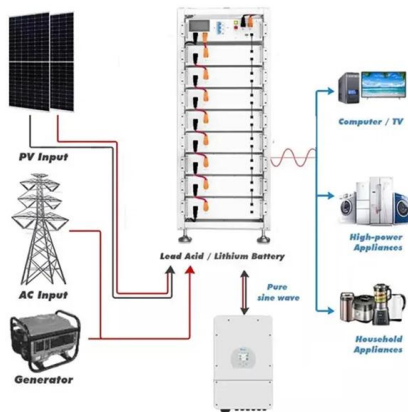


G657 Fiber Splicing

Benefits: o ITU-T G.657 optical fibre cable offers flexible characteristics for easier deployment in streets, buildings and homes. o ITU-T G.657 optical fibre cable

Monomode fibra óptica fiber optical fiber single mode

Zion Communication offers high-quality Monomode Fiber Optic Cables, including G.652.D and G.657.A1 fibers. These single-mode cables provide reliable signal

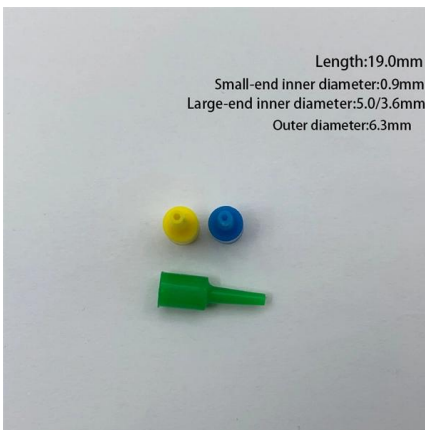


G.657.A1 Single Mode Fiber Optical Fiber Purchase Specification

ast right-hand digit when considering the specification limits. This method is in accordance with the rounding method of ASTM Practice E29 (Standard Practice for using significant di.

Fibre Optic Cable syBn G657A1 ine oe ire

Ofering good resistance to additional losses due to low macro-bending in the 1625nm wavelength region. This not only supports L-band applications but also allows for easy installation without



Specification Sheet G657A1 Air Blown Optical Fiber Cable

G657A1 Air Blown Optical Fiber Cable Registered Office E 1, MIDC Industrial Area, Waluj, Aurangabad, Maharashtra, India - 431 136

G.652D vs G.657A1 vs G.657A2: The Complete Guide

Conclusion In summary, the G.652D vs G.657A1 vs G.657A2 debate comes down to physical routing requirements rather than optical incompatibility.



G.657A1 Self-Supporting Drop Cable Specs

The document provides specifications for two types of self-supporting drop cables (DROP CABLE-1 and DROP CABLE-2) using G.657A1 fiber, detailing their



FS Community

Hier sollte eine Beschreibung angezeigt werden, diese Seite lässt dies jedoch nicht zu.

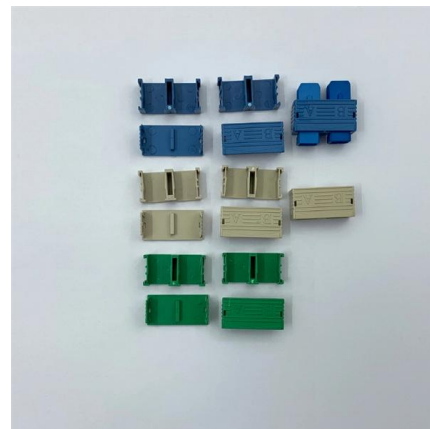


Ficha_AR-1FTDSPE-xxF-G652D-G657A1-G555

Optical fibre cables supplied in compliance with this specifications is capable to withstand the typical service condition for a period of twenty-five (25) years without detriment to the operation

Spec G657A1 Fibre Optic Cable

EasyBand® G657A1 bending insensitive single-mode fibre encompasses all the features of FullBand® fibre and provides good resistance to macro-bending. It



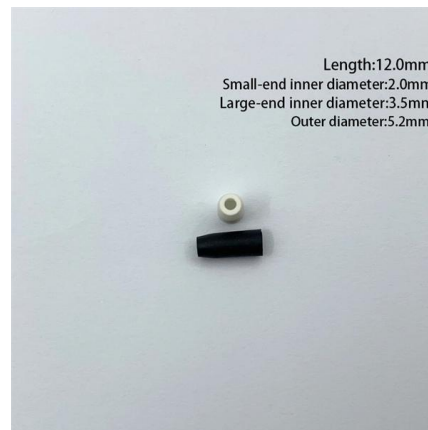
DRAKA U-DQ (ZN)BH 4E universal fibre optic cable (4 fibre G.657A1)

Universal cables from the DRAKA series are gel-filled fiber-optic cables intended for horizontal connections inside and outside buildings. Due to their small size and flexibility, the cables are ideal



Difference between g652d Vs. g657a1 Vs. g657a2

Learn the differences between G652D, G657A1, and G657A2 fiber optics. Compare their features, applications, and benefits to choose the best one



FTTH G657A1 SM LSZH Fiber Optic Drop Cable

The 1 Core FTTH Self-support G657A1 SM LSZH Fiber Optic Drop Cable is designed for high-performance network transmission with its unique flexural optical fibers, providing greater bandwidth

FIG8 Drop Cable G.657A1 Datasheet , PDF

The document details the specifications and characteristics of two types of self-supporting drop cables (DROP CABLE-1 and DROP CABLE-2) using G.657A1





Contact Us

For datasheets, pricing, or custom telecom energy solutions, please visit:
<https://www.koskolong.co.za>