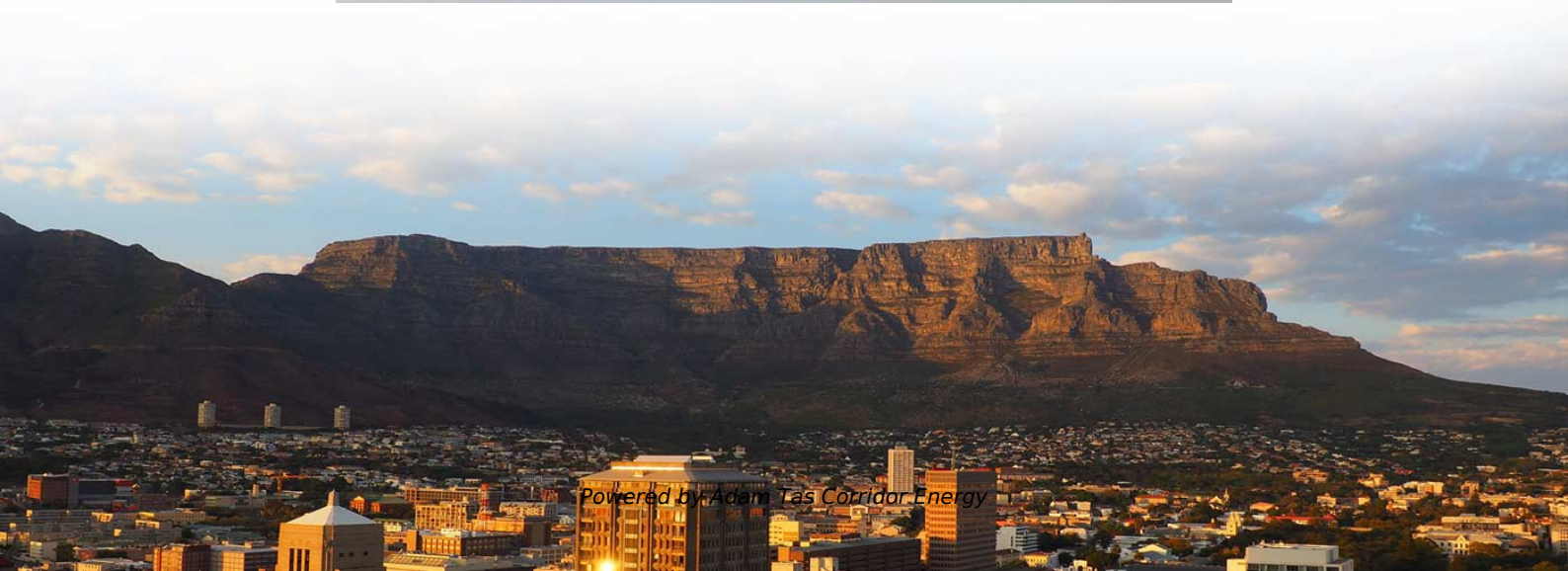




Adam Tas Corridor Energy

Do fiber optic splices need to be waterproof





Overview

These enclosures must shield fiber connections from water, dust, and heat or cold. They also work well in changing temperatures, keeping your network running in tough weather. In this technical guide, we will explain exactly what the IP68 waterproof standard means, why it is critical for telecommunications, and what structural features define a professional-grade enclosure. What is an IP Rating?

Decoding "IP68" "IP" stands for Ingress Protection, a standard defined by. The water ingress and sealing treatment of the fiber cable splice closure, which is called fiber optic enclosure, used in underground optical cables are the key points of optical cable line construction and maintenance.



Do fiber optic splices need to be waterproof



How to Use Fiber Optic Splice Closures for Maximum

Fiber Optic Splice Closure protects splices from water, dust, and impact, ensuring strong signal integrity and reliable fiber optic network performance.

The Ultimate Guide to Fiber Optic Splice Closures:

Q: How do fiber optic splice closures protect the splices? A: Fiber optic splice enclosures protect them by creating a closed container without access to



What is a Splice Closure in Fiber Splicing?

In fiber optic networks, PON and 5G backhaul deployments, fiber splicing creates physical connection points between fiber cables. These splices

4 Tips You Need to Know About Fiber Optic Splice Closure

Choosing the appropriate fiber optic splice closure is paramount for maintaining the



integrity and functionality of fiber networks. By focusing on these



How to Seal and Waterproof Direct Buried Optical Fiber

If water enters the direct buried optical cable closure and is not treated in a short period of time, the loss at the optical fiber joint will increase. The

The Ultimate Guide to Fiber Optic Splice Closures:

Regarding modern communication, fiber optic networks are the central means behind everything from fast internet services to sophisticated



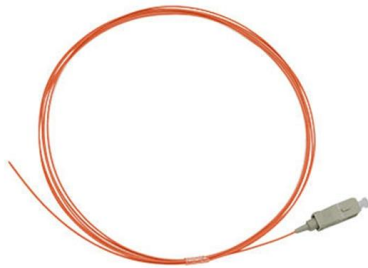
Fiber Optic Splice Closure Guide: Types & Selection Tips

Fiber optic splice closures offer numerous benefits that ensure the reliability and longevity of your network: Protection: They shield fiber splices from environmental factors like moisture, dust,



Outdoor Waterproof Horizontal Fiber Optic Splice Closure

They shield 72 fragile optical fibers from harsh elements. Internal trays organize 4 cable ends for safe routing. Each closure offers 99.9% protection against water.



Fiber Optic Closure Guide , FiberMania

Fiber optic closures protect and organize cable splices, ensuring long-term stability in both outdoor and indoor networks. This guide explains their

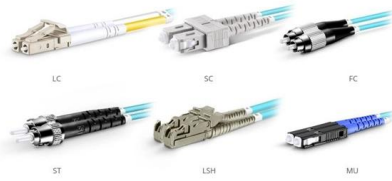
2025 Guide to Fiber Optic Splice Enclosures for Extreme

Ensure reliable networks in extreme weather with fiber optic splice enclosures. Learn about materials, weatherproof ratings, and installation tips for



Dome Fiber Optic Splice Closures , Wholesale IP68

Overview: Dome type optical fiber splice closures, also known as vertical closures, are essential components for protecting and managing fiber optic splices in



OM3 Fiber Patch Cable Family

Fiber Optic Build Costs Per Mile - Design Transition Studio

Fiber Optic Build Costs Per Mile January 16, 2026
Costs to run fiber per mile vary widely based on environment, terrain, and network goals. The main drivers are trenching or boring, conduit



Weatherproof Optic Splice Closures for Outdoor

Learn about the significance of waterproof and weathertight optic splice closures. Enhance the reliability of fiber optic networks for FTTH applications.

(PDF) Fiber Optic Splicing Playbook v3.5

The Fiber Optic Splicing Playbook v3.5 provides field technicians and managers with standardized procedures for FTTH builds, PPE readiness, splice enclosure selection, waste management, and



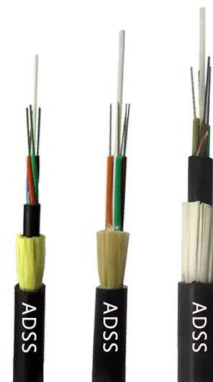


The FOA Reference For Fiber Optics

All closures must be capable of protecting the splices and fibers from water damage. Some aerial or above ground closures are free-breathing while most underground

Fiber Splice Closure Sealing Methods: Pros & Cons Explained

Discover the pros and cons of heat-shrink, mechanical, and gel sealing in fiber splice closures. Learn which method fits FTTx and PON deployments best.



Guide to Fiber Optic Splice Closure: Importance, Types

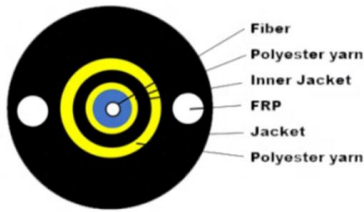
Fiber optic splice closure plays a crucial role in the installation and maintenance of fiber optic networks. In this article, we will explore the various



Fiber Optic Enclosures & Distribution , Splice Closure

Fiber optic enclosures and distribution equipment are essential components in any fiber network infrastructure. These devices protect fiber splices, organize cable connections, and provide



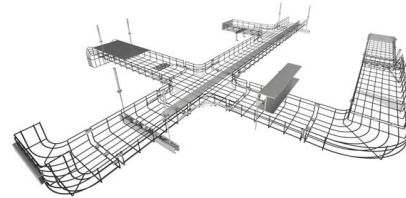


2025 Guide to Fiber Optic Splice Enclosures for Extreme

Bad weather can damage fiber optic networks. Fiber optic splice enclosures protect these networks from harm. They keep connections safe from

IP68 Fiber Splice Closure: The OEM Guide to Waterproofing Standards

Protecting your optical network is not the place to cut corners. Whether you are burying cables in a flood-prone trench or mounting them on utility poles, utilizing a certified IP68 fiber splice



Complete Guide to Fiber Optic Connectors and Splicing

Fiber optic splicing, reliable fiber optic connectors, and proper installation and maintenance practices form the foundation of a resilient fiber network. By selecting the correct fiber

Fiber Optic Closure Basics and Selection Guide

Fiber splice trays used in different fiber optic splice closures may have different designs and fiber counts. The common fiber counts of flat fiber splice closure are



[2026 hot selling] mini optical cable splice box_ip68 waterproof_4/8/12

1688 procurement mini fiber optic splice closure, ip68 waterproof, available in 4/8/12 fiber options. ideal for ftth, low-voltage wells, home and office wiring. wholesale prices available for



The FOA Reference For Fiber Optics

After fiber optic cables are installed, spliced and terminated, they must be tested. For every fiber optic cable plant, you need to test for continuity and polarity, end-to



How to Seal and Waterproof Direct Buried Optical Fiber

The water ingress and sealing treatment of the fiber cable splice closure, which is called fiber optic enclosure, used in underground optical cables



weunion Fiber Splice Machine AI-9 , Advanced AI

Fiber Splice Machine AI-9 Feature: Adopting the latest core alignment technology, equipped with autofocus and six motors, ensuring the accuracy and stability of



Contact Us

For datasheets, pricing, or custom telecom energy solutions, please visit:
<https://www.koskolong.co.za>