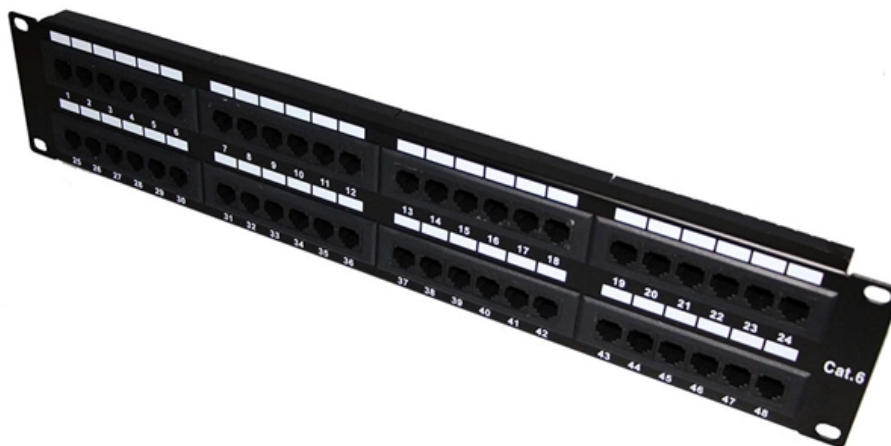




Adam Tas Corridor Energy

Double-layer mesh cable tray diagram





Double-layer mesh cable tray diagram



WIRE MESH TRAY TECHNICAL GUIDE

simple comparison of the measurements for the different cable tray configurations (wire mesh and perforated tray, with and without cover) makes it possible to quantify the role played by the tray in

Cable tray manual

Nearly every aspect of cable tray design and installation has been explored for the use of the reader. If a topic has not been covered sufficiently to answer a specific question or if additional information is



Wire Mesh Cable Tray , Legrand

Wire Mesh Cable Tray Engineered for optimal airflow, this adaptable system minimizes heat buildup to maximize cable loads. The open

Mesh cable tray systems

Mesh cable tray systems Mounting instructions ©
2020 OBO Bettermann Holding GmbH & Co. KG
Reprinting, even of extracts, as well as

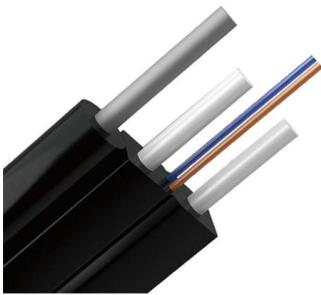


photographic or electronic reproduction are prohibited! Table



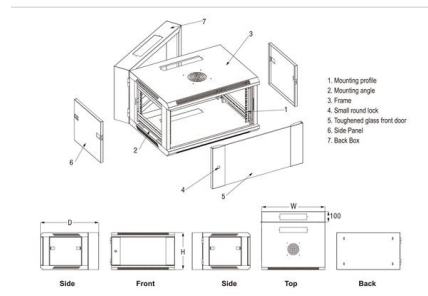
Complete cable tray manual for electrical engineers and

Cable trays simplify the wiring system design process and reduces the number of details. Cable tray wiring systems are well suited for computer aided design



INSTALLATION GUIDE

We have more than a decade's worth of experience making and designing quality cable tray and cable management systems. Our knowledgeable production team works closely with each customer to



Best practice guide to cable ladder and cable tray

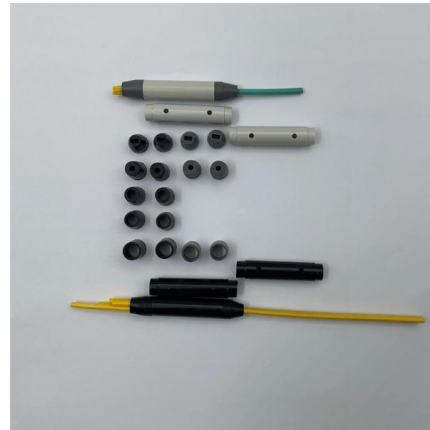
Cable ladder and cable tray systems The following recommendations are intended to be a practical guide to ensure the safe and proper installation of





GUIDE CABLE TRAYS TECHNICAL

When fitting cable trays and their accessories, the products are cut on site to create changes of direction, adjust sections, etc. Damage can also occur during handling; as a result, both the



Basket Cable Tray

View Wire Mesh Cable Tray Projects Here Zinc plating wire basket cable tray used for IDC room. Multiple layer installation. Wire cable tray installed side-by-side with strut channel using as ceiling

Guide to cable support systems

The load capacity of the cable trays according to the support width can be read off in the diagram using load curves - here, shown as an example for a cable tray with the tray widths 100 to 600 mm.



CABLE TRAY SYSTEMS GUIDE

The total load supported by the cable tray, uniformly distributed. This will be the combined weight of all of the cables or tray contents, any environmental loads (snow, ice, dust) and any concentrated static



Wire Mesh Cable Tray Construction Details

This document provides construction details for a wire mesh cable tray, including dimensions and material specifications. An elevation view and plan view show the



Cable tray manual

All the technical information developed by the 1973 NEC® Technical Subcommittee on Cable Tray for Article 318 - Cable Trays was based on cable trays with side rails and this technical information is still

Cable Tray Installation CAD Blocks , DWG Electrical

Download a comprehensive set of Cable Tray Installation CAD Blocks in DWG format, ideal for electrical engineers, MEP designers, and industrial layout





Mesh cable trays

The mesh cable trays can be installed on walls, ceilings or roofs - either directly or by using a profile rail. They are equally suitable for routing cables in raised floors.



Best Practice Guide to Cable Ladder and Cable Tray Systems

This guide covers cable ladder systems, cable tray systems, channel support systems and associated supports intended for the support and accommodation of cables and possibly other electrical



Cable Tray Size and Dimensions: How to Choose the

Learn how to calculate the perfect cable tray size and dimensions for your electrical project. This guide covers load capacity, fill ratios, and industry

Cable Tray Installation CAD Blocks , DWG Electrical

Download a comprehensive set of Cable Tray Installation CAD Blocks in DWG format, ideal for electrical engineers, MEP designers, and industrial layout planners.



Cable Tray Technical Guide A practical guide to product selection and

Cable tray is considered to be a system. It must provide continuous support for cables, and the electrical continuity of the cable tray system must be maintained.

Designing the Perfect Wire Mesh Cable Tray System for Your Network

Are you tired of dealing with cable management issues in your network infrastructure? Look no further! Designed to provide optimal support, flexibility, and ventilation for your cables, wire mesh cable trays



Types of Cable Trays - Advantages, Applications and Sizes

Explore the types of cable trays, their advantages, applications, and standard sizes. Learn how they improve cable management and support various industries.



Mesh cable tray systems

4.1 Product description OBO mesh cable tray systems stand out through their high load capacity and good ventilation. They can be used universally. The mesh cable trays are suitable for the installation



Wire Mesh Cable Tray Make Upgrades and

Wire Mesh Cable Tray - Lightweight, Easy to Install Wire mesh cable tray is a highly efficient, flexible, and structurally stable cable management system. It adopts an

Cable Pathways: A Data Center Design Guide and Best

Cable Pathways: A Data Center Design Guide and Best Practices Cables may not be the most glamorous part of the data center, but they certainly



Cable Tray Raceway Fill and Load Calculations

Wire Mesh Cable Tray Fill Ratio = Cross section of cable / Cross section of tray According to NEC 392.9 (B), when using ventilated tray with multi conductor



Contact Us

For datasheets, pricing, or custom telecom energy solutions, please visit:
<https://www.koskolong.co.za>