



**Adam Tas Corridor Energy**

# **Double-sheathed optical cable cabling**





## Double-sheathed optical cable cabling

---



### The Ultimate Guide to Double-Shielded Coaxial Cables

Conclusion Double-shielded coaxial cables are the ultimate choice for high-performance networking, providing enhanced protection and reliability against electrical interference. By

### Outdoor Steel Armored Double Sheath Multi-Tube Fiber

It performs excellent water resistance and moisture resistance especially in the direct buried application or conduit cabling. Open more information (click on the "+" sign



### OMC Professional Double Sheathed Cable , Outdoor

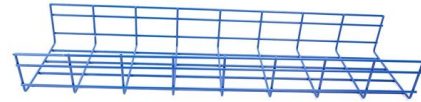
OMC double sheathed cable is the ideal choice for outdoor FTTH drop cable, offering corrosion, waterproof, and abrasion resistance for reliable, long-lasting performance.

### Double Sheathed, Steel Wire Armored Fiber Optic Cable

Double Sheathed, Steel Wire Armored Fiber Optic Cable. This type of optical cable is aimed to be



used for voice, data, broadband and CATV transmission in Long Distance and Backbone Networks with



### **24 Cores GYTA53 Fiber Optic Cable Direct Buried**

24 Cores GYTA53 fiber optic cable Double Armored & Double PE Sheathed is the steel tape armored outdoor fiber optic cable and gel-filled PBT



### **DISTRIBUTION TIGHT BUFFER DOUBLE SHEATH ARMoured FIBRE OPTIC CABLE**

This cable is engineered for high-performance outdoor distribution and is built to withstand tough environmental conditions. Its 900 m tight buffer construction simplifies fibre termination, allowing for



### **Dual Jacket FTTx OS2 Fibre Patch Leads LC/APC-SC/APC**

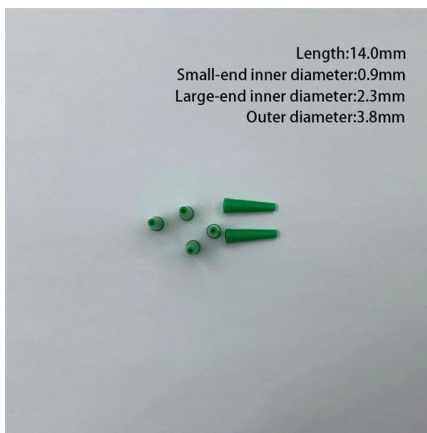
Discover Dual Jacket FTTx OS2 Fibre Patch Leads LC/APC-SC/APC from Netceed UK. Available in a variety of lengths.





## OPTICAL FIBER CABLE

The cable is finally sheathed or jacketed as per the customer specification. The sheathing is usually of black HDPE in case of Direct/Duct buried cable and also be of Nylon PA-12 in specific cases.



## Fibre Optic Cable

View Eland Cables' range of singlemode and multimode fibre optic cables - loose tube and tight buffered. Technical support, fast quote, international logistics and

## What Is a Double Sheathed Cable?

One essential product that meets these needs is the double sheathed cable. It's designed with two layers of protective sheathing that offer greater mechanical strength, electrical insulation,



## Double Sheathed, Single Armored Fiber Optic Cable

This type of optical cable is aimed to be used for voice, data, broadband and CATV transmission in Long Distance, Backbone, Local Area and Metro Networks with



## SC/APC

Commonly used widely in applications such as FTTx, gigabit passive optical network (GPON) and wavelength-division multiplexing (WDM), Connectix OS2



## Central loose tube, fire-resistant, double sheathed cable, CST

The cable features a two jacket construction with up to 24 fibers maximum and is suitable for indoor or outdoor duct or direct buried installation.



## Why Is Double Sheathed Cable More Durable Than Standard Fiber

With additional reinforcement elements, double sheathed cable offers higher tensile and compression resistance than standard cables. This makes it especially suitable for duct, direct burial,





## Double Armored and Double Sheathed Stranded Outdoor Optical Cable

Double Armored and Double Sheathed Stranded Outdoor Optical Cable GYTA53 The fibers, are positioned in a loose tube made of a high modulus plastic. The tubes are filled with a water-resistant

### Shenzhen Chinaopticcable Co.,Ltd

The cable has a very high compressive strength & the armoring provides protection against rodents and other types of likely mechanical damage. Available in a variety of designs such as non metallic steel



## SWA LSZH , Metallic Armoured Multi-Tube Fiber Optic

SWA multi-tube cable with Metallic armour and double LSZH thermoplastic jacket, for indoor/outdoor, rodent protection, and direct burial.

## Why Is Double Sheathed Cable More Durable Than Standard Fiber Optic Cable?

Discover why double sheathed cable offers superior durability, strength, and long-term performance for FTTH and outdoor fiber optic networks.



### **Direct Buried Type Double Sheathed Fiber Optic Cables**

Direct Buried Type Double Sheathed Fiber Optic Cables Loose tube designed. Installed direct buried and/or duct type installation for highly reliable industrial



### **Double Armoured and Double Sheathed Outdoor Optical Cable GYTA53**

3& period; The optical cable has excellent mechanical properties and environmental performances due to reasonable design and precision control of the redundant length and the cabling method of the



### **SWA LSZH , Metallic Armoured Multi-Tube Fiber Optic**

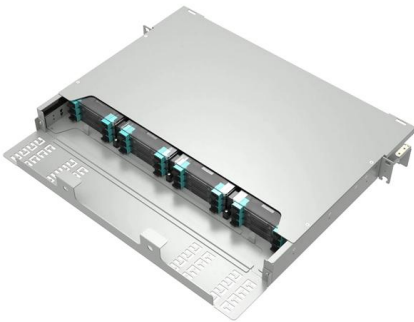
Gel filled multi loose tube cable with metallic armour of steel wires crown and double jacket for indoor / outdoor installation. The metallic armour provides an effective





## Indoor Tight Buffered Distribution, LSZH Sheathed (2

Extra Low Voltage Cables Indoor Tight Buffered Distribution, LSZH Sheathed (2 ~ 24 Fibres)  
Optical Fibre Cable Application This cable is primarily used indoor and

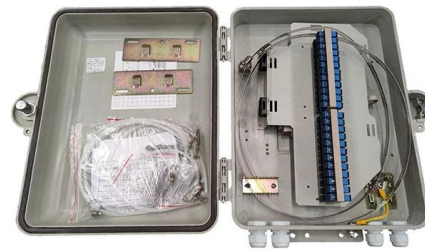


## Optical Cables , Prysmian

Optical Cables Get Sm@rt. Our fibre cable range covers the whole chart. Our optical fibre cable range covers the whole chart. Our complete selection of single-mode,

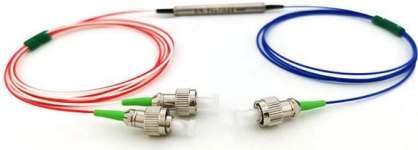
## The Nuts and Bolts of Low Smoke Zero Halogen Cabling

In 2015, the IEC developed the LSHF 62821-1, -2 and -3 standard series, Electric Cables--Halogen Free, Low Smoke, Thermoplastic-Insulated and Sheathed Cables of Rated Voltages up to and



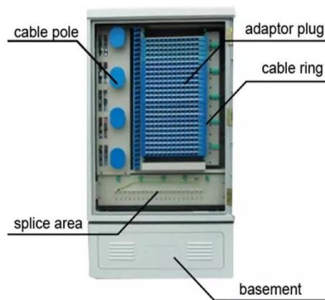
## Fiber Optic Patch Cables, Single Mode, OS2, Duplex

[ Home > Single Mode Patch Cables > Single Mode, Duplex, 9/125 (OS2) ]



### 72 Core Fiber Optic Cable GYTY53 Outdoor Armored

72 Core Fiber Optic Cable GYTY53 Outdoor Armored Double Jacket Waterproof Gel Filled loose tube direct burial is used for direct buried underground, it suit for long



### MULTI-TUBE DOUBLE SHEATH UNARMoured FIBRE OPTIC CABLE

MULTI-TUBE DOUBLE SHEATH UNARMoured FIBRE OPTIC CABLE The cable is constructed with FRP Central Strength Member and PBT Loose tube with jelly filled compound. Non metal strength

### 1910.305

Metal raceways, cable trays, cable armor, cable sheath, enclosures, frames, fittings, and other metal noncurrent-carrying parts that are to serve as grounding conductors, with or without the use of





## Contact Us

---

For datasheets, pricing, or custom telecom energy solutions, please visit:  
<https://www.koskolong.co.za>