



Adam Tas Corridor Energy

Dutch-certified wall-mounted patch panel with 6 cores





Dutch-certified wall-mounted patch panel with 6 cores

Amazon : Wall Mount Patch Panel

Patchpaneel Cat 7, 1U 12 poorten, 10 inch Keystone Patchpaneel, LSA-verdelerveld, RJ45 afgeschermd Keystone Koppeler, compatibel met Cat 7/6A/6/5e en Cat5 netwerkkabels, voor



Wall-Mounted Fiber Patch Panel , High-Density Fiber Optic Solutions

A wall-mounted optical fiber patch panel is a compact, organized solution for managing and distributing fiber optic connections. Typically constructed from durable materials, it features



MPO-MPO Low Smoke Halogen Free Sheath

Multimode 10 Gigabit 24 pole OM3

Insertion loss <0.35dB Return loss >50dB

Buy patch panels in various configurations

At our online shop, you will find a comprehensive selection of premium-quality patch panels, available in standard 10U and 19U formats with various port configurations.

Wall-Mount Panel

Belden offers clean, simple, and lightweight Wall-Mount Panels within its DCX, FiberExpress (FX) UHD and ECX ecosystems. The versatile DCX



CAT6 UTP Wallmount Patchpaneel

Een patchpaneel bestaat uit meerdere poorten die voorzien zijn van een nummer



6 Cores Wall Mounted Socket Panel

The 6 Cores Socket Panel optimizes data flow by allowing multiple connections, minimizing signal loss, and supporting high-speed data transmission. This efficiency makes it a suitable choice for fiber optic



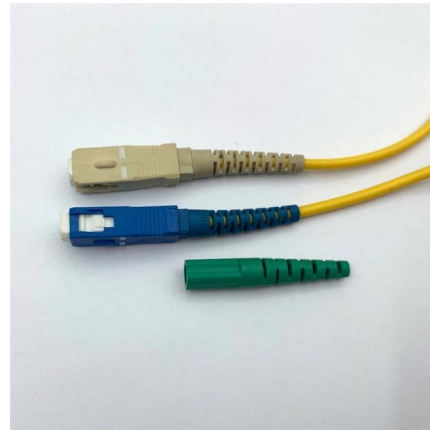
Rackmount or Wallmount 24-Port Cat6A Shielded RJ45

Cable Matters 24-Port Shielded Cat 6A Patch Panel can be mounted in a 19" rack. It supports Category 6A performance in compliance with the ANSI/TIA/EIA 568-C.2



Patch Panels , Leviton Network Solutions

Leviton offers the industry's largest selection of high-quality copper and fiber optic patch panels to support the latest technologies and provide ideal configurations

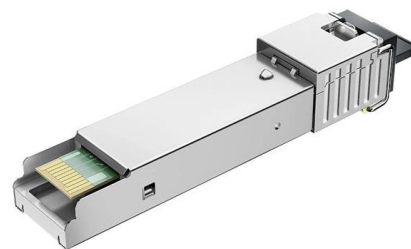


TRENDnet 24-Port Cat6 Unshielded Patch Panel,

These patch panels are certified for 250Mhz Category 6, which are perfect for Copper Gigabit Ethernet connections. TRENDnet's 24-port Cat. 6 Patch Panels

[UL Listed] Rackmount or Wallmount 24-Port Cat6 RJ45

Effortless Installation in Universal Racks: This 1U patch panel fits easily into 19" racks, cabinets, or wall-mount brackets, offering a 1U (1.75") standard height for



Best Patch Panels for Cat6 , Firefold

Shop for the latest patch panels for cat6 with 12, 16, 24, 48 to 96 ports. Top brands - ICC, Quest, Tripp Lite, Vertical Cable. Easy Installation.



Wall Mounted 2 Cores Patch Panel

Wall Mounted 2 Cores Patch Panel SS-2Cores-122
2 cores fiber patch panel can hold up to 1
subscriber. It is used as a termination point for
the drop cable to



High-quality, high-performance data- comm products that

12 Port CAT6 Wall Mount Patch Panel - 1U NP-
C612ST-W CAT6 Patch Panels from Networx®
will maximize your network performance and will
keep up with even the

Legrand AV , On-Q WP246A Cat6a 24-Port Rack Mount Patch Panel

Uncover On-Q WP246A 24-port Cat6a patch
panel with clear numbering and robust
terminations as digital media demands grow.
Explore more.





CAT6A Network Patch Panels

What is a patch panel? Patch Panels CAT6a are designed to accommodate high speed, high density applications where networking space is at premium quality.

Copper Patch Panels

\$10.40 Allen Tel AT55HM-3 Patch Panel Hinged Wall Mount Bracket, 2 RU \$67.05 Allen Tel AT55HM-7 Patch Panel Hinged Wall Mount Bracket, 4 RU \$91.95 Allen



Rack Mounted & Wall Mounted Fiber Patch Panel SC

Fiber Optic Patch Panels also called fiber optic termination box, can be categorized into Pre-Loaded Fiber Optic Patch Panels and Unloaded patch panels, Most of

Spec Sheet

DIN Rail Mounted Patch Panels Regional Availability -- Global DIN Rail Mounted Patch Panels provide an effective solution for industrial networks inside control panels and distribution cabinets where DIN



Types of RJ45 Patch Panels: How to Select the Suitable

This article is an Ethernet patch panel buying guide giving a description of the common RJ45 to RJ45 patch panels based on different factors:



directory-list-2.4.txt/directory-list-2.4.txt at main

bestutsengineer / directory-list-2.4.txt Public Notifications You must be signed in to change notification settings Fork 0 Star 6



Patchpanelen Cat6

Net als bij Cat 5e patchpanelen, hebben Cat6 patchpanelen poorten waar de uiteinden van de Cat6-kabels in worden gestoken. De poorten zijn vaak gecodeerd met verschillende kleuren om





trueCABLE's Shielded Wall-Mounted Patch Panel

Discover trueCABLE's 12-port shielded wall-mounted patch panel. Features, compatibility, and step-by-step install guide for small business and



12-Port Cat6A Shielded Wall Mount Patch Panel

TRENDnet's 12-Port Cat6A Shielded Wall Mount Patch Panel, model TC-P12C6AS, is ideal for gigabit and 10G Copper Ethernet network applications. This patch

Shielded 24-Port CAT 6A Patch Panel - Rack Mount, 1U

Shielded 24-Port CAT 6A Patch Panel is an excellent choice for both home and commercial networks. This patch panel features 24 shielded, flush-mounted RJ45 keystone jacks for high-performance



6 Cores Wall Mounted Socket Panel

Installed this wall-mounted socket panel for my office network, and it's been a game-changer! It connects smoothly with our Alcatel-Lucent fiber equipment, making everything neat and efficient.



Intellinet Cat6 Wall-mount Patch Panel (560269)

This patch panel offers convenient access to ports and can be mounted to a wall,

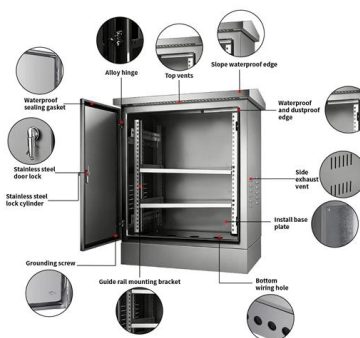


Wallmount patchpanelen kopen? Gemakkelijk online bestellen

Onze muur patchpanelen zijn beschikbaar in Cat5e, Cat6 en Cat6a, en bieden betrouwbare en snelle netwerkverbindingen voor je apparaten. Op zoek naar een voordelige Wallmount patchpanelen?

Patch Panel Manufacturer & Supplier in Netherlands

Blank shielded patch panel from Norden exceeds TIA and ISO component specifications, supporting network convergence protocols, delivering max bandwidth and extended reliability for all LAN,





8-Port Cat6A Shielded Wall Mount Patch Panel

TRENDnet's 8-Port Cat6A Shielded Wall Mount Patch Panel, model TC-P08C6AS, is ideal for gigabit and 10G Copper Ethernet network applications. This patch panel

Contact Us

For datasheets, pricing, or custom telecom energy solutions, please visit:
<https://www.koskolong.co.za>