



Adam Tas Corridor Energy

Edge Computing for Telecom Shelter Outdoor Type





Overview

This design guide walks through a four-layer system architecture — from sensor input to SCADA integration — using IP67-rated and GPU-equipped rugged platforms to build outdoor edge AI systems that survive 10+ years without climate-controlled enclosures. Outdoor edge AI deployments in energy substations, telecom tower cabinets, and oil field wellpads face a hostile trifecta: temperature extremes from -40°C to 70°C , direct rain and dust exposure, and unreliable power from solar or battery sources. Outdoor telecom cabinets are critical enclosures for deploying this distributed computing infrastructure safely and efficiently. 5G base stations, fiber breakout points, satellite terminals, and micro data centre edge cabinet installations all demand outdoor telecom enclosures that can withstand harsh conditions while.



Edge Computing for Telecom Shelter Outdoor Type



Edge Computing and Outdoor Telecom Cabinets: Bringing Data

Explore how outdoor telecom cabinets support edge computing deployments, improve network performance, and reduce latency by housing localized data processing equipment.

Global Telecom Equipment Shelter Containers Market - Size, Share

The global telecom equipment shelter containers market has witnessed significant growth in recent years. These containers provide a secure and protected environment for housing telecom



Telecommunication Shelters

Experience unparalleled protection and reliability with Enviro Buildings® telecom shelters, specially designed for ground site applications in challenging

Protecting outdoor edge computing equipment.

To meet the protection needs of edge computing technology deployed outdoors, Eaton has



developed the ExoCab Outdoor Enclosure range of IP rated cabinets that can be used to protect vital



Outdoor Edge Computing Gateway AIoT-5G-GW06

Home » Outdoor Edge Computing Gateway AIoT-5G-GW06 Outdoor Edge Computing Gateway AIoT-5G-GW06 TruGem's AIoT-5G-GW06 is a powerful

Outdoor Telecom & Edge Data Enclosures: Matching

Learn how to match rugged connector interfaces with weatherproof outdoor enclosures for telecom and edge data centers. Ensure network reliability,



What Is Edge Computing? Types, Benefits & Uses

Learn what edge computing is, how it works, and why it matters. Explore its benefits, real-world use cases, security concerns, and role in modern networks.



Outdoor Edge Systems

San Jose, Calif., March 2, 2020 -- Super Micro Computer, Inc. (Nasdaq: SMCI), a global leader in enterprise computing, storage, networking solutions, and green computing technology, is first-to

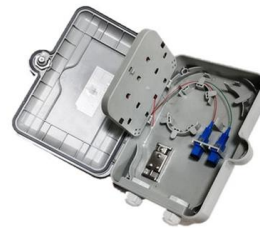


Environment Monitoring System deployment solutions for edge

Outdoor telecom cabinets need rugged enclosures and advanced thermal management to protect edge computing equipment from dust, moisture, and extreme temperatures. Real-time

Communication Shelters

Enviro Buildings® specializes in the design of communication shelters for Ground, Rooftop, Mountain, and even Remote Applications.



What is edge computing?

Edge computing is a distributed computing framework that brings enterprise applications closer to data sources such as IoT devices or local edge



White Paper: Outdoor High Performance Computing

Meet the Wiwynn Outdoor Edge Server (OES): A compact outdoor HPC edge server designed for high-performance, low-latency computing in



Outdoor telecom container shelter

Outdoor telecom container shelters are structures designed to protect telecommunications equipment from external environmental factors. These shelters ensure that sensitive telecom gear is housed in a

Environment Monitoring System deployment solutions for edge computing

Environment Monitoring System solutions safeguard edge computing nodes in outdoor telecom cabinets, ensuring uptime and reliability in harsh conditions.





AgileHub 2.0 - Shelter Modular Data Center Solution



We create Prefabricated Micro Data Center to build foundation of digital future. AgileHub 2.0 - Shelter Modular Data Center Solution Continual Innovation,

Designing High-Performance, Robust Power Supplies For 5G And Outdoor

As with most applications, the PSU must be efficient and compact. However, for 5G and edge computing, it must also be suitable for mounting close to telecom equipment on a pole or wall and



- ✓ Slow Axis Aligned (0°) - for standard sensing applications
- ✓ Fast Axis Aligned (90°) - for special modulation applications
- ✓ 45° Axis Aligned - for depolarizer applications



12 V / 1 kW fan-less PSU for outdoor 5G & edge computing

- Fixed Wireless Access: base stations used to provide wireless broadband connectivity between two fixed points, for example a mobile network cell tower and a FWA device in a customer's home.

Telecommunication Shelters and Enclosures

In this discussion, we will explore the importance of telecom shelters, the different types available, key features to consider, benefits of insulation,



Designing Rugged Edge AI Systems for Outdoor Energy and Telecom

Step-by-step design guide for deploying rugged edge AI outdoors in energy substations and telecom cabinets. Covers IP67 hardware, thermal design, and power architecture.



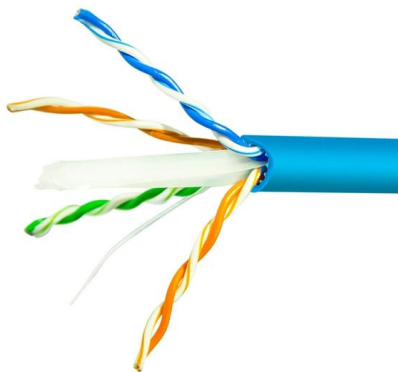
Achieve Peak Performance with Outdoor Enclosures for Network

Discover how Vertiv's extensive range of outdoor enclosures and outside plant solutions can help you get the edge computing power you need for tomorrow's network edge performance.



Secure housing and edge computing with a CANCOM

Secure housing and edge computing with a CANCOM BIG IT-Shelter In edge computing, data or services are usually shifted away from central data





Edge Computing Outdoor Cabinet: Selection and Deployment Guide

When power and connectivity combine on a single outdoor enclosure, outdoor telecom enclosures with modular cable management and power distribution bays minimize deployment time from days to hours.



Outdoor Edge computing equipment Solution , Outdoor Enclosures , AZE

To meet the protection needs of edge computing technology deployed outdoors, AZE has developed the RODF- Outdoor Enclosure range of IP rated cabinets that can be used to protect vital

Outdoor integrated telecom shelter

ZhongXing Tech's Outdoor Integrated Telecom Shelter is a weatherproof, all-in-one solution designed for 5G Base Station Shelter, remote telecom sites, and mission-critical



Emerging Trends in Outdoor Telecom Cabinets

The outdoor telecom enclosure market continues to evolve, driven by advancements in 5G, edge computing, and regional developments. By staying



Telecom Shelters

Used to safeguard sensitive telecommunication equipment from the surrounding environment, telecom shelters are small independent structures that house



Ordering information

NO.	1	2	3	4	5	6
Model	SP2014	SP2012	SP2014	SP2014	SP2012	SP2014
Product name	Patch Panel	Patch Panel	Patch Panel	Patch Panel	Patch Panel	Patch Panel
Illustration						
HU	1	2	4	1	2	4
Maximum number of cores	144	288	576	144	288	576
Product size (including modules and adapters)	452.0*552*46 mm	452.0*552*91 mm	452.0*552*177 mm	452.0*552*46 mm	452.0*552*91 mm	452.0*552*177 mm
Standard color code	RAL9005	RAL9005	RAL9005	RAL9005	RAL9005	RAL9005
Inventory	✓	✓	✓	✓	✓	✓

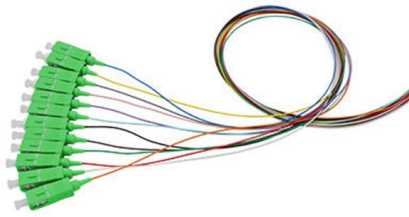
Edge Computing & Telecom (5G/6G) , NOVTRIQ

Small cell sites, micro data centres, and telecom shelters operate in constrained environments--remote sites, urban rooftops, carrier hotels--where thermal management, power redundancy, and remote

What Is Edge Computing? Everything You Need to

Thus, edge computing is reshaping IT and business computing. Take a comprehensive look at what edge computing is, how it works, the influence of the





Achieve Peak Performance with Outdoor Enclosures for Network Edge Computing

Discover how Vertiv's extensive range of outdoor enclosures and outside plant solutions can help you get the edge computing power you need for tomorrow's network edge performance.

Contact Us

For datasheets, pricing, or custom telecom energy solutions, please visit:
<https://www.koskolong.co.za>