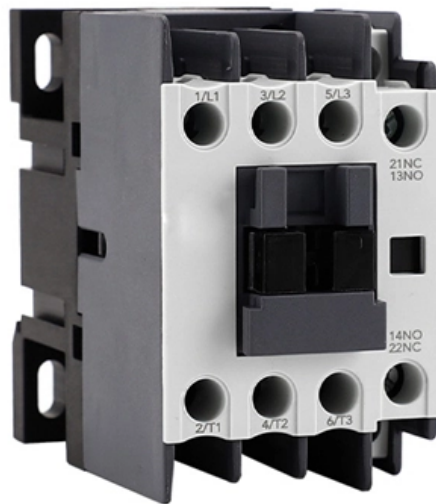




Adam Tas Corridor Energy

Eight-core fiber optic cold connector model



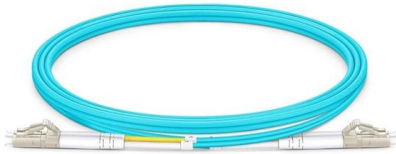


Overview

The MTP®/MPO (Multi-fiber Push-On/Pull-off) connector is the backbone of modern high-speed data centers and telecom networks. Its core advantage lies in terminating multiple optical fibers (8, 12, 16, or 24) within a single, compact ferrule. The number of fibers changes how you set up your network and how much you can grow it later. This article explores the three main MTP/MPO connector types—Base-8, Base-12, and Base-24—highlighting their unique features, benefits, and ideal application scenarios. Imm (main cord) Material Stainless Steel Color Silvery White UL94 V-0 (*Burning stops within 10 seconds on a vertical specimen, no drips of flaming particles. Specifications are correct at time of printing and subject to change or alteration.



Eight-core fiber optic cold connector model



125-mm-Cladding Eight-Core Multi-Core Fiber Realizing Ultra-High

Request PDF , 125-mm-Cladding Eight-Core Multi-Core Fiber Realizing Ultra-High-Density Cable Suitable for O-Band Short-Reach Optical Interconnects , A novel multi-core fiber (MCF),

Guide To Fiber Connector Types

Learn about the most commonly used fiber connector types including FC, LC, ST, and MTP fiber optic connectors for single-mode and multimode



KELUSHI L925BP 5pcs Fiber Optic Butt Joint Optical Cable Cold Connector

About this item "1. Used for optical fiber-to-optical fiber docking 2. Optical fiber-to-optical cable interconnection 3. Fix the two optical fibers in the high precision V-shaped groove 4. The fiber core

Premium-Line Figure 8 Fiber Optic Cable, 9/125um G652D

The fibers, 250µm, are positioned in a loose tube made of a high modulus plastic. The tubes are



filled with a water-resistant filling compound. A steel wire locates in



What is Fiber Cold Splice?

What is Fiber Cold Splice? The fiber quick splicing connector is also called field assembly connector, means only use simple splicing tools not fusion splicer to realize drop cable terminated.

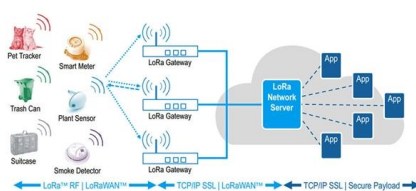
Double-core leather cable, optical fiber cold connector

Indoor double core fiber optic cable? What is a leather cable? Leather cable is commonly known as indoor suspension wiring cable. In the optical fiber access project, the indoor wiring close



8 Core Optical Fiber Cable_Specification

UL94 V-0 (*Burning stops within 10 seconds on a veritcal specimen, no drips of flaming particles.) *Exact product code is subject to the cable length. Specifications are correct at time of printing and subject





Fiber Connector Types Guide: Comparison & Selection

Guide comparing fiber connector types, their features, applications and selection tips for reliable, high-performance fiber optic networks.



Fiber Fast Connector Buying Guide: SC/APC Cold Connector Types

A fiber fast connector, also known as a mechanical splice or cold connector, is a field-installable connector that terminates fiber optic cables without requiring a fusion splicer.

Optical fiber cold connection advantage

Optical communication is now the dominant network transmission method in society, which is nothing more than because it has many advantages



8 Core MPO MTP® to LC Harnesses Cable OM3 OM4 Price

The MPO/MTP® to LC harness cables can be made with 2mm or 3mm ruggedized furcation legs in customized length, this will help make it more rugged.



Comparing 8, 12, 16, and 24 Fiber MPO Connectors

Compare 8, 12, 16, and 24 fiber MPO Connectors to understand differences in fiber count, compatibility, and how each type fits your network's needs.



How to choose the number of fiber cores?

Common fiber cores include 1 core, 2 cores, 6 cores, 8 cores, etc., and there are many types. This article will focus on the number of fiber cores,

Optical fiber cold splicing and hot melting steps

Efforts to reduce the splice loss at the optical fiber joint can increase the optical fiber relay amplification transmission distance and improve the attenuation margin of the optical fiber link.





Fiber Optic Connector Types: A Beginners Guide



The fiber connector types, sometimes referred to as terminations, link fiber optic cables together through terminals, switches, adapters, and patch

Comparing MTP/MPO-8, MTP/MPO-12, and MTP/MPO-24 Fiber

Explore the key differences between MTP/MPO-8, MTP/MPO-12, and MTP/MPO-24 fiber connectors. Find out which connector best suits your network needs for optimal performance and efficiency in



MTP Connectors , MPO Connector Advantages , Corning

The latest versions of MTP connectors are designed to work not only with true fiber-to-fiber connections, but with a host of other technology and electronics across all

Understanding SC/APC Fiber Optic Connectors: A

Discover everything you need to know about SC/APC fiber optic connectors in our comprehensive guide. Learn about their applications, benefits,



Fiber Connector Types: A Complete Guide (2024)

What is a Fiber Connector? The fiber connector is called a fiber optic or optical fiber connector. It is a precise coupling device that joins fiber optic



MPO Connectors Explained: Fiber Counts, Polarity

If you only remember one thing: MPO is a multi-fiber connector standardized under IEC 61754-7 that allows you to terminate 8, 12, 16, 24, or



Optical Transceiver Manufacturer, 12 Core Vs 8 Core

Choosing between 12-core and 8-core MPO connections for 40G network cabling? This guide compares fiber utilization, insertion

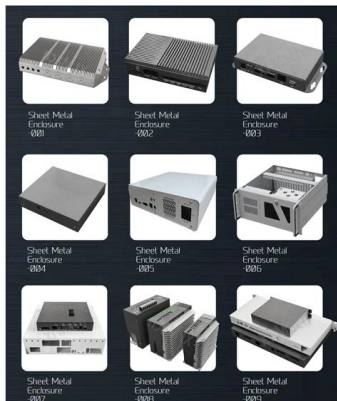


loss,density,and



fiber optic cold connection

Fiber optic cold connection, also known as mechanical splicing, is a widely used method of connecting optical fibers in a network. Unlike fusion splicing, which uses heat to join two optical fibers



Fiber Connector Types: A Comprehensive Guide 2025

A fiber optic connector is a mechanical device used to align and join optical fibers, enabling light to pass through with minimal loss. Unlike fiber

Multi-fiber Push On (MPO) Connectors

Multi-fiber push on connectors, or MPOs, are fiber cable connectors comprised of multiple optical fibers. Learn more at Fluke Networks.





Optical fiber fast connector/cold connection skills

Optical fiber fast connectors, also known as cold connectors, are becoming increasingly popular due to their ease of use and quick installation. Unlike traditional fiber connectors that require epoxy and

A Guide Based on Core Numbers to Choose The Right MTP/MPO Cable

Through an 8-core MTP to LC harness cable, the MTP connector is connected to the 40G port end, and the four LC connectors on the other end are connected to the 10G interfaces, realizing



MPO-8 / MPO-12 / MPO-16: Differences and Application

When working with equipment that requires 8 fibers, customers can use MTP-8 / MPO-8 to directly connect the fibers to avoid waste. If a 12-fiber

Contact Us

For datasheets, pricing, or custom telecom energy solutions, please visit:
<https://www.koskolong.co.za>