



Adam Tas Corridor Energy

Electrical boxes distribution boxes switch boxes





Electrical boxes distribution boxes switch boxes

Different types of electrical boxes - Expert in Electrical



Electrical boxes serve as protective enclosures for wire connections, switches, and outlets. In this guide, we will explore different types of electrical boxes, their uses,

Distribution Boxes, Switch Outlets and Accessories

The range includes windproof cavity wall switch boxes and junction boxes with membranes for energy-efficient electrical installation. This facilitates energy



The Ultimate Guide to Distribution Box Types

Discover the key types of distribution boxes with NUOMAK's comprehensive guide. Learn about Main Distribution Boards (MDB), Consumer Units, Transfer

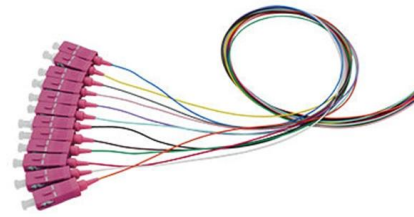


Distribution Box vs Control Box vs Junction Box: Key

Learn the differences between distribution boxes, control boxes, and junction boxes.



Discover their functions, applications, and how E-abel provides



HT Electrical Junction Box IP65 Waterproof Outdoor

HT Electrical Junction Box IP65 Waterproof Outdoor Distribution Box Transparent Cover Switch Wiring Boxes

Complete Guide For Distribution Boxes Types

Distribution boxes, also known as electrical distribution boards or panels, are pivotal components in electrical systems, ensuring the safe and organized distribution of



What is the difference between a distribution box and a switch box

In this article, we will explain what a distribution box and a switchgear box are, when to use which one, what their uses are and what safety regulations apply.



Distribution Boxes, Switch Outlets and Accessories

Distribution Boxes, Switch Outlets and Accessories Our products range includes simple flush-mounted switch boxes to surface-mounted boxes for indoor use, as



What Is an Electrical Distribution Box? A Complete Guide

An electrical distribution box is a centralized unit responsible for distributing electrical power across multiple circuits within various

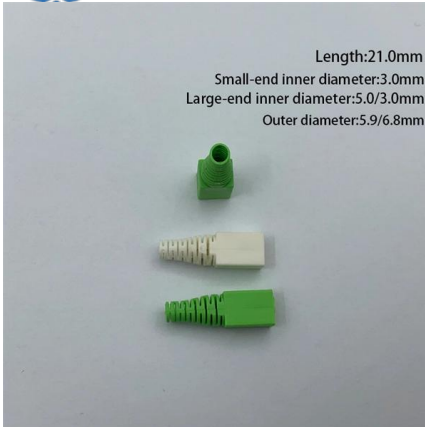
Distribution Box Guide: Types, Components & Solutions

Understand distribution boxes (DB boxes) in 5 minutes. Learn about types, components, functions, and uses. Find the perfect DB box for your needs.



Understanding Distribution Boxes: A Comprehensive Guide

A distribution box is a vital piece of equipment that ensures the effective and safe distribution of electrical power in various parts within a building



Power Distribution Boxes Explained Simply

Discover the essentials of a Power Distribution Box--how it works, key types, benefits, and tips to ensure safe, efficient electrical power management.

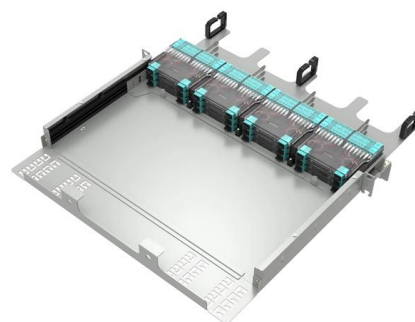


What is an Electrical Distribution Box? A

Components Inside an Electrical Distribution Box
Opening up an electrical distribution box might look like stepping into a maze of wires, switches,

DB BOX(Electrical Distribution Box): Everything You

Learn everything you need to know about the Electrical Distribution Box (DB Box). Explore types, materials, installation tips, etc.



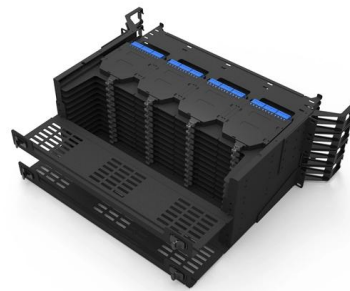


The Complete Guide to Distribution Box: Installation, Types & More

The main switch, or main breaker, controls the entire electrical supply to the distribution box. This large switch allows you to disconnect all power to the building during emergencies or

What is the difference between a distribution box and a switch box

The proper use of distribution and switchgear cabinets The difference between a distribution box and a switchboard revolves around their respective functions and applications. A

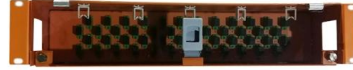


Complete Guide For Distribution Boxes Types

What Are Distribution Boxes? Distribution boxes, also known as junction boxes, electrical boxes, or panelboards, are essential components in electrical

Amazon

About this item . THQL Circuit Breaker Box, 4-Space, 125A Circuit Breaker Panels, Indoor Main Lug Load Center, No UL Approval ; NEMA 1 STEEL ENCLOSURE--Constructed of high-qualit



Explore Power Distribution Box Types and Functions

Power distribution boxes are used in commercial and residential buildings and are part of the electrical system, also known as switchboards.

What Is an Electrical Distribution Box? A

An electrical distribution box is a centralized unit responsible for distributing electrical power across multiple circuits within various



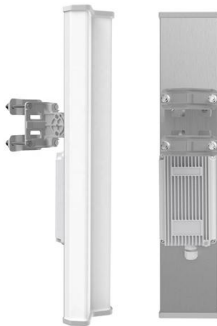
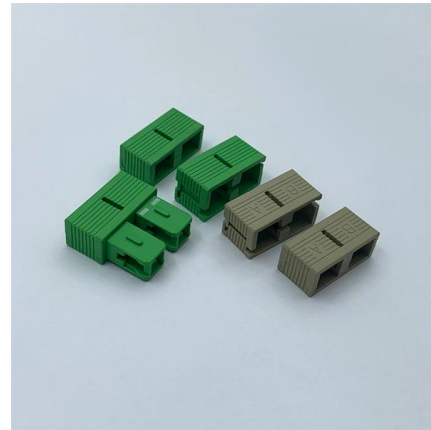
Understanding Electrical Boxes: Types, Uses, And

Electrical boxes, also known as junction boxes, outlet boxes, or switch boxes, are enclosures used to house electrical connections and protect them from external



Power Distribution Boxes Explained Simply

Learn what a power distribution box is, how it works, key components, types, and why it's vital for safe and efficient electrical systems.



12 types of distribution boxes and how to choose them

In this guide, we'll break down the 12 main types of distribution boxes in a way that's easy to understand. We'll chat about what each one does, where it shines, and then dive into how to choose the perfect

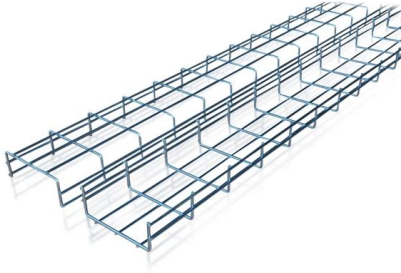
Understanding Distribution Boxes: A Comprehensive Guide

Learn what a distribution box is, its types, and how to choose the right one for your project. Includes clear examples and expert tips.



12 types of distribution boxes and how to choose them

Key Factors in Choosing a Distribution Box
Building Type and Size: Start with where it's going. For homes, a residential or flush-mounted box might suffice, but large spaces need sub-distribution



Contact Us

For datasheets, pricing, or custom telecom energy solutions, please visit:
<https://www.koskolong.co.za>