



**Adam Tas Corridor Energy**

# **Enable ICMP on Cisco industrial switches**





## Enable ICMP on Cisco industrial switches

---



### Configure IGMP Snooping Settings on a Switch through

This article provides instructions on how to configure the IGMP settings on your switch, through the Command Line Interface (CLI)

### Enable Ping (icmp) on Cisco router sr520.

Hi! I would like to enable ping on a cisco router from time to time for test purpose. I know that by default cisco router come icmp disabled for security purpose. Is there a way to enable this



### Allow ICMP Traffic through ASA

While doing troubleshooting the first requirement is to allow traffic from internal source to external and vice versa to verify the connectivity. List are the

### How to allow ICMP on my router

You can achieve this using conditional NAT statement for any TCP/UDP traffic redirect to that host and for icmp it should go to any router



interface. Please let me know if you need assistance



## Configuring IGMP under an Ethernet Interface

This section contains payload examples and CLIs to demonstrate how to use the NX-API REST API to configure IGMP on Cisco Nexus 3000 and 9000 Series switches and to show how the REST APIs



## Consolidated Platform Configuration Guide, Cisco IOS Release

Consolidated Platform Configuration Guide, Cisco IOS Release 15.2 (7)Ex (Catalyst 3560-CX and 2960-CX Switches)



## Configuring IGMP Snooping

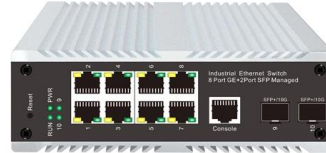
By examining (snooping), Internet Group Management Protocol (IGMP) membership report messages from interested hosts, multicast traffic is





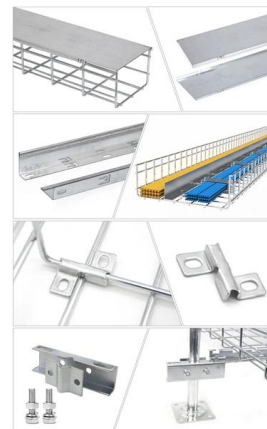
## IP Multicast Routing Configuration Guide, Cisco IOS XE

You can configure an IGMP snooping querier to support IGMP snooping in subnets without multicast interfaces because the multicast traffic



## Industrial Ethernet Switches

Modernize your operations with Cisco Industrial Ethernet switches: Increase productivity, boost security, and empower industrial AI.



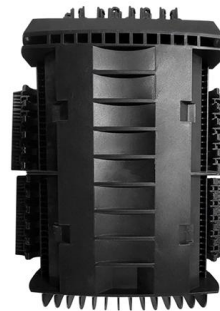
## IP Multicast Routing Configuration Guide, Cisco IOS XE Everest

IP Multicast Routing Configuration Guide, Cisco IOS XE Everest 16.5.1a (Catalyst 9300 Switches)



## Common Industrial Protocol (CIP)

Information About Configuring CIP The Common Industrial Protocol (CIP) is an industrial protocol for industrial automation applications. It is supported by Open DeviceNet Vendors Association (ODVA),



Rear of the optical fiber distribution box



## ICMP Access

ICMP rules function like access rules, where the rules are ordered, and the first rule that matches a packet defines the action. If you configure any ICMP rule for an interface, an implicit deny ICMP rule

## IP Multicast Routing Configuration Guide, Cisco IOS XE

IP Multicast Routing Configuration Guide, Cisco IOS XE Everest 16.6.x (Catalyst 9300 Switches)  
-Configuring IGMP



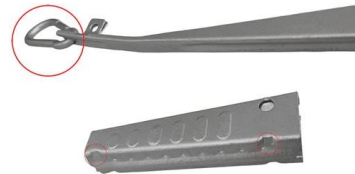


## Cisco IGMP Configuration Example ? IpCisco

In this IGMP Cisco Configuration Example, we will configure Cisco Catalyst Switch for IGMP (Internet Group Management Protocol). As you know IGMP is used to

## Configure Internet Group Management Protocol (IGMP) or Multicast

Article ID:5313 Configure Internet Group Management Protocol (IGMP) or Multicast Listener Discovery (MLD) Snooping on a Switch Objective Multicast is the network layer technique



### 5-INCH COLOR TOUCHSCREEN

Intuitive operation, easily accessible with just one touch



## Configuring SPAN On Cisco Catalyst Switches

Cisco Catalyst 3550, 3560 and 3750 switches can support up to two SPAN sessions at a time and can monitor source ports as well as VLANs The

## Cisco 3750 Switch does not allow ICMP traffic

Dear All, I am junior network administrator and pretty new in cisco networking world. I'm not quite sure why my Cisco 3750 switch do not pass the ICMP/traceroute traffic. I have ASA Firewall



### **Cisco Industrial Ethernet 1000 Series Switches Data Sheet**

The Cisco® Industrial Ethernet (IE) 1000 Series Switches are compact rugged switches aimed to operational technology (OT) users with limited IT



### **Configuring IGMP**

Configure an IP address on the VLAN interface. When enabled, the IGMP snooping querier uses the IP address as the query source address. If there is no IP address configured on the VLAN interface, the



### **How to Enable Telnet/ICMP on Cisco 2960 POE Switch**

Find answers to How to Enable Telnet/ICMP on Cisco 2960 POE Switch from the expert community at Experts Exchange





## IP Addressing Configuration Guide, Cisco IOS XE 17.x

This module describes how to configure an IP Service Level Agreements (SLAs) Internet Control Message Protocol (ICMP) Echo operation to monitor end-to-end



## Troubleshoot IGMP Snooping on Switches

This document describes how the Internet Group Management Protocol (IGMP) feature on Catalyst 9K series switches works with debugs.

## Configure Internet Group Management Protocol (IGMP) or Multicast

When IGMP is enabled, it detects the IGMP messages exchanged between the IPv4 router and the multicast hosts attached to the interfaces. It then maintains a table that restricts IPv4



## Cisco Industrial Ethernet 4000, 4010 and 5000 Switch Software

Restrictions for Configuring CIP CIP can be enabled on only one VLAN on the switch.  
Information About Configuring CIP The Common Industrial Protocol (CIP) is an industrial protocol for



## Multicast

IGMP Version 1 IGMP version 1 (IGMPv1) primarily uses a query-response model that enables the multicast router and multilayer switch to find which multicast



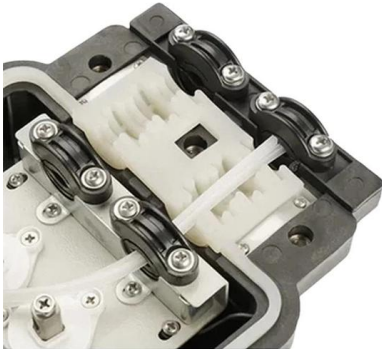
## Configuring IGMP

However, you can statically configure multicast groups by using the `ip igmp snooping vlan vlan-id static ip_address interface interface-id global` configuration command.

## Cisco Nexus 7000 Series NX-OS IP SLAs Configuration Guide 8.x

Configuring IP SLAs ICMP Echo Operations This module describes how to configure an IP Service Level Agreements (SLAs) Internet Control Message Protocol (ICMP) Echo operation to





## **Configure IGMP Snooping Settings on a Switch through**

Configure Global IGMP Snooping Step 1. Log in to the switch console. The default username and password is cisco/cisco. If you have

## **Contact Us**

---

For datasheets, pricing, or custom telecom energy solutions, please visit:  
<https://www.koskolong.co.za>