



Adam Tas Corridor Energy

Estonian Smart City Intelligent Patch Panel Resistant to Low Temperatures





Overview

The main idea of Tartu's lighthouse project was to turn khrushchyovkas (a type of panel buildings that were constructed during the reign of Nikita Khrushchev starting from the 1950s) into smartovkas (i.

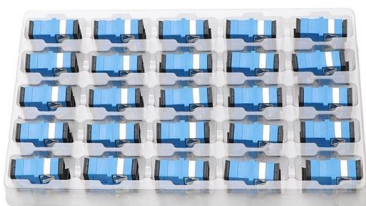


Estonian Smart City Intelligent Patch Panel Resistant to Low Temperature



SmartPatch(TM) Copper Snap-In-Jack Pane

APPLICATION SmartPatch Intelligent Patch Panels enable the monitoring and recording of patching status for copper networks. Intelligent panels communicate with and receive power from the

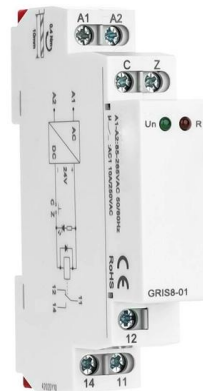


Tallinn: smart city

We're currently looking at intelligent housing that could regulate its own temperature (through heating or air-conditioning) whenever necessary,

Intelligent Patch Panel < Product

LS SimpleWin(TM) Intelligent Infrastructure Management System drastically speeds up and simplifies site planning and daily network provisioning, maintenance and security. It also provides comprehensive



RFID Patch Panel RevC 9-6-11 dd

INTELLIGENT PATCH PANEL Intelligent Patch Panels STRAN Technologies' RFID-ready connectors and patch panels offer a cost-effective solution to real-time mapping and self-organizing



and could even plan



Intelligent Patch Panel (IPP)

PRODUCT DESCRIPTION The MantisNet Intelligent Patch Panel (IPP) is a modular switching users to connect any port to any other port within the IPP system. Designed around a distributed architecture,



Intelligent Patching (IP)

Intelligent patching and real-time monitoring with FUTURE-PATCH for patch panels in large networks Automated management and administration of network



Tallinn: smart city

TOP PLAYER Tallinn, an example of smart city technology use You wouldn't instinctively guess that Estonia would top the list of countries home to the world's





Tartu's apartment building gets a test touch-up thanks to

As part of an oPEN Lab project, three buildings in Tartu's Annelinn neighbourhood will have prefabricated facade panels installed on the wall,

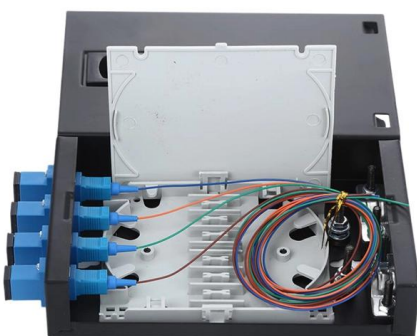
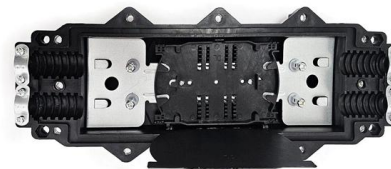


A city is automating homes to reduce energy consumption

The city of Tartu installed automated systems in old housing blocks. Using nudges, sensors, and automated decision-making, it hopes to reduce energy consumption by two-thirds. SmartEnCity is a

Infinique Intelligent Patch Panel Cat.6A Shielded

The system includes smart sensing Patch Panels which are connect to a Network Scanner that is centrally managed by application software. The 10G+ Cat.6A STP 24 Port Patch Panel delivers



What is a smart city? The Estonian vision for new models of smart city

Estonia is testing smart city solutions on large scales, from making old blocks of flats smart to developing a joint project with Helsinki.

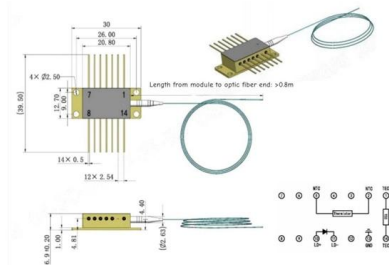


Nearly Zero Energy Buildings Research Group , TalTech

Within its short life time, nZEB Research Group has contributed to the development of Estonian energy performance calculation framework and methodology, to the



Outline drawings
mm



LIFE 3.0

The project team will demonstrate technical solutions and pilot renovations in 25 buildings, with the pilot renovations in the cities of Tartu (for multi-storey apartment buildings and detached

FinEst Centre for Smart Cities , Tallinn University of

The permanent Smart City Planning HUB in downtown Tallinn will promote the digital advance of the city and facilitate citizen participation in urban planning. The



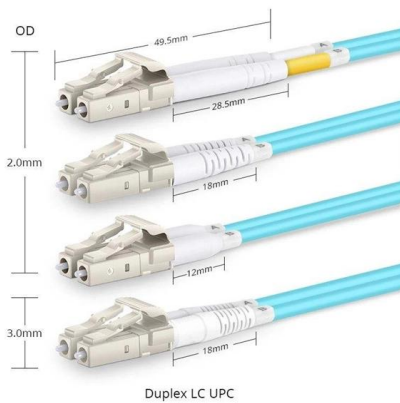
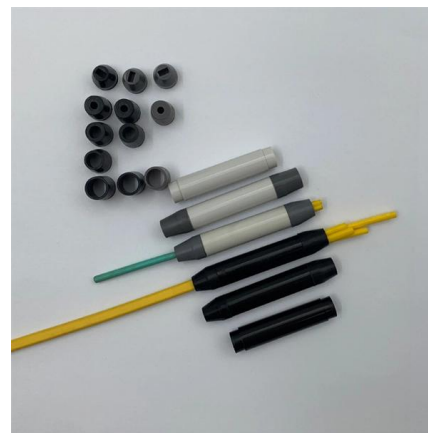
Tartu's smart city project that people can really relate to

According to the project's website, its goal is to make the city environment smart and sustainable, to inspire people to make environmentally conscious decisions and



MapIT® G2 Copper Patch Panels

The MapIT G2 Smart Patch Panel (SPP) is an industry first in intelligent infrastructure management. The panel features on-board intelligence and a combination of



(PDF) Retrofitting Soviet-Era Apartment Buildings with

This chapter describes the implementation of the Smart City concept to the renovation of a Soviet-era apartment buildings area, based on the example of the

Extending the Smart City Concept to Small-to-Medium Sized Estonian

Besides, the smart city concept involves digital transformation that will see the adoption of radical and disruptive technologies that are complex with no pre-defined processes [2, 8]. Hence, this study





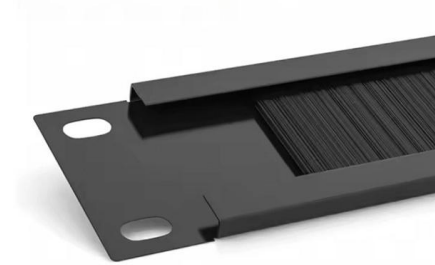
Extending the "Smart City" Concept to Small-to-Medium Sized Estonian

References (25) Abstract This study investigated smart city initiatives and challenges faced by small to medium sized municipalities.



ETL bro?üür 2023_2

We are an OEM and Smart City solutions manufacturer, that produces durable LED and LCD screens for intelligent traffic management systems. Our aim is to transform data into user-friendly visual



Intelligent Patch Panel Solution

EN 60950-1; EN 55032; EN 55035; EN 61000-3-2; EN 61000-3-3, ANSI C63.4 Infinique's Intelligent Patch Panel Solution for Copper and Fiber Structured Cabling System provides an automated and

Solutions for Smart City: What are the Biggest

Last summer, the FinEst Twins centre of excellence for smart cities asked 36 Estonian cities and rural municipalities about their challenges connected to the



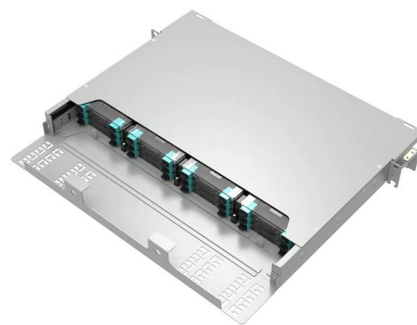
Artificial intelligence is part of the next chapter in

Estonia is already testing the use of Kratt to find the right answer from the legislation, to quickly guide a person lost in the state systems on the right



Smart Building: Tartu, Estonia - EBRD

The city's smart building initiative is still a small-scale project and tangible results remain to be seen. In the long run, it aims to reduce energy consumption in the



Energy Security: Operational Highlights

More clean energy means more solar panels, wind turbines, electric vehicles and large-scale batteries. At the same time it means more demand for the materials that make those technologies possible.





Cat 6A Utp Intelligent Tool Less Patch Panel

Norden Intelligent Cat.6A patch panel provides capabilities of registering patch connections made between corresponding intelligent panel ports. It is Capable of registering patch connections between



Smart City Tallinn: City Portrait

Smart Urban Estonia: Green and full of opportunities In 2020, Tallinn was voted Intelligent Community of the Year by the Intelligent Community Forum.

Contact Us

For datasheets, pricing, or custom telecom energy solutions, please visit:
<https://www.koskolong.co.za>