



Adam Tas Corridor Energy

Explosion-proof distribution box and explosion-proof connector





Explosion-proof distribution box and explosion-proof connector

Explosion Proof Distribution Boxes

Explosion proof distribution box components for use in hazardous areas - Zone 1 and 2; Zone 21 and 22.



Explosion proof Power Distribution Panel Box

Power Distribution panel box - Hazardous locations for explosive gas mixtures: Zone 1 and Zone 2. Explosive gas mixtures: Class IIA, IIB, and IIC.



Explosion-Proof Distribution Boxes & Panels Manufacturer

The explosion-proof distribution box safely delivers power in hazardous zones (oil, gas, chemical plants) with rugged, spark-resistant casing--ATEX/IECEX, IP66 certified for reliable operation in explosive



Explosion Proof Power Distribution Boxes

Flameproof and explosion proof, these power overhaul distribution boxes are suitable for use



in hazardous areas. Specs: Ex mark: Ex de IIC T4
Gb DIP A21 TA,T4



6WAY EXPLOSION PROOF DISTRIBUTION BOXES,

BESIDES THE PRESENT DESIGNATION FOR THE
FULL PLASTIC EXPLOSION-PROOF MOBILE POWER
BRANCH CONNECTION SOCKET BOX, IT ALSO



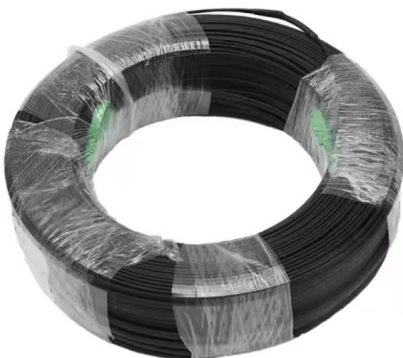
Explosion protective components & systems , Products , ABB

From its global facilities ABB manufactures a
wide range of ATEX, IECEX, UL, CSA approved
electrical products for hazardous area
applications. These include cable glands and
lighting ranges.



Terminal Box/Explosion proof electrical equipment/global certification

Terminal Box KHJ offers a large selection of
terminal boxes and junction boxes for wiring
connection in explosion hazardous areas. They
are certified according to the latest ATEX and IEC
EX standards.





Explosion Proof Enclosures

Ex-Proof & Flameproof Junction Boxes & Enclosures Supermec ATEX Junction Box & Enclosures are designed to satisfy most of our clients' requirements for CONTROL explosion-proof and flameproof



Ex-Proof & Flameproof Enclosures & Junction Box , Supermec

Supermec ATEX Junction Box & Enclosures are designed to satisfy most of our clients' requirements for CONTROL explosion-proof and flameproof enclosures.

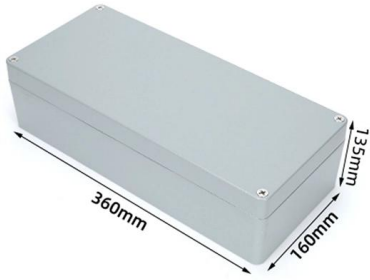
Ex-Proof & Flameproof Enclosures & Junction Box , Supermec

Ex-Proof & Flameproof Junction Boxes & Enclosures Supermec ATEX Junction Box & Enclosures are designed to satisfy most of our clients' requirements for CONTROL explosion-proof and flameproof



Explosion-Proof Distribution Box , Product Center

Explosion-proof distribution boxes are designed to safely control and distribute electrical power in hazardous environments, preventing ignition risks.



BM (D)X-Series Explosion Protected Distribution Box

BM (D)X-Series Explosion Protected Distribution Box Explosion protection -IECEX (IEC) -ATEX (CENELEC,EN) -China Ex (GB) Application in hazardous area



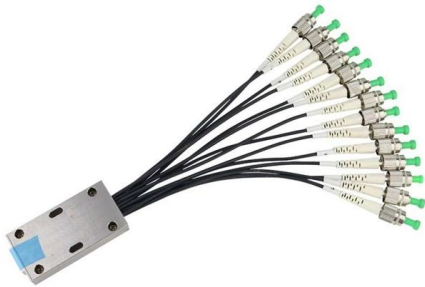
Terminal Box/Explosion proof electrical equipment/global certification

KHJ offers a large selection of terminal boxes and junction boxes for wiring connection in explosion hazardous areas. They are certified according to the latest ATEX and IEC EX standards. Types of

Terminal and Junction Boxes , Explosion Protection

Terminal and Junction Boxes Terminal boxes and junction boxes from Pepperl+Fuchs are designed to protect signal and power distribution networks in explosion-hazardous and challenging environments.





Explosion proof Distribution Boxes HLDP03-M Malaysia

Explosion proof Distribution Boxes HLDP03-M Malaysia Zone 1 and Zone 2 Zone 21 and Zone 22 Meet the necessities in the following industries, such as petroleum,

Ex Isolation Switch/Safety Switch/Circuit Breaker Manufacturers

CZ Electric Co., Ltd is an Explosion-proof isolation switch manufacturers and Explosion-proof safety switch, Explosion-proof circuit breaker (MCB) box factory.

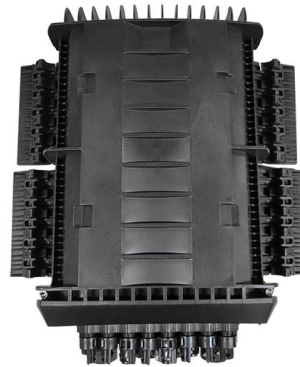


Ex-Junction boxes and terminal enclosures ATEX

Stainless steel Ex terminal boxes - HARDO
Stainless steel Ex terminal boxes of the Polish company HARDO, are available at a competitive price and workmanship

Distribution Boxes

Distribution Boxes BXM (D)8061 Explosion proof
Distribution Boxes Lighting or Power (Ex db ec
IIC)



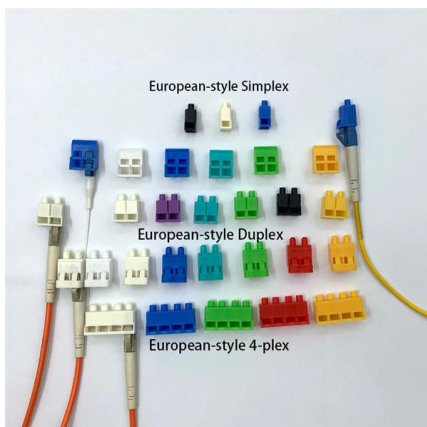
Ex Junction Boxes and ATEX Enclosures · ATEX Delvalle

Our explosion protection Ex enclosures and equipment are comprehensive and widely configurable. Reliable in use and convenient to install, their overall quality



ATEX Certified Junction Boxes, Terminals, Sockets

These explosion proof junction boxes / terminal boxes, plugs, sockets & connectors are for use in explosive atmospheres in compliance with the ATEX 94/9/EC



Top 3 Facts About Explosion Proof Distribution Box & Electrical

Explosion proof distribution boxes and electrical enclosures are critical components for ensuring safety in hazardous environments. They are designed to contain internal explosions and



Explosion Proof Enclosures , Complete Hazardous Area

Learn everything about explosion proof enclosures for hazardous areas--design, certification, and industrial applications with ATEX, IECEx, and Class I Div

Wall Mount Cabinet Server Racks



GRP Ex Terminal Boxes

HTB1P terminal boxes, made of glass fibre reinforced polyester (GRP), are designed for use in explosive atmospheres: Zones 1, 2 (gases) and 21, 22 (dusts). They



Terminal boxes , Junction boxes , Ex , Ex e , Ex d , ATEX , Explosion

Safely conduct, connect and distribute energy in hazardous areas with R. STAHL's terminal boxes. We offer bespoke, custom-made terminal boxes and terminal box combinations, as well as standard



Explosion Proof Junction Box Types, Prices

Explosion-Proof Junction Boxes: Pricing, Sizes & Installation Guide In hazardous locations where flammable gases, vapors, or dust are present,



Custom CZ1290 Explosion-proof distribution boxes

About CZ CZ Electric Co., Ltd was established in 1990, is a CZ1290 Explosion-proof distribution boxes (mobile power branch connection socket box) suppliers, and



Contact Us

For datasheets, pricing, or custom telecom energy solutions, please visit:
<https://www.koskolong.co.za>