



**Adam Tas Corridor Energy**

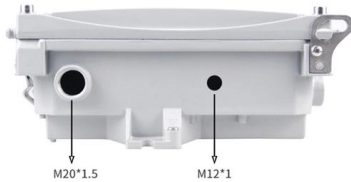
# **Explosion-proof distribution box partition head**





## Explosion-proof distribution box partition head

---



### Explosion Proof Power Distribution Boxes

Flameproof and explosion proof, these power overhaul distribution boxes are suitable for use in hazardous areas. Specs: Ex mark: Ex de IIC T4 Gb DIP A21 TA,T4

### Ex-Proof & Flameproof Enclosures & Junction Box , Supermec

Supermec ATEX-approved Junction Box & Explosion Proof, Flameproof Enclosures are designed to satisfy your requirements. Manufactured using the latest technologies.



### Flameproof Distribution Board , Explosion proof

An ordinary distribution board may generate heat and sparks due to heavy usage. Thus, the flameproof/explosion-proof distribution box/panel is used in hazardous

## DISTRIBUTION BOARDS

These are available in a range of materials including Stainless Steel, GRP & Sheet Steel from IP42 (Indoor) to IP 66 (Outdoor) Applications.



### SA POWERNET EX Splitter Box - ATEX Certified

Introducing the SA POWERNET EX Splitter Box, an ATEX, IECEx, and UKEX certified power distribution solution designed for hazardous environments. This



### Tailored explosion-proof panel boards , Cortem S.p.A.

They are suitable for indoor or outdoor installation in chemical, petrochemical, refining plants and in any other industrial process with a potentially explosive atmosphere due to the presence of gas, vapors

4-port 8-core LC wall-mounted fiber terminal box (empty frame)

Surface painted      Scientific plate fiber      Cold-rolled steel plate



Lifetime quality assurance

Free shipping

Customizable for telecommunications



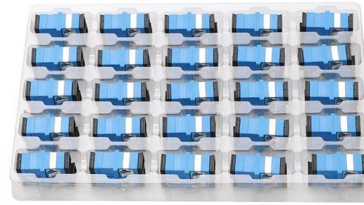
### How to Wire an Explosion-Proof Distribution Box and

Explosion-proof electrical equipment, such as explosion-proof distribution boxes, is specifically designed for hazardous environments where flammable gases,



## 5 Key Factors to Consider When Selecting Explosion Proof Distribution Boxes

Selecting explosion-proof distribution boxes protects the safety of your staff in any potentially hazardous workplace. HEXLON stands out as a trusted provider of explosion-proof



## Explosion proof distribution box standards and installation issues

I. Explosion-proof distribution box general standards Distribution box production technology indicators to meet the specifications and design requirements, and in accordance with the provisions of the

## Explosion-proof and flame-retardant distribution box

The present invention relates to an explosion-proof and flame-retardant distribution box, comprising an electric box main body. The electric box main body comprises an upper cavity and a lower cavity, a



## Explosion Proof Distribution Box & Electrical Enclosures

Durable Hexlon Explosion Proof Distribution Boxes and Electrical Enclosures, IECEx and ATEX certified for Zone 1 and Zone 2.



### Explosion-proof distribution box: the "invisible guard" protecting

Ordinary distribution boxes may become a safety hazard in high temperature, corrosive or flammable environments. The explosion-proof distribution box uses explosion-proof, anti



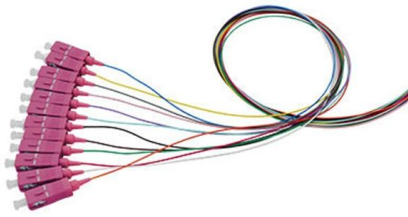
### Energy Distribution

BARTEC offers one of the most extensive ranges of explosion-proof and substance-resistant components, devices, and systems for controlling, switching, and

### Distribution Boxes

Distribution Boxes BXM (D)8061 Explosion proof  
Distribution Boxes Lighting or Power (Ex db ec  
IIC)





## Explosion-proof Distribution Box

China Explosion-proof Distribution Box catalog of Anti-Corrosion Electrical Control Box 6 Holes Aluminum The Explosion-Proof Distribution Box Power Instrument Box Industry Water, Exd lic

## Distribution box solutions for explosion-proof environments in

At the Magnus platform, stainless steel distribution boxes weren't just protecting against explosions - they were combatting constant saltwater corrosion. Engineers specified special low-nickel alloys to

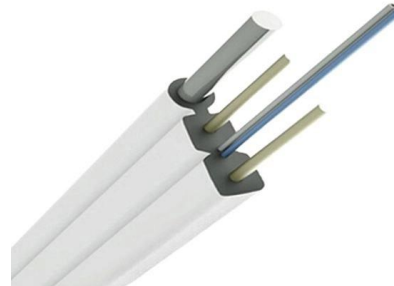


## Explosion Proof Power Distribution Boxes CE92

Flameproof and explosion proof, these power overhaul distribution boxes are suitable for use in hazardous areas. Specs: Ex mark: Ex de IIC T4 Gb DIP A21 TA, T4

## Explosion-proof Distribution Box

China Explosion-proof Distribution Box catalog of Exd Explosion Prevention Exe Aluminum Alloy Junction Box Explosion-Proof Threading Straight Box Ex Seal Wire Box, Explosion-Proof Type a



### **Explosion proof Enclosures and Distribution Boxes**

For more information on our range of explosion proof enclosures and distribution boxes please click on the links above or contact us at [ex@warom.ae](mailto:ex@warom.ae)



### **Ex Local Control Stations & Distribution Boxes**

Atex control stations, explosion protected control units and distribution boxes made stainless steel maritime grade AISI 316L or AISI 304L. Atex Delvalle provides a



### **Control and Distribution Panels , Ex d , EJB Series**

The enclosure series EJB forms the optimal basis for the application-specific configuration of terminal boxes, control stations as well as control and distribution





## **BXM (D)8050 Explosion proof Distribution Boxes**

Warom Explosion proof Distribution Boxes. Modular GRP construction fitted with a variety of optional components..



## **Power Distribution Systems , Explosion Protected , R. STAHL**

R. STAHL's technology provides explosion protection of the breaker itself. This clever design reduces the need for heavy cast metal enclosures and conduit seals. It minimizes safety risks caused by

## **HRMD91 Explosion proof Distribution Box (Ex d IIB+H2)**

HRMD91 Explosion proof Distribution Box  
Explosion protection to - IEC - CENELEC - NEC  
Can be used in Zone 1 and Zone 2 Zone 21 and Zone 22 Class I, Zone 1



## **Control and Distribution Panels , Ex d , EJB Series**

The enclosures are certified Ex d IIB+H2 and Ex tb as well as "explosion-proof". They are available in many sizes, a wide range of operating elements and



## Contact Us

---

For datasheets, pricing, or custom telecom energy solutions, please visit:  
<https://www.koskolong.co.za>