



**Adam Tas Corridor Energy**

# **Explosion-proof distribution box power distribution diagram**





## Explosion-proof distribution box power distribution diagram

---

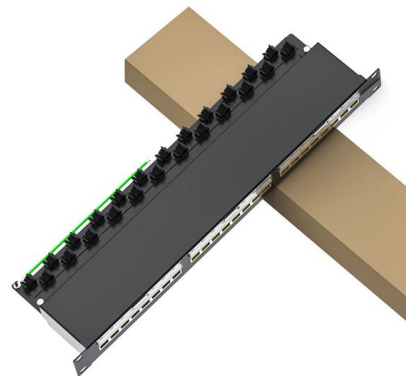


### Explosion Proof Power Distribution Boxes CE92

Flameproof and explosion proof, these power overhaul distribution boxes are suitable for use in hazardous areas. Specs: Ex mark: Ex de IIC T4 Gb DIP A21 TA, T4

### Explosion-Proof Distribution Box Market Size and Forecast 2035

Explosion-Proof Distribution Box Market Segmentations By Application Industrial Applications: Explosion-proof distribution boxes are widely used in industrial settings like oil refineries, chemical



### explosion-proof distribution box bx51 electrical

BX51 Explosion-Proof Distribution Box delivers safe power control and distribution in explosive-prone environments.



### Explosion proof Lighting Power Distribution Box

Explosion proof Lighting Power Distribution Box, products shock-resistant and durable, energy-



saving and environmentally friendly, models and styles are



### **Explosion Proof Distribution Box & Electrical Enclosures**

Durable Hexlon Explosion Proof Distribution Boxes and Electrical Enclosures, IECEx and ATEX certified for Zone 1 and Zone 2.



### **Explosion proof Power Distribution Panel Box**

Power Distribution panel box - Hazardous locations for explosive gas mixtures: Zone 1 and Zone 2. Explosive gas mixtures: Class IIA, IIB, and IIC.



### **FACTORY SEALED POWER DISTRIBUTION & CONTROL**

Applications: For hazardous classified locations due to explosive gas and/or dust atmospheres. Petroleum refineries, oil sands, chemical and petrochemical facilities with indoor or outdoor





## Internal Wiring Diagram of Explosion-Proof Distribution Box

Customers often inquire about the internal wiring of explosion-proof distribution boxes. Today, the team at Explosion-proof Electrical Equipment

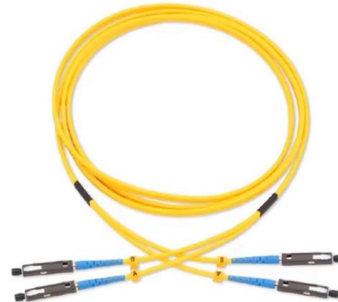


## Explosion-Proof Electrical Distribution Boxes: Applications in

An explosion-proof distribution box is a specialized enclosure designed to contain internal explosions and prevent the escape of flames, sparks, or hot gases. It is essential to note that these boxes are

## Explosion Proof Enclosures

Ex-Proof & Flameproof Junction Boxes & Enclosures Supermec ATEX Junction Box & Enclosures are designed to satisfy most of our clients' requirements for CONTROL explosion-proof and flameproof



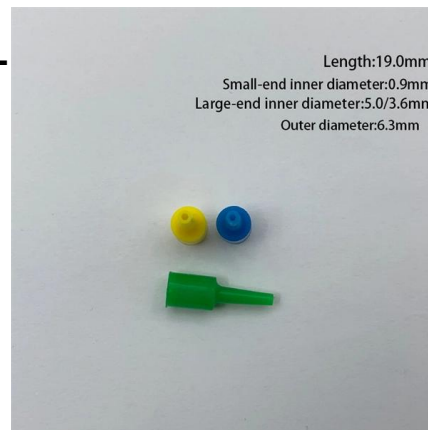
## How to Wire an Explosion-Proof Distribution Box and

Proper installation, wiring, and usage are critical to ensuring the safety and functionality of these systems. Below, we will discuss the correct wiring methods



### Model and Specification of Explosion-Proof Distribution Box

Explosion-proof lighting distribution boxes and cabinets come in a variety of models. They vary in terms of materials, including metal and flame-retardant plastic; installation methods, such as



### Distribution Boxes and Empty Enclosures

Distribution Boxes BXM51 Series Explosion-proof Illumination Distribution Boxes (Ex de IIB)  
 Technical data

### Explosion-Proof Lights, Explosion-Proof Junction Box,

Explosion-Proof Distribution Box Explosion-proof distribution boxes are designed to safely control and distribute electrical power in hazardous environments,





## Wiring Diagram of 1p, 1p+n, 2p in Explosion-Proof Distribution Box

Wiring in explosion-proof distribution boxes during installation and maintenance is a common task, particularly when extending connection lines.

## Distribution Boxes HRMD92 Series Explosion-proof Distribution Panels

Equipped with specialized hinge structure, which can prevent the flameproof joints from damage when opening and closing the panels, and greatly prolong the service life of box. The boxes can be



## Explosion-proof and flame-retardant distribution box

The present invention relates to an explosion-proof and flame-retardant distribution box, comprising an electric box main body.

## Flameproof Distribution Board , Explosion proof

Thus, the flameproof/explosion-proof distribution box/panel is used in hazardous areas (flammable gases) to prevent this spark from triggering an explosion in the



## How to Wire an Explosion-Proof Distribution Box and

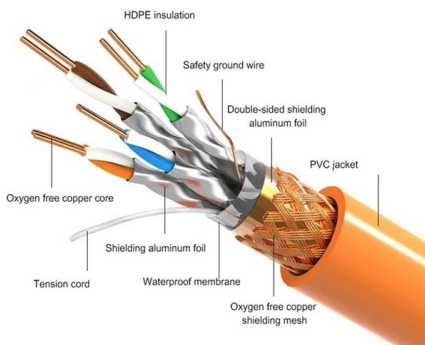
Explosion-proof electrical equipment, such as explosion-proof distribution boxes, is specifically designed for hazardous environments where flammable gases,

## Explosion proof distribution box standards and installation issues

Explosion-proof distribution boxes are mainly used in coal mines, fire stations, petroleum, petrochemical installations and textile and other flammable and explosive places. These places are more prone to



### PRODUCT DETAILS



## Energy Distribution

BARTEC's Ex zone 1 Power Handling Systems are designed for extended maintenance and remote operated installations. They include fully modular low-



## Explosion-Proof Distribution Boxes & Panels Manufacturer

The explosion-proof distribution box safely delivers power in hazardous zones (oil, gas, chemical plants) with rugged, spark-resistant casing--ATEX/IECEX, IP66 certified for reliable operation in explosive



## Distribution Boxes and Empty Enclosures

Boxes and Empty Enclosures Distribution Boxes  
BXM(D)S1 Series Explosion-proof Illumination  
(Power) Distribution Boxes (Ex de liB)

## Control and Distribution Panels , Ex d , EJB Series

The enclosure series EJB forms the optimal basis for the application-specific configuration of terminal boxes, control stations as well as control and distribution



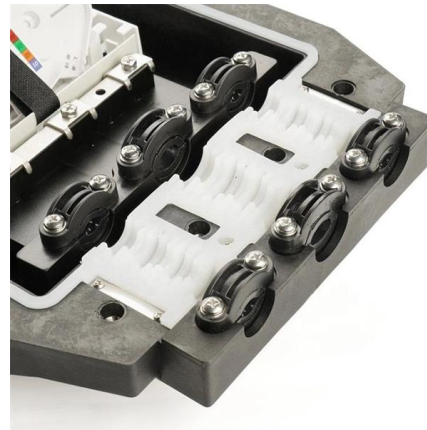
## BM (D)X-Series Explosion Protected Distribution Box

This product is combined with flame-proof cavity and an increased safety cavity, the branch switch and the main switch are operated by the operating handle on the



## Power Distribution Box Essentials: Functions, Types

Both ordinary distribution and ex-proof distribution power boxes serve the same purpose of safe power distribution, but each is suitable for different



## Power Distribution Systems , Explosion Protected , R. STAHL

When designing power distribution panels for lighting systems, heat tracing, or overall machinery, there is more than one option to choose from. If installing in a Class I, II Division 2 or Zone 1 for USA or

## Power Distribution Systems , Explosion Protected , R. STAHL

Evolution in Power Distribution For decades, the only explosion protection technology available in North America was the cast metal enclosure systems designed for Class I, Division 1 environments, also





## Explosion

Can be customized according to user requirements, meet the certificate use restrictions. The number of elements and the maximum number of holes size needs to meet the requirements of power

## Contact Us

---

For datasheets, pricing, or custom telecom energy solutions, please visit:  
<https://www.koskolong.co.za>