



Adam Tas Corridor Energy

Exposed electrical distribution box at the entrance





Exposed electrical distribution box at the entrance



Electrical Rooms Part 2

The wording for the warning sign outside of spaces with over 1,000 volts is much stronger because of the potential exposure to high-voltage electrical

Inspecting the Main Electrical Panelboard During a

Learn how to inspect the electric service panelboard and common electrical components in this inspection article provided by InterNACHI®.



How to Address Exposed Wires Outside of an Electrical Box

On top of that, a lot of electrical work has to be done by a certified expert, so if you're not familiar with this type of work, then call an electrician. With all of that said, whether you or a

Installation requirements for distribution boxes

Distribution boxes shall be made of non-combustible materials; open distribution boards



may be installed in production places and offices with low electric shock risk; enclosed cabinets shall



Outdoor Electrical Junction Box: Types & NEC Code Requirements 2025

Learn what an outdoor electrical junction box is, NEC 314 requirements, types like pull boxes and splice boxes, proper sizing rules, and when you need weatherproof protection.

What is an Electrical Distribution Box? A

What is an Electrical Distribution Box? At its core, an electrical distribution box (or distribution board) is a metal or plastic enclosure that houses



Power Distribution Boxes Explained Simply

Learn what a power distribution box is, how it works, key components, types, and why it's vital for safe and efficient electrical systems.





NEC Requirements for Panelboards and Load Centers

The National Electrical Code (NEC) provides comprehensive safety standards for electrical installations, including requirements for electrical panels (main service



The installation requirements for the distribution box

Learn how to install a distribution box safely and correctly. Covers wiring, placement, standards, and expert tips for a compliant setup.



Inspecting the Main Electrical Panelboard During a

When run underground from the utility pole to the electric meter, service conductors are installed in a buried conduit or run as the underground service-entrance



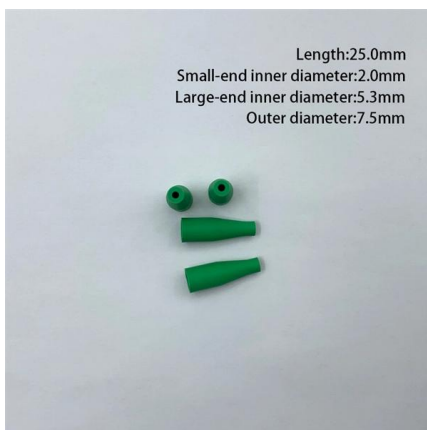
Basics in low voltage distribution equipment

Panelboards, switchboards and switchgear can all be used as service entrance electrical distribution equipment or at a point downstream, in which case it is known simply as power distribution equipment.



Cable Entrance Boxes For Power Distribution, MSCE

This galvanized cable entry box, MSCE, covers a partial depth of the enclosure. It has been tested according to IEC 61439, complies with form 4, and is available off the shelf.



JLC Field Guide: Main Service

The main disconnect is housed either in the distribution panel (below) or in its own separate box. This depends in part on the location of the distribution

Electrical Service Entry Wire SEC Size & Defects

Electrical service entry wiring, service entry cabling (SEC), & the electrical meter: how to inspect for & report service ampacity, service entry defects & hazards. Carson Dunlop Associates' sketch at page



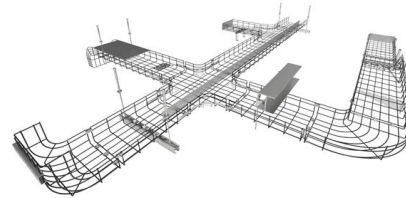


What Are the Electrical Code Requirements for Exterior Outlets?

Installing an exterior electrical outlet requires strict adherence to safety standards. These guidelines, primarily established by the National Electrical Code (NEC), are standardized regulations

A Step-by-Step Guide to Wiring an Electrical Panel Box

Find out how to properly wire an electrical panel box with a comprehensive diagram and step-by-step instructions.



Panelboards and Distribution Panels: What They Are

Introduction Navigating the world of electrical distribution can be confusing, with terms like panelboard, switchboard, and distribution box often

Distribution Box Installation: A Complete Guide to Safe

The distribution box, often referred to as a breaker box, fuse box, or electrical panel, is a critical component of any electrical system. It acts as the central hub for



1926.403

Cooling. Electrical equipment which depends upon the natural circulation of air and convection principles for cooling of exposed surfaces shall be installed so that room air flow over such surfaces is not



Safe Clearances for Electrical Equipment: Working

Front clearance: There should be a minimum of 3 feet of clearance at the front of all electrical equipment, including panelboards, switches, breakers, starters,



29 CFR Part 1926 Subpart K

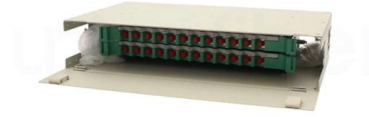
If exposed to contact with electric light or power conductors, the metal sheath of aerial cables entering buildings shall be grounded or shall be interrupted close to the entrance to the building by an





Complete Guide For Distribution Boxes Types

Distribution boxes, also known as electrical distribution boards or panels, are pivotal components in electrical systems, ensuring the safe and organized distribution of



The Complete Guide to Distribution Box: Installation, Types & More

Blog The Complete Guide to Distribution Box: Installation, Types & More By Admin Aug 2, 2025
No Comments # distribution box Introduction
Electrical systems power our homes, offices, and

How to Choose a House Distribution Box , CHINT global

A well-chosen distribution box ensures the safety and efficiency of your household electrical system. This article guides you through selecting a



Understanding Distribution Boxes: A Comprehensive Guide

A distribution box is a vital piece of equipment that ensures the effective and safe distribution of electrical power in various parts within a building



Electrical Panels: Replacement Signs, Maintenance,

The electrical panel--also called a circuit breaker box or service panel--is the central distribution point that connects the primary outside wire to



1926.403

The entrances to all buildings, rooms or enclosures containing exposed live parts or exposed conductors operating at over 600 volts, nominal, shall be kept locked or shall be under the observation of a

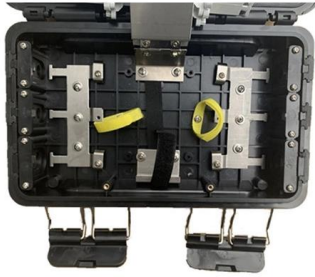
Outdoor Electrical Distribution Box Specifications: NEC

Complete specification guide for outdoor electrical distribution boxes covering NEC Article 312 requirements, NEMA ratings, sizing calculations, and



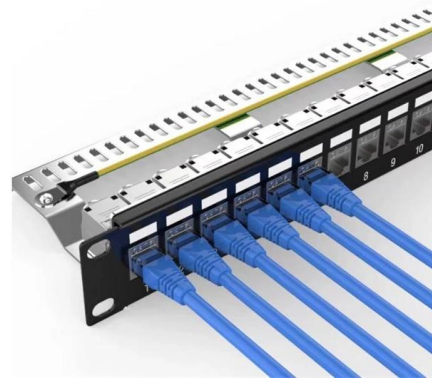
12 Types of Electrical Boxes and How to Choose

Learn about the many common types of wall and ceiling electrical boxes for switches, outlets, light fixtures, ceiling fans, and junction boxes.



Exposed Electrical Wiring: Code and Practices

Learn about exposed electrical wiring, such as NM or Romex, and whether it is allowed by code. Find out if exposed wiring is allowed in your home.



Contact Us

For datasheets, pricing, or custom telecom energy solutions, please visit:
<https://www.koskolong.co.za>